



A000583941

OFFICE OF THE COUNTY RECORDER
CASS COUNTY, MINNESOTA
CERTIFIED, FILED, AND/OR
RECORDED ON

9/10/2012 9:08:40 AM

AS DOC #: A000583941

PAGES: 2

REC FEES: 0.00

KATHRYN M. NORBY
CASS COUNTY RECORDER

BY SR Dep

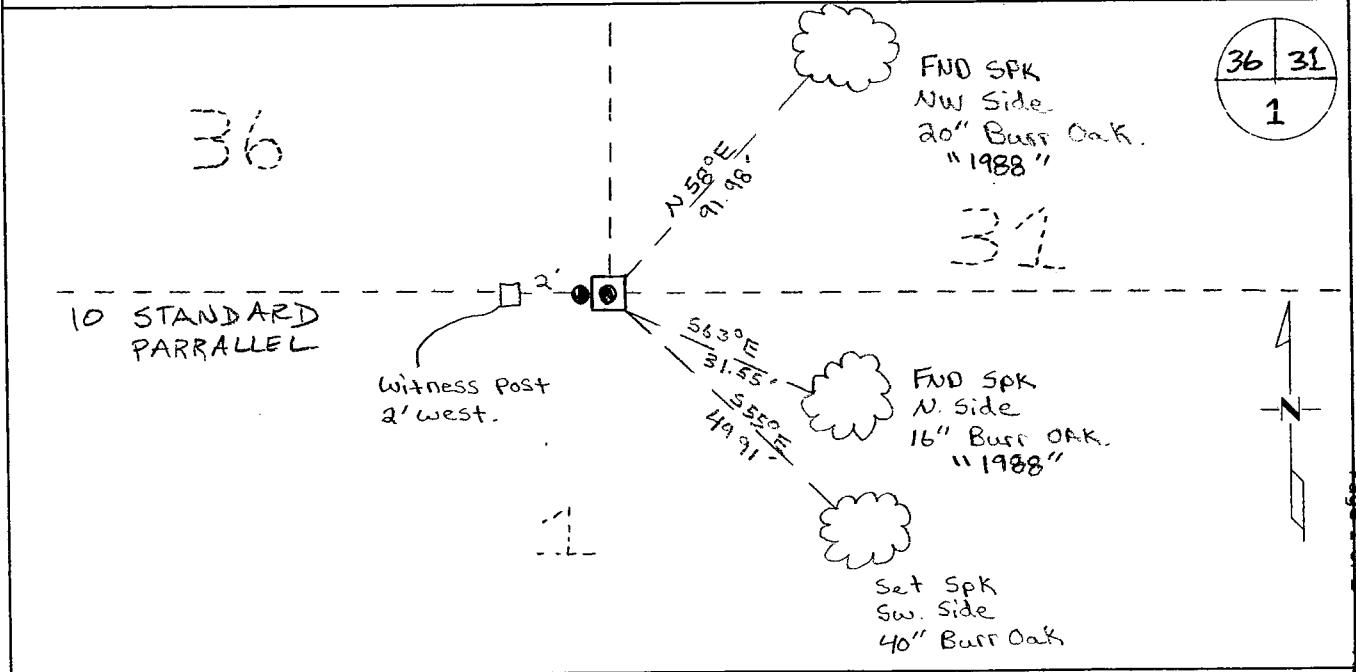
Index Number 7.0-25.0

CERTIFICATE OF LOCATION OF GOVERNMENT CORNER

Southeast Standard Corner of Section 36, Township 141, Range 31
5TH Principal Meridian, State of Minnesota, County of Cass

At the corner location shown on the sketch:

- On 4-20-11 found a 6x6 con monument w/ brass cap.
(Flush) 2" with plumbers cap on west side.
- left monument as found lowered monument removed monument (explain)
- On _____ placed on _____



Statement of evidence for this corner location is on back of this page.

I hereby certify that this document was researched and prepared by me or under my direct supervision and that I am a licensed Land Surveyor under the laws of the State of Minnesota.

Signature Chris Hoglund
Chris Hoglund, PS
License No. 43932

Date: 7/19/12

Page 1 of 2 A000583941



