



A000583928

OFFICE OF THE COUNTY RECORDER
CASS COUNTY, MINNESOTA
CERTIFIED, FILED, AND/OR
RECORDED ON

9/7/2012 3:03:11 PM

AS DOC #: A000583928

PAGES: 2

REC FEES: 0.00

KATHRYN M. NORBY
CASS COUNTY RECORDER

BY SR _____ Dep

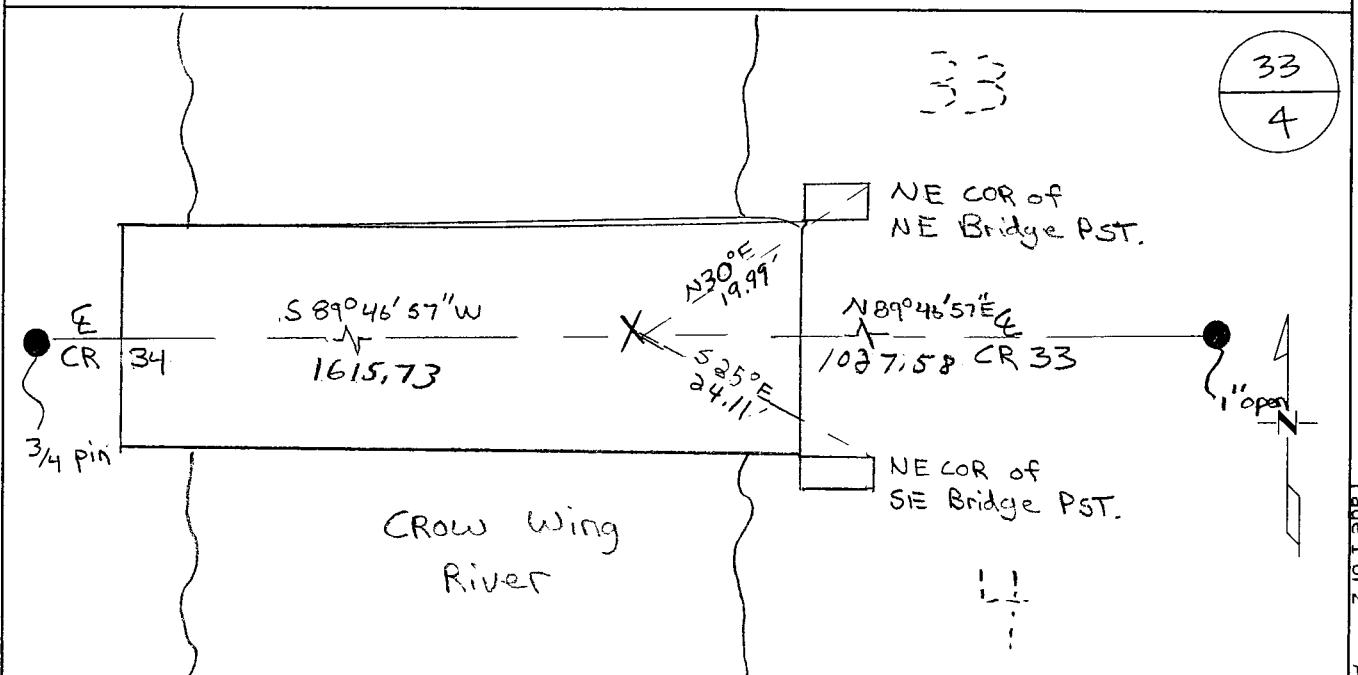
Index Number A-10.2

CERTIFICATE OF LOCATION OF GOVERNMENT CORNER

MC #2 on North Line Corner of Section 4, Township 133, Range 32
5TH Principal Meridian, State of Minnesota, County of Cass

At the corner location shown on the sketch:

- On _____ found a _____
- left monument as found lowered monument removed monument (explain)
- On 3-10-11 placed on cut an X in bridge deck
with angle grinder



Statement of evidence for this corner location is on back of this page.

I hereby certify that this document was researched and prepared by me or under my direct supervision and that I am a licensed Land Surveyor under the laws of the State of Minnesota.

Signature Chris Hoglund
Chris Hoglund, PS
License No. 43932

Date: 6/13/12





Statement of Evidence:

Meander Corner #2 on the North line of Section 4, Township 133 North, Range 32 West, Becker Township, 5th Principal Meridian, Cass County, Minnesota.

1858 Original US General Land Office survey by Harvey Mellen, set a wood post and bearing trees noted as:

9" W. Ash	N 71° E	30 links
12" W. Ash	S 53° E	60 links

1985 Certificate of Survey by Roy Smith, LS 12004 shows a direction for the north line of Section 4, but no monument was found or set for the meander corner, filed in the office of the Cass County Surveyor.

2004 Survey prepared by Kevin Festler, LS 22702, shows a direction for the north line of Section 4, but no monument was found or set for the meander corner, filed in the office of the Cass County Surveyor.

2011 Westwood Professional Services, Inc. made a chiseled "X" in the Bridge deck (location falls in the Crow Wing River) at a proportioned distance of 1027.58 feet West of the North Quarter, compared to a GLO distance of 1026.3, online between the North Quarter and the Northwest Corner of Section 4. North quarter and northwest corner of Section 4 have been certified to by the Minnesota Department of Natural Resources, monuments and accessories were verified. Located set monument with a 20 minutes static GPS shot and verified coordinates with VRS GPS observation. This position is accepted as being the best available evidence for Meander Corner #2.

Cass County Coordinates South Zone obtained by static GPS (NAD 83, 1996 Adj)

N: 177512.25

E: 433329.61

Central State Plane

N: 827519.98

E: 2503312.48