



A000583923

OFFICE OF THE COUNTY RECORDER
CASS COUNTY, MINNESOTA
CERTIFIED, FILED, AND/OR
RECORDED ON

9/7/2012 3:03:06 PM

AS DOC #: A000583923

PAGES: 2

REC FEES: 0.00

KATHRYN M. NORBY
CASS COUNTY RECORDER
BY SR Dep

Index Number A-13

CERTIFICATE OF LOCATION OF GOVERNMENT CORNER

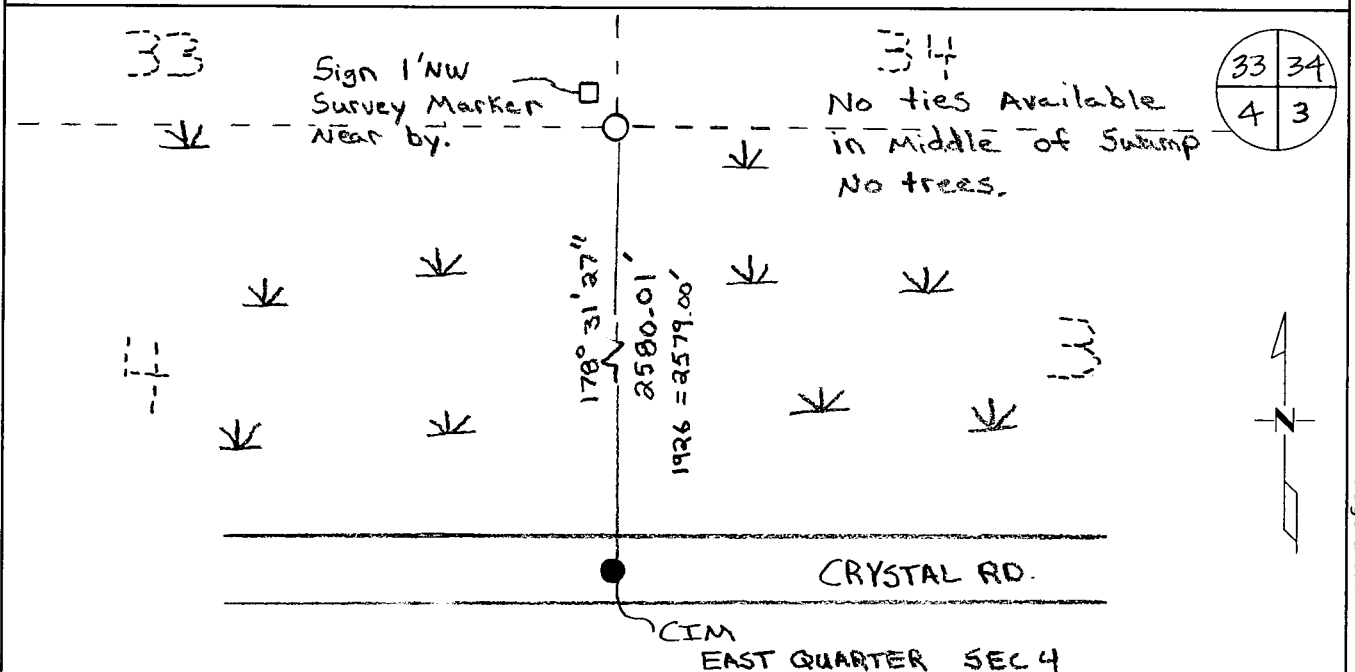
NORTH EAST Corner of Section 4, Township 133, Range 29
5TH Principal Meridian, State of Minnesota, County of Cass

At the corner location shown on the sketch:

On 2-17-11 found a 1" Square pipe

left monument as found lowered monument removed monument (explain)

On 2-17-11 placed on 3.5" Brass Cap Stamped CASS CTY
43932 over the top of existing 1in Solid.



Statement of evidence for this corner location is on back of this page.

I hereby certify that this document was researched and prepared by me or under my direct supervision and that I am a licensed Land Surveyor under the laws of the State of Minnesota.

Signature Chris Hoglund
Chris Hoglund, PS
License No. 43932

Date: 6/13/12





Statement of Evidence:

Northeast Corner of Section 4, Township 133 North, Range 29 West, Sylvan Township, 5th Principal Meridian, Cass County, Minnesota.

- 1858 Original US General Land Office survey by E.N. Darling, set a wood post and bearing trees noted as:
- | | | |
|-------------|-------------|------------|
| 6" Tamarack | S 89 1/2° E | 4.45 links |
| 6" Tamarack | N 86° E | 5.96 links |
- 1893 R.K. Whiteley found corner post and Original Bearing Tree. Filed in Book W-4, Page 31 at Crow Wing County Surveyor's Office.
- 1920 Babcock mentioned corner and original bearing trees, filed in Curo Book 155, Page 13.
- 1923 John Curo set Iron Monument from original bearing trees, filed in Curo Book 155, Page 86.
- 1926 Greene, Cass County Surveyor found pin for corner. Filed in Cass County Book "D" Page 175, Survey Record #544, Shows corner 2579 feet north of East Quarter of Section 4.
- 1981 R.C.M. found no evidence of Corner. They noted a fence west and east for occupation. Filed in Crow Wing County Book S105, Page 36.
- 1992 Landecker and Associates, Inc found a 1" square iron pipe from 1925 Minnesota Power and Light Survey, filed at the office of the Crow Wing County Surveyor.
- 1996 James Kramer, PS 23668, shows monument in place on certificate, on file at Crow Wing County Surveyor's Office.

No Date Coordinates furnished by Widseth Smith Nolting are:
 NAD 83, 1986 Adj.
 N: 177619.189
 E: 534980.284

2011 Westwood professional Services, Inc. found a 1" square iron pin as described by Greene in 1926, assumed to be set by Curo in 1923, at corner location. Corner falls in middle of sizable swamp. The E1/4 of Section 4 measured 2580.01 feet south which is in agreement with the 1926 Green distance of 2579 feet. Accepted found 1" square pin to be Green's from 1926 and as being a perpetuation of the original G.L.O corner by John Curo in 1923. Set 5/8"x24" rebar with 3.5" brass cap over existing monument. Located set monument with 20 minute static GPS shot and verified coordinates with VRS GPS observation. Analysis of the recovered data, field evidence and survey measurements, indicates that the monument found by Westwood Professional Services, Inc is the correct perpetuation of this corner.

Cass County Coordinates South Zone obtained by static GPS (NAD 83, 1996 Adj)
 N: 177619.20
 E: 534979.41

Central State Plane Coordinate:
 N: 827349.08
 E: 2604948.33