



A000583916

OFFICE OF THE COUNTY RECORDER
CASS COUNTY, MINNESOTA
CERTIFIED, FILED, AND/OR
RECORDED ON

9/7/2012 3:02:59 PM

AS DOC #: A000583916

PAGES: 2

REC FEES: 0.00

KATHRYN M. NORBY
CASS COUNTY RECORDER

BY SR Dep

Index Number Q-R-25

CERTIFICATE OF LOCATION OF GOVERNMENT CORNER

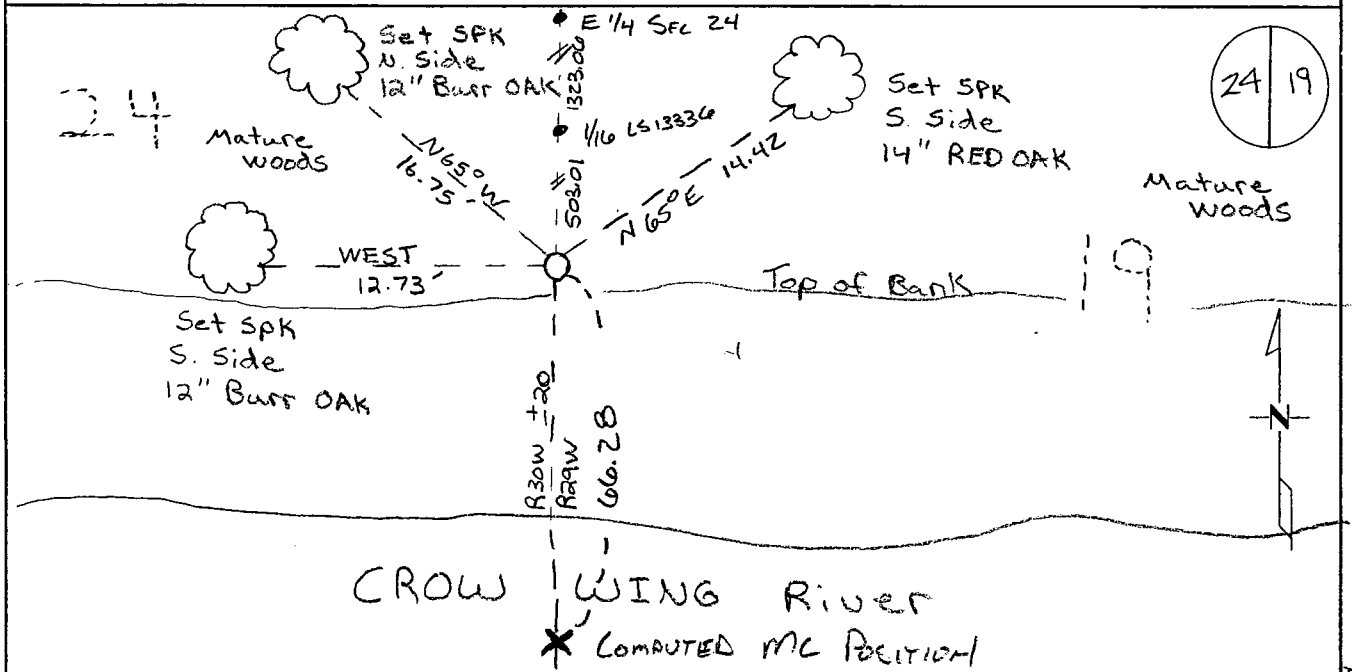
WITNESS CORNER TO

MC # 35 EAST LINE of Section 24, Township 133, Range 30

5TH Principal Meridian, State of Minnesota, County of Cass

At the corner location shown on the sketch:

- On _____ found a _____
- left monument as found lowered monument removed monument (explain)
- On 6-8-11 placed an 1/2" Iron pipe with cap
Stamped 43932. ON line with E 1/4 & 16th cor to south.



Statement of evidence for this corner location is on back of this page.

I hereby certify that this document was researched and prepared by me or under my direct supervision and that I am a licensed Land Surveyor under the laws of the State of Minnesota.

Signature *Chris Hoglund*
Chris Hoglund, PS
License No. 43932

Date: 6/13/12





Statement of Evidence:

Witness Corner to Meander Corner #35 on the East line of Section 24, Township 133 North, Range 30 West, Sylvan Township, 5th Principal Meridian, Cass County, Minnesota.

1858 Original US General Land Office survey by E.N. Darling, set a wood post and bearing trees noted as:

8" Black Oak	S 79 1/2° E	14 links
12" Ash	N 79 1/2° W	460 links

1912 John Curo found Old Gov't B.T.s: 12" Ash N79°30'W 303.60 feet; found stump of 8" Black Oak S79°30'E 9.24 feet. Set 3x3x36" oak stake and filed in County Survey Record Book "A" Page 434-443, Survey Record # 186. Referenced new ties:

5" Oak	N 2°02' W	29 feet
6" Oak	S 88°22' E	38.15 feet

1924 John Curo found corner in place, filed in Curo Book 24, Page 27.

1993 Widseth, Smith, Nolting did survey in Section 24 and set a 1/2" pipe capped LS 13336 at the 1/16th Corner south of the East Quarter of Section 24, filed in the Office of Widseth, Smith, Nolting in Baxter, MN.

2011 Westwood Professional Services, Inc. searched the area thoroughly for the corner and accessories, finding that the Crow Wing River had changed significantly since subsequent surveys were done, destroying all of the original evidence. Set a 1/2"x14" pipe capped L.S. 43932 for a witness corner on a line projected south 1826.00 feet as a witness corner to meander corner located 1892.35 feet (1912 Curo Distance) from the east quarter corner of Section 24 through an iron pipe set by Widseth, Smith Nolting at the south 1/16th corner on the east line of Section 24. Located set monument with a VRS GPS observation. Analysis of the record data and field evidence indicates that the monument set by Westwood Professional Services in 2011 is the best available evidence for a witness to Meander Corner #35.

(Witness Corner)

Cass County Coordinates South Zone obtained by VRS GPS (NAD 83, 1996 Adj)
 N: 157327.60
 E: 519241.63

(Meander Corner)

Cass County Coordinates South Zone (NAD 83, 1996 Adj)
 N: 157261.28
 E: 519242.78

Central State Plane Coordinate:

N: 807037.14
 E: 2589158.17