



A000583913

OFFICE OF THE COUNTY RECORDER
CASS COUNTY, MINNESOTA
CERTIFIED, FILED, AND/OR
RECORDED ON

9/7/2012 3:02:56 PM

AS DOC #: A000583913

PAGES: 2

REC FEES: 0.00

KATHRYN M. NORBY
CASS COUNTY RECORDER

BY SR Dep

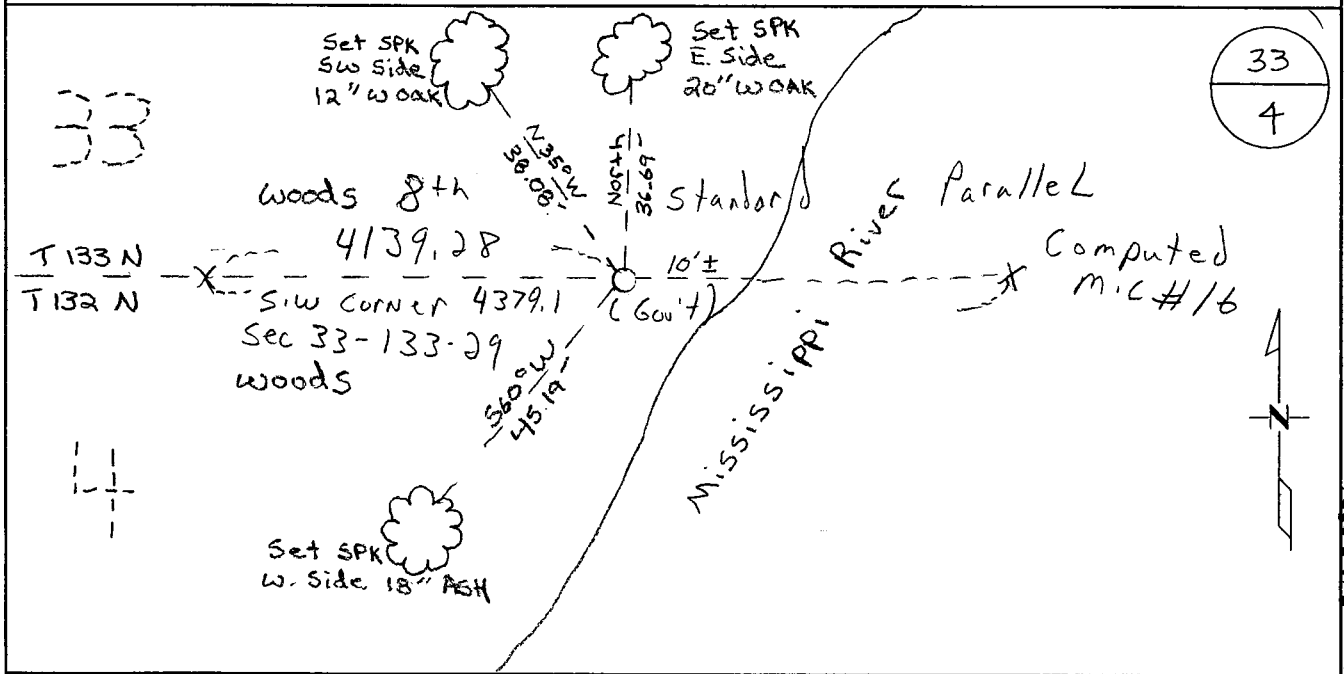
Index Number A-12-13

CERTIFICATE OF LOCATION OF GOVERNMENT CORNER

MC #16 North LINE Corner of Section 4, Township 132, Range 29
5TH Principal Meridian, State of Minnesota, County of Cass

At the corner location shown on the sketch:

- On _____ found a _____
- left monument as found lowered monument removed monument (explain)
- On 6-27-11 placed an 1/2" IP capped with RLS # 43932.

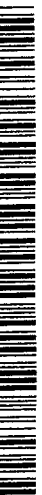


Statement of evidence for this corner location is on back of this page.

I hereby certify that this document was researched and prepared by me or under my direct supervision and that I am a licensed Land Surveyor under the laws of the State of Minnesota.

Signature Chris Hoglund
Chris Hoglund, PS
License No. 43932

Date: 6/13/12





Statement of Evidence:

Witness Corner to Meander Corner #16 on the north line of Section 4, Township 132 North, Range 29 West, Sylvan Township, 5th Principal Meridian, Cass County, Minnesota.

- 1859 Original US General Land Office survey by Oscar Taylor, set wood post.
- 1992 Comstock and Davis, Thomas P. Thiessen, LS 16097 Certificate of Survey shows monuments set on the south line of Section 33, filed in the office of Westwood Professional Services, Brainerd, MN.
- 1999 MN DNR Certificate of Survey shows south line of Section 33 based on Thiessen information, filed in the office of the Minnesota Department of Natural Resources, Brainerd, MN.
- 2011 Westwood Professional Services, Inc. searched the area thoroughly, but found no evidence of the original corner or accessories. Contacted the Minnesota Department of Natural Resources, Cass County Surveyor's Office, Anderson Engineering, B.L.M, Morrison County Recorder's Office and Festler Land Surveying for information, but no additional information was found. Found three ½" iron pipe capped L.S. 17253, Bruce Grivna, apparently set by Comstock and Davis while conducting the 1992 survey (both surveyors worked for Comstock), on the south line of Section 33. Used Government Distance of 4379.1 from the southwest corner of Section 33 based on 1992 Comstock and Davis monuments found on the south line of Section 33 to compute Meander Corner Position, set a ½" pipe capped L.S. 43932 as a witness corner to Meander Corner 15, since meander corner falls in the Mississippi River. Located set monument with VRS GPS observation. Analysis of the recovered data, field evidence and survey measurements, indicates that the monument set by Westwood Professional Services, Inc is the best available evidence for the witness corner for Meander Corner #16.

(Witness Corner – iron pipe capped 43932)
Cass County Coordinates South Zone obtained by VRS GPS (NAD 83, 1996 Adj)
N:145863.95
E: 534055.24

(Meander Corner – falls in Mississippi River)
Cass County Coordinates South Zone obtained by static GPS (NAD 83, 1996 Adj)
N:145854.25
E: 534294.76

(Meander Corner – falls in Mississippi River)
Central State Plane Coordinate
N: 795590.53
E: 2604176.74