



A000583911

OFFICE OF THE COUNTY RECORDER  
CASS COUNTY, MINNESOTA  
CERTIFIED, FILED, AND/OR  
RECORDED ON

9/7/2012 3:02:54 PM

AS DOC #: A000583911

PAGES: 2

REC FEES: 0.00

KATHRYN M. NORBY  
CASS COUNTY RECORDER

BY SR \_\_\_\_\_ Dep

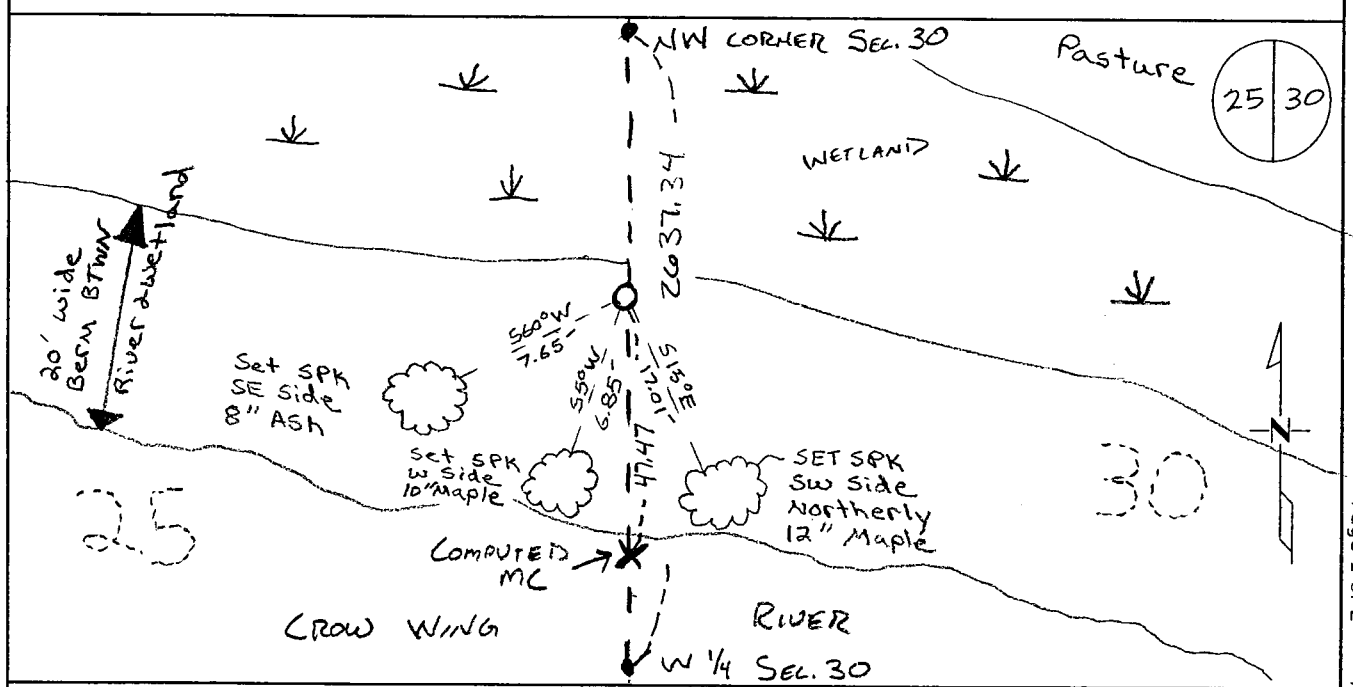
Index Number R.7-1

# CERTIFICATE OF LOCATION OF GOVERNMENT CORNER

WITNESS CORNER TO  
MC # 9 WEST LINE of Section 30, Township 134, Range 32  
5TH Principal Meridian, State of Minnesota, County of Cass

At the corner location shown on the sketch:

- On \_\_\_\_\_ found a \_\_\_\_\_
- left monument as found       lowered monument       removed monument (explain)
- On 6-26-11 placed on 1/2" Iron pipe with Cap # 43932.



Statement of evidence for this corner location is on back of this page.

I hereby certify that this document was researched and prepared by me or under my direct supervision and that I am a licensed Land Surveyor under the laws of the State of Minnesota.

Signature Chris Hoglund  
Chris Hoglund, PS  
License No. 43932

Date: 9/13/12

Page 1 of 2  
A000583911





**Statement of Evidence:**

Meander Corner #9 on the West line of Section 30, Township 134 North, Range 32 West, Becker Township, 5<sup>th</sup> Principal Meridian, Cass County, Minnesota.

1858 Original US General Land Office survey by Harvey Mellen, set a wood post and bearing trees noted as:

6" Elm	N 32° W	94 links
14" Oak	N 21° E	188 links

2011 Westwood Professional Services, Inc. searched thoroughly for the corner and any accessory evidence and found no evidence of either. Set a ½" pipe Capped L.S. 43932 as a witness corner to Meander Corner #9 online between the Northwest Corner of Section 30 and the West Quarter Corner of Section 30. The distance between the Northwest Quarter and the West Quarter Corner measured 2637.34 compared to a GLO distance of 2640.00. The meander corner position was computed at a proportioned distance of 994.28 feet from the Northwest Corner of Section 30, the witness corner was set a distance of 946.81 feet. Located set monument with a VRS GPS observation. Analysis of the record data and field evidence indicates that the monument set by Westwood Professional Services in 2011 is the best available evidence for a Witness corner to Meander Corner #9.

(Witness Corner)

Cass County Coordinates South Zone obtained by static GPS (NAD 83, 1996 Adj)  
N: 187113.64  
E: 421177.21

(Meander Corner)

Cass County Coordinates South Zone obtained by static GPS (NAD 83, 1996 Adj)  
N: 187066.17  
E: 421177.30

Central State Plane Coordinate:

N: 837105.66  
E: 2491187.90