



A000583794

OFFICE OF THE COUNTY RECORDER
CASS COUNTY, MINNESOTA
CERTIFIED, FILED, AND/OR
RECORDED ON

9/6/2012 9:10:01 AM

AS DOC #: A000583794

PAGES: 2

REC FEES: 0.00

KATHRYN M. NORBY
CASS COUNTY RECORDER
BY SR _____ Dep

Index Number A-9.4

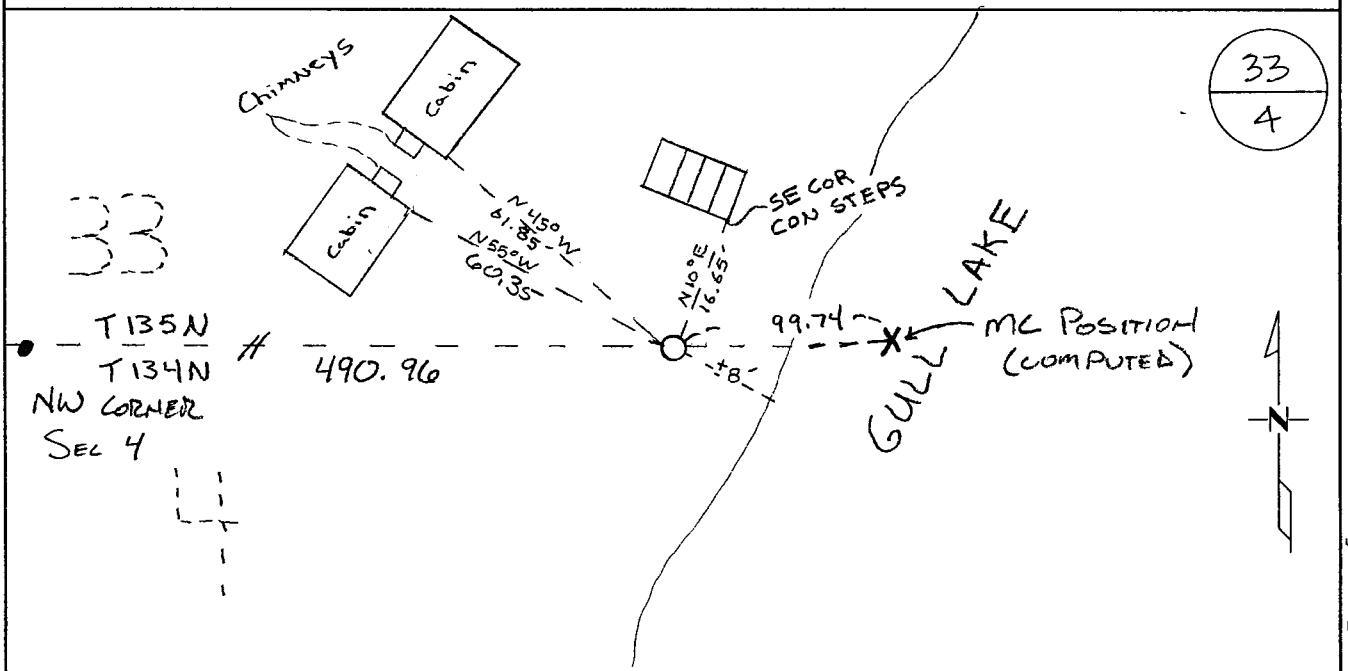
CERTIFICATE OF LOCATION OF GOVERNMENT CORNER

WITNESS CORNER TO

MC # 61 NORTH Line of Section 4, Township 134, Range 29
5TH Principal Meridian, State of Minnesota, County of Cass

At the corner location shown on the sketch:

- On _____ found a _____
- left monument as found lowered monument removed monument (explain)
- On 5-23-11 placed an 1/2" Iron Pipe with cap. Stamped 43932. 8'± to edge of Water "GULL LAKE".



Statement of evidence for this corner location is on back of this page.

I hereby certify that this document was researched and prepared by me or under my direct supervision and that I am a licensed Land Surveyor under the laws of the State of Minnesota.

Signature Chris Hoglund
Chris Hoglund, PS
License No. 43932

Date: 6/13/12





Statement of Evidence:

Witness Corner to Meander Corner #61 on the North line of Section 4, Township 134 North, Range 29 West, City of East Gull Lake Township, 5th Principal Meridian, Cass County, Minnesota.

- 1858 Original US General Land Office survey by Darling, set a wood post.
- 1865 Original US General Land Office found old meander corner.
- 1927 L. Knutson prepares the plat of Manatauk and shows a monument 461.2 feet east of the northwest corner of Section 4 establishing the north line. Position falls 129.50 feet short of GLO distance, plat filed in the office of the Cass County Recorder.
- 2011 Westwood Professional Services, Inc. searched the area thoroughly for the corner and accessories, finding nothing. Set a 1/2"x14" pipe capped L.S. 43932 for a witness corner based on the northwest corner of Section 4, being a found 1-1/2" iron pipe, monuments found and mathematical data from the record plat of Manatauk. Meander corner position was computed using a GLO distance of 590.70 feet from the northwest corner of Section 4, witness corner was set at a distance of 490.96 feet from the northwest corner of Section 4. Located set monument with a VRS GPS observation. Meander corner falls in Gull Lake because of raised water elevation of 1912 dam. Analysis of the record data and field evidence indicates that the monument set by Westwood Professional Services in 2011 is the best available evidence for a witness corner to Meander Corner #61.

(Witness Corner)

Cass County Coordinates South Zone obtained by VRS GPS (NAD 83, 1996 Adj)

N: 209397.28

E: 529691.54

(Meander Corner)

Cass County Coordinates South Zone (NAD 83, 1996 Adj)

N: 209398.88

E: 529791.26

(Meander Corner)

Central State Plane Coordinate:

N: 859138.59

E: 2599847.96