



A000583792

OFFICE OF THE COUNTY RECORDER
CASS COUNTY, MINNESOTA
CERTIFIED, FILED, AND/OR
RECORDED ON

9/6/2012 9:09:59 AM

AS DOC #: A000583792

PAGES: 2

REC FEES: 0.00

KATHRYN M. NORBY
CASS COUNTY RECORDER

BY SR _____ Dep

Index Number A-25

CERTIFICATE OF LOCATION OF GOVERNMENT CORNER

NORTH EAST Corner of Section 1, Township 135, Range 30
5TH Principal Meridian, State of Minnesota, County of Cass

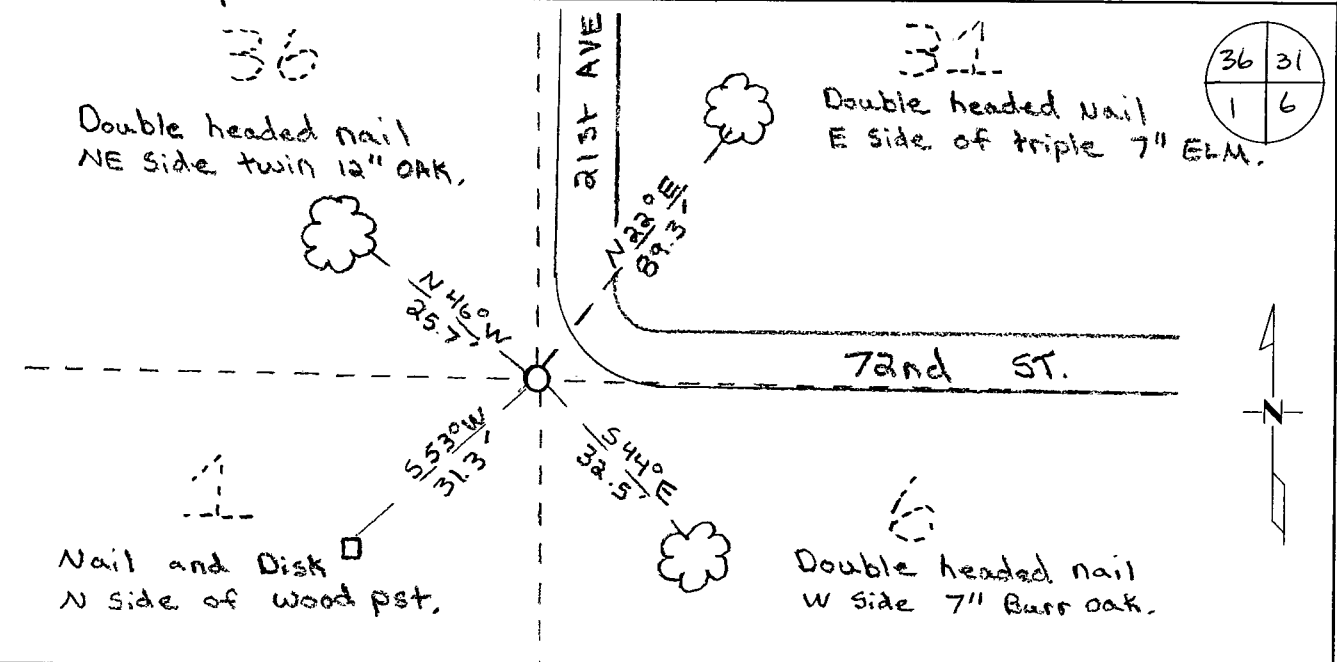
At the corner location shown on the sketch:

On 2-17-11 found a 2" IRON PIPE WITH PLUMBERS CAP

left monument as found lowered monument removed monument (explain)

On 2-17-11 placed on 3.5" Brass cap on a 2' long rebar.

Stamped CASS CTY 43932. Cut off Mon -4' below grade and place New Monument inside.



Statement of evidence for this corner location is on back of this page.

I hereby certify that this document was researched and prepared by me or under my direct supervision and that I am a licensed Land Surveyor under the laws of the State of Minnesota.

Signature Chris Hoglund
Chris Hoglund, PS
License No. 43932

Date: 6/13/12





Statement of Evidence:

Northeast Corner of Section 1, Township 135 North, Range 30 West, Home Brook Township, 5th Principal Meridian, Cass County, Minnesota.

- 1858 Original US General Land Office survey set a wood post and bearing trees noted as:
- | | | |
|-----------|---------|----------|
| 14" Aspen | N 39° W | 38 links |
| 10" Aspen | S 75° W | 30 links |
| 12" Aspen | S 40° E | 38 links |
| 12" Aspen | N 40° E | 38 links |
- 1903 W.H. Hallett – Twp Road order shows survey.
- 1909 Twp Road order shows no survey, filed in the office of the Cass County Surveyor
- 1916 E.B. Horst found roots of old Gov't B.T.s: NW, SE, SW and a 2"x4" stake. Set 2"x48" Galv. I.P. w/cap and filed in County Book "B" Page 369-376, Survey Record No. 315, also in Curo Book 56, Page 24. Reference ties:
 Stones NW, NE, SE, SW 46.70 feet
- 1921 Horst found I.M. at Twp Corner and filed in Curo Book 67, Page 67.
- 1931 John Curo found iron monument in place, filed in Curo Book 39, Pages 90,92 and 99
- 1932 John Greene shows monument in place on sketch, filed in Curo Book 196, page 7.
- 2000 Cass County Surveyors Office found 2 1/4" ODIP down 0.1' at P.I. of centerline at 72nd Ave & 21st Street. Reference ties:
- | | | |
|---------------|---------|---|
| 8" Elm | N 22° E | 89.41 feet (distance to double head nail) |
| 6" White Oak | S 44° E | 32.53 feet |
| 10" White Oak | N 38° W | 25.68 feet |
| Gate Post | S 23° W | 59.22 feet |
- 2001 Minnesota Department of Natural Resources found monument in place, filed in Cass County Surveyor's office.
- 2002 Cass County Surveyors Office found 2" ODIP, near P.I. of road and located it with GPS. Coordinates as follows from Cass County South 1996 adjustment:
 N: 241315.109 E: 518640.224
- 2003 Pat Trottier, Registered Land Surveyor Number 41002, Certificate of Survey shows monument found, filed in the office of the Cass County surveyor.
- 2004 Westwood Professional Services, Inc. finds 2" pipe in place and 2000 Cass County ties, filed in the office of the Cass County Surveyor.
- | | | |
|-------------------------|---------|------------|
| 9" Elm (2000 Tie) | N 22° E | 89.41 feet |
| 6" White Oak(2000 Tie) | S 44° E | 32.53 feet |
| 10" White Oak(2000 Tie) | N 38° W | 25.68 feet |
- 2004 Bruce Grivna (Westwood Professional Services, Inc.), Registered Land Surveyor Number 17253, files Certificate of Location Document No. 509680, dated February 8, 2006 for 2" pipe found in 2004, filed in the office of the Cass County Recorder.
- 2006 Jarrett Leas (Kramer Leas DeLeo), Registered Land Surveyor Number 42619, files Certificate of Location Document No. 518641, dated October 5, 2006 to same 2" pipe as certified by Grivna, filed in the office of the Cass County Recorder.
- 2011 Westwood Professional Services, Inc. found a 2" iron pipe and 2004 Westwood ties. Accepted found monument as that set by Horst in 1916, being a perpetuation of the original GLO survey. Set 5/8"x24" Rebar with 3.5" Brass Cap Located set monument with a 20 minute static GPS shot and verified coordinates with VRS GPS observation. Analysis of the recovered data, field evidence and survey measurements, indicates that the monument found by Westwood Professional Services, Inc is the correct perpetuation of this corner.
 Cass County Coordinates South Zone obtained by static GPS (NAD 83, 1996 Adj)
 N: 241314.76
 E: 518640.20
 Central State Plane Coordinate
 N: 891080.74
 E: 2588785.79