



A000583779

OFFICE OF THE COUNTY RECORDER
CASS COUNTY, MINNESOTA
CERTIFIED, FILED, AND/OR
RECORDED ON

9/6/2012 8:42:14 AM

AS DOC #: A000583779

PAGES: 2

REC FEES: 0.00

KATHRYN M. NORBY
CASS COUNTY RECORDER

BY SR _____ Dep

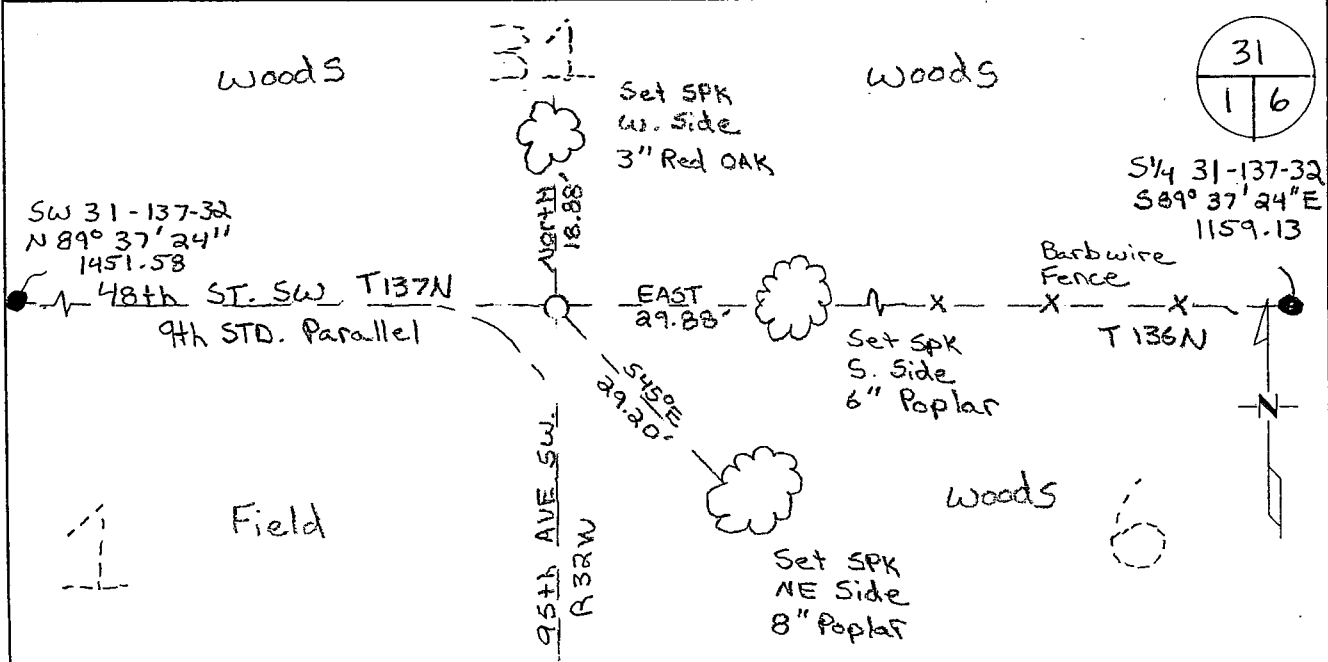
Index Number A-1

CERTIFICATE OF LOCATION OF GOVERNMENT CORNER

Closing Northwest Corner of Section 6, Township 136, Range 32
5TH Principal Meridian, State of Minnesota, County of Cass

At the corner location shown on the sketch:

- On _____ found a _____
- left monument as found lowered monument removed monument (explain)
- On 6-9-11 placed an Rebar with 3.5" Brass Cap.
Stamped Cass CTY RLS 43932.



Statement of evidence for this corner location is on back of this page.

I hereby certify that this document was researched and prepared by me or under my direct supervision and that I am a licensed Land Surveyor under the laws of the State of Minnesota.

Signature Chris Hoglund

Chris Hoglund, PS
License No. 43932

Date: 6/13/12





Westwood Professional Services
Chris Hoglund
Minnesota License No. 43932

Statement of Evidence:

Northwest Corner of Section 6, Township 136 North, Range 32 West, Poplar Township, 5th Principal Meridian, Cass County, Minnesota.

1858 Original US General Land Office survey by H. Mellen, set a wood post and bearing trees noted as:

8" White Birch	S 38° W	22 links
9" Aspen	S 55° E	59 links

1916 E.B. Horst searched area for corner and accessories, found no remains. Filed in Curo Book 65, Page 105.

2011 Westwood Professional Services, Inc. set a 24" rebar with a 3.5" Brass Disk proportionally between the Southwest Corner of Section 31, T. 137, R. 32 and the South Quarter Corner of Section 31, T. 137, R. 32. Position fit road going south and West. Located set monument with a VRS GPS observation. Analysis of the record data and field evidence indicates that the monument set by Westwood Professional Services in 2011 is the accepted position for of this corner.

Cass County Coordinates South Zone obtained by static GPS (NAD 83, 1996 Adj)
N: 272921.99
E: 421139.43

Central State Plane Coordinate:
N: 922950.17
E: 2491383.94