

CERTIFICATE OF LOCATION OF GOVERNMENT CORNER

I hereby certify that this survey, plan, or report was prepared by me or under my direct supervision and that I am a duly Licensed Land Surveyor under the laws of the State of Minnesota.

OFFICE OF THE COUNTY RECORDER

County of Cass

I hereby certify that this document was filed in the Office of the County Recorder at _____ o'clock _____ .M. on the _____ day of _____, 20____ A.D.

Cynthia M. Hidde
Cynthia M. Hidde

County Recorder _____

Date: 7/12/12 License No: 44881
44881

By: _____, Deputy
DOCUMENT NO. _____

Northeast Corner of Section 28, Township 137, Range 30, 5th P.M.

On May 11, 2012 found a 1/2"Ø Iron Pipe on centerline of 40th St.

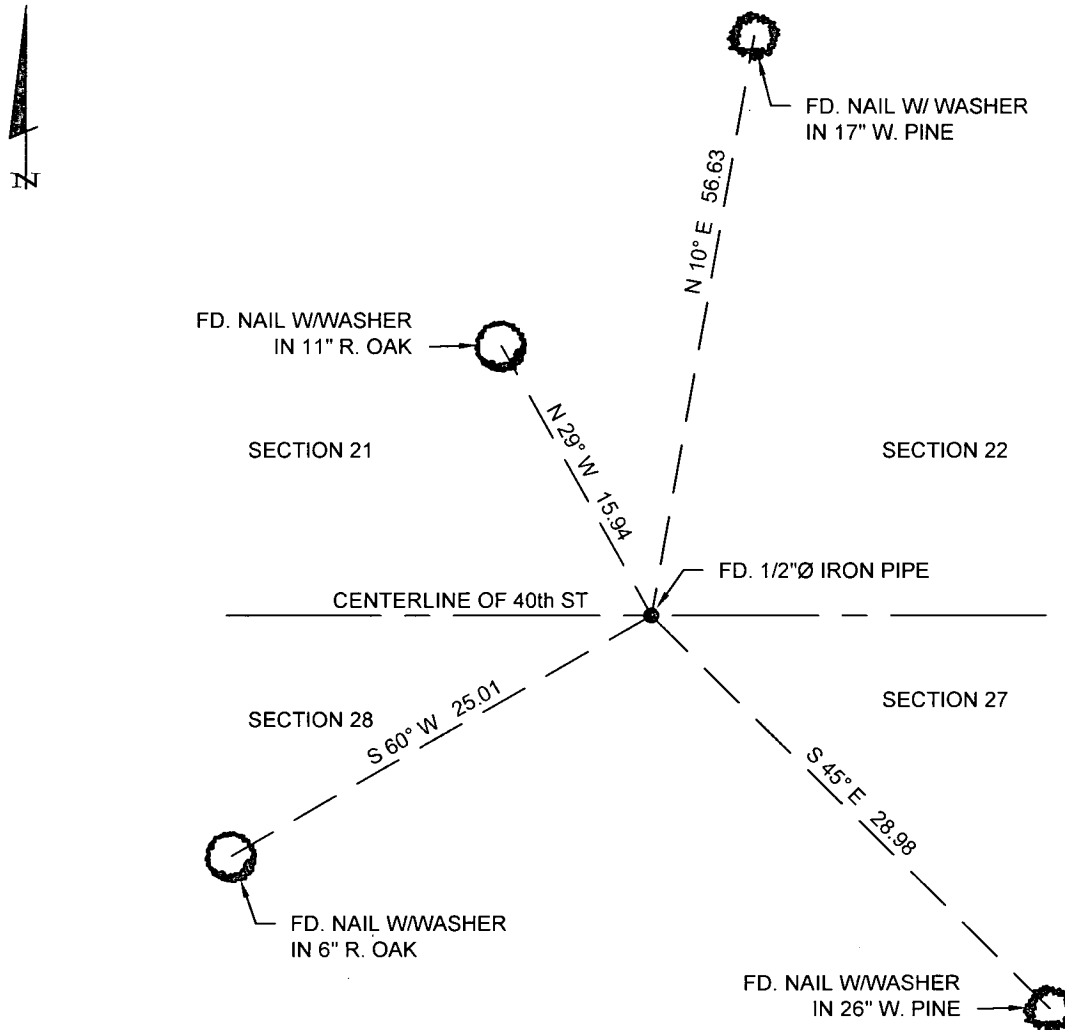
left monument as found, lowered monument, removed monument (explain)

On _____ placed a _____

SKETCH OF REFERENCE TIES

Corner Index: **R-13**

Not to Scale



Statement of evidence for this corner position is on the back of this page



Statement of Evidence

Northeast Corner of Section 28, Township 137 North, Range 30 West
of the 5th P.M., Cass County, Minnesota

Oct. R. Cronk, General Land Office (GLO) Deputy Surveyor set a post for the original corner 1870 and referenced it as follows: 8" W. Birch, S31°E, 41 links (27.1 feet); 8" Aspen, S 42°30' W, 47 links (31.0 feet); 7" W. Birch, N2°W 33 links (21.8 feet); 7" W. Pine, N49°E, 27 links (17.8 feet). Said records are on file with the Minnesota Historical Society, St. Paul, Minnesota, copies are filed with the Cass County Surveyor's Office (CCSO)

Nov. J.W. Curo, LS 1428, Cass County Surveyor, Survey Record No. 273, Book B, page 147 1908 and Curo Book 85, page 247, both on file in the CCSO, state "Beginning at the true corner to secs 21, 22, 27 & 28, 137-30, previously set by me we run west".

April B. Hippen and C. Loe, technicians, CCSO, notes on file in the CCSO, found 3/4" ODIP, on 2000 centerline of old road grade (40th St). The monument, recovered and referenced the following ties: 17" W. Pine, N10°E, 56.63 ft.; 26" W. Pine, S45°E, 28.98 ft.; 6" R. Oak, S60°W, 15.94 ft.; 11" R. Oak, N29°W, 15.94 ft.

2012 On May 11, 2012 Stonemark Land Surveying, Inc. found a 1/2" Iron Pipe on centerline of 40 th St. and recovered the ties set by Hippen and Loe.

2012 This recovered monument was accepted on May 11, 2012 by Cynthia M. Hidde, PLS #44881 as a perpetuation of the original corner.

A000582326
OFFICE OF COUNTY RECORDER
CASS COUNTY MINNESOTA
CERTIFIED, FILED, AND/OR
RECORDED ON
07/19/2012 2:12:35 PM
AS DOC #: A000582326
PAGES: 2 REC FEES: 0.00
KATHRYN M. NORBY
COUNTY RECORDER