

CERTIFICATE OF LOCATION OF GOVERNMENT CORNER

I hereby certify that this survey, plan, or report was prepared by me or under my direct supervision and that I am a duly Licensed Land Surveyor under the laws of the State of Minnesota.

OFFICE OF THE COUNTY RECORDER
County of Cass

I hereby certify that this document was filed in the Office of the County Recorder at _____ o'clock _____ .M. on the _____ day of _____, 20____ A.D.

Cynthia M. Hidde
Cynthia M. Hidde

County Recorder _____

Date: 7/12/12 License No: 44881
44881

By: _____, Deputy
DOCUMENT NO. _____

Northeast Corner of Section 32, Township 137, Range 30, 5th P.M.

On May 1, 2012 found a nail with washer down 0.2'±

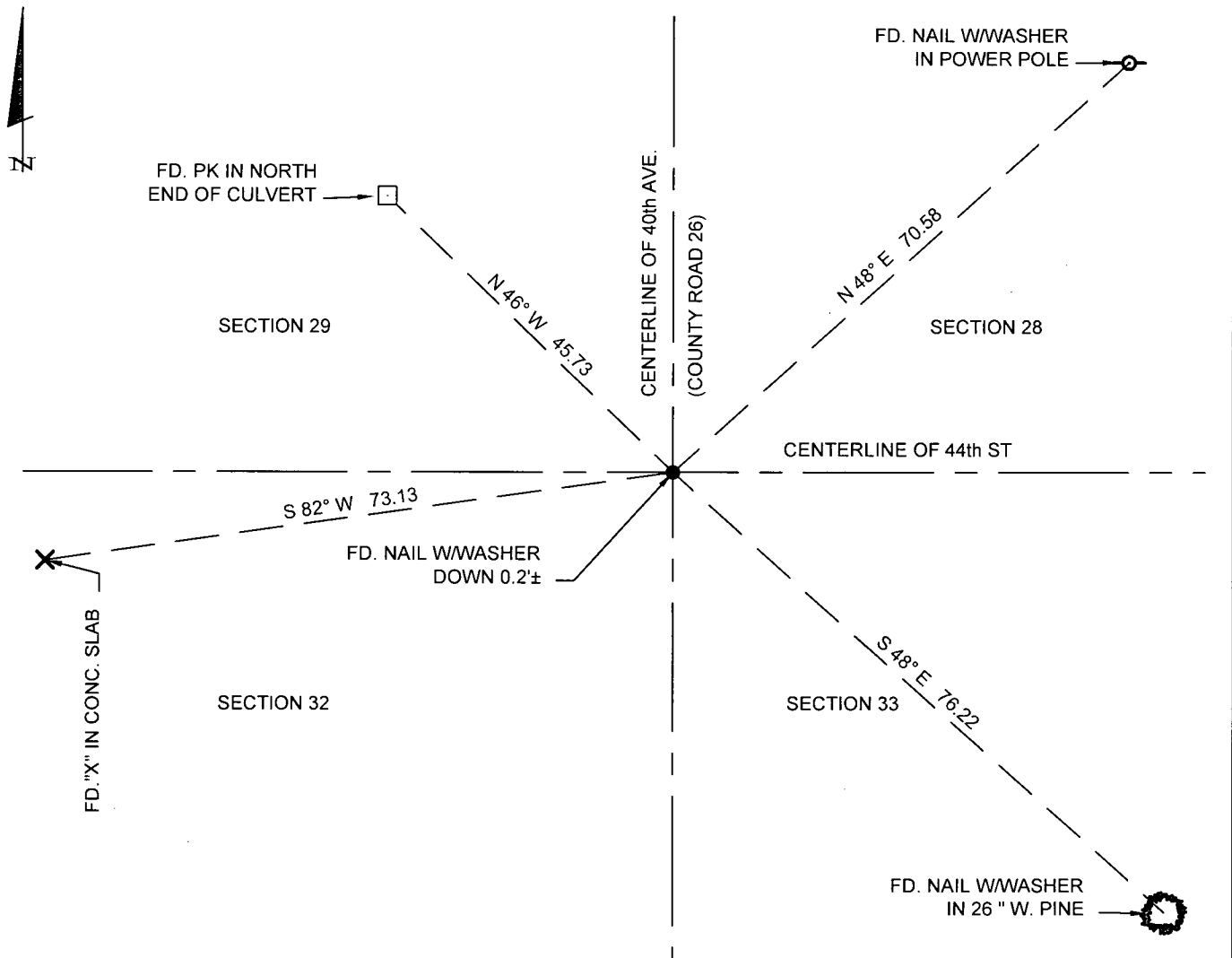
left monument as found, lowered monument, removed monument (explain)

On _____ placed a _____

SKETCH OF REFERENCE TIES

Corner Index: **V-9**

Not to Scale



Statement of evidence for this corner position is on the back of this page



Statement of Evidence

Northeast Corner of Section 32, Township 137 North, Range 30 West
of the 5th P.M., Cass County, Minnesota

- 1870 R. Cronk, General Land Office (GLO) Deputy Surveyor set a post for the original corner and referenced it as follows: 10" W. Pine, N80°W, 4 links; 8" W. Pine, S47°E, 9 links; 12" W. Pine, N19°E, 51 links; 6" W. Birch, S50°W, 38 links.
- 1908 John Curo, Book "B", page 140-157. Found old Govt. B.T. stumps: 10" W. Pine, N80°W, 4 lks.; 8" W. Pine, S47E, 9 lks.; 12" W. Pine, N19E, 51 lks. Set 1"x12" Iron Pin. Also Book 85, page 232.
- 1911 A.W. Moulster -Bk. 49, page 126, Fd. iron set by Curo P. 133
Set 2"x48" I.M.
- 1915 John Curo, County Surveyor Record Book "B", pages 115-118 and also on Book 90, page 57. Fnd. Iron Monument.
- 1928 John W. Curo, Plat- MAPLE HILL CEMETARY.
- 1947 John Curo, Book "D", page 330 and marked the following ties: 15" W. Pine, N68°-38'E' 196.90 ft.; 16" W. Pine, S52°-26'E, 75.22 ft.; 5" B. Oak, S5°-09'W, 201.23 ft.; 4" Birch, N56°-48'W, 49.15 ft.
- 1969 Co Hwy. Dept. Co. Rd #26. Found 2" I.P. at P.I. of roads and marked the following ties: Power Pole, NE, 57.0 ft.; Tele Pole, SW, 39.0 ft.; 24" W. Pine, SE, 76.0 ft.
- 2000 CCSO - Fnd. in place 2" I.P. down 1.2'. Located centerline C.R. 26 & centerline 44th St. SW. Marked the following Ref. Ties: Power Pole, N48°E, 70.58 ft.; 26" W. Pine, S48°E, 76.22 ft.; "X" in conc. slab, S82°W, 73.13 ft.; P.K. in N. end culv., N46°W, 45.73 ft.
- 2012 On May 11, 2012 Stonemark Land Surveying, Inc. found a nail with washer down 0.2'± and recovered ties set by CCSO.
- 2012 This recovered monument was accepted on May 11, 2012 by Cynthia M. Hidde, PLS #44881 as a perpetuation of the original corner.

A000582323
OFFICE OF COUNTY RECORDER
CASS COUNTY MINNESOTA
CERTIFIED, FILED, AND/OR
RECORDED ON
07/19/2012 2:12:32 PM
AS DOC #: A000582323
PAGES: 2 REC FEES: 0.00
KATHRYN M. NORBY
COUNTY RECORDER