

# CERTIFICATE OF LOCATION OF GOVERNMENT CORNER

Northeast      Corner of Section   1    
 Township 141 N, Range 26 W, 5th P.M.  
 STATE OF MINNESOTA, COUNTY OF CASS.

**A000581324**  
**OFFICE OF COUNTY RECORDER**  
**CASS COUNTY MINNESOTA**  
**CERTIFIED, FILED, AND/OR**  
**RECORDED ON**  
**06/12/2012 11:26:02 AM**  
**AS DOC #: A000581324**  
**PAGES: 3 REC FEES: 0.00**  
**KATHRYN M. NORBY**  
**COUNTY RECORDER**

(reserved for recording data)

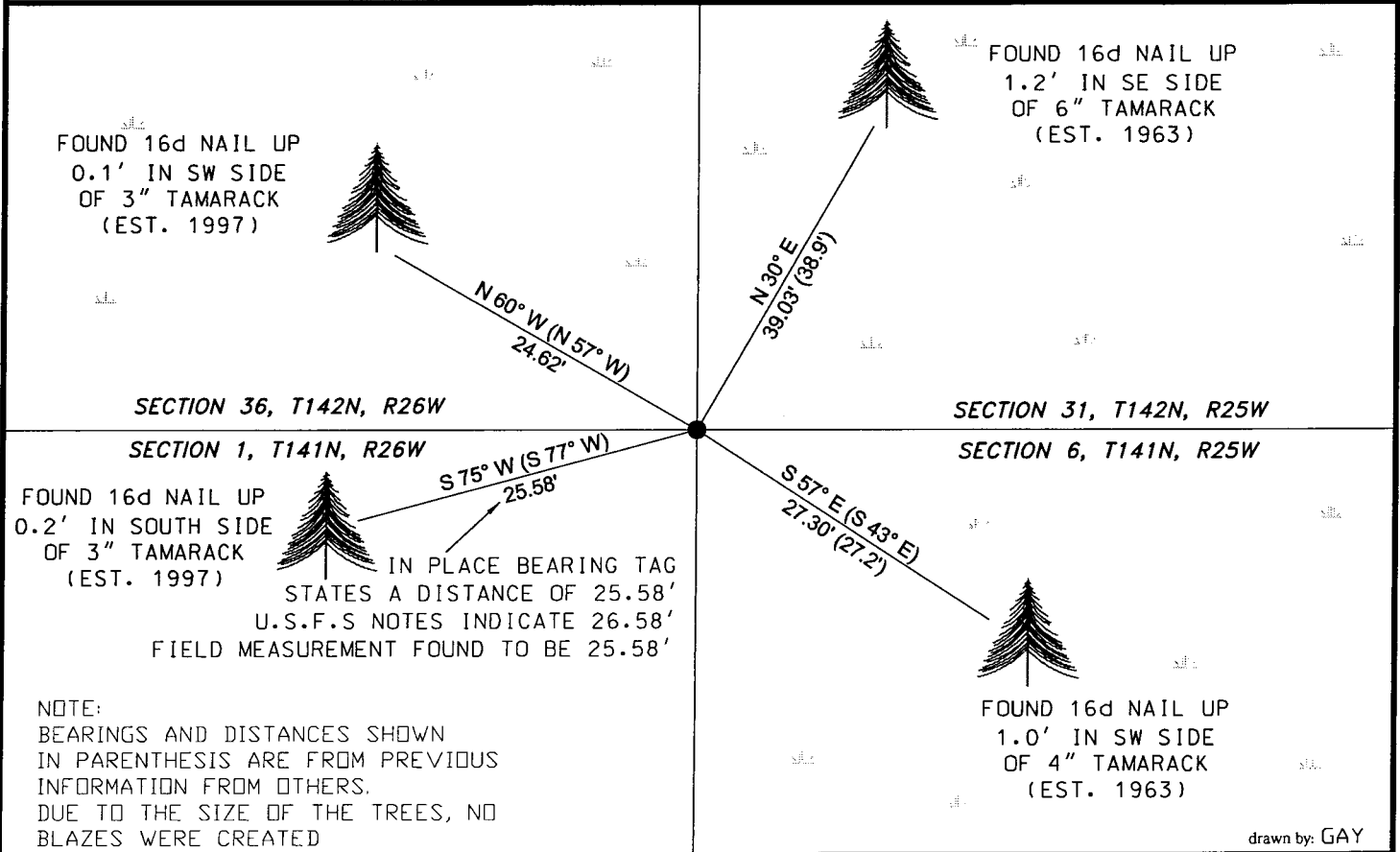
On 5-17-2011, found a(n): 2" X 60" Iron pipe filled  
DATE  
with concrete having a 3" Brass Cap.

- left monument as found       lowered monument  
 removed monument (explain)       raised monument

On 5-17-2011, set a(n): 1" x 72" Iron Pipe with  
DATE  
3 1/2" aluminum cap flush with surface, to meet  
township corner requirements.

See "Statement of Evidence" for further details (on back)

GPS I.D.:            Co. Proj. No.:           



drawn by: GAY

"SKETCH OF REFERENCE TIES"  
 (not to scale - bearings are magnetic)  
 Ties are measured to center of monument unless otherwise noted.  
 UNITS =  Metric  English

NAD 83 Latitude (N): 47°03'49.25921"  
 Longitude (W): 93°54'07.74058"  
 CCNZC 83/96 Northing: 195019.78  
 Easting: 578391.71  
 NAD 83 S.P. Northing: 1080831.17  
 Central Zone Easting: 2711361.41

I hereby certify that this document and the data contained herein was prepared by me or under my direct supervision.  
Dennis J. Warner 5/10/2012 License No. 42656  
signature date  
 Printed Name: Dennis J. Warner  County Surveyor  Land Surveyor

**STATEMENT OF EVIDENCE:** Township corner, northeast corner of Section 1, T141N, R26 West of the 5<sup>th</sup> Principal Meridian.

1871 This corner was established by Walker, Allen & Putnam, Deputy Surveyors, in the township boundary survey. Their notes indicate a post was placed at the corner and Established witnesses as follows:

Dead Tamarack	4"	N 43° E	13 links	(8.58 feet)
Dead Tamarack	3"	N 21° W	32 links	(21.12 feet)
Dead Tamarack	3"	S 54° W	59 links	(38.94 feet)
Dead Tamarack	5"	S 38° E	23 links	(15.18 feet)

1935 C.C.C. notes by Dorman Sutton, found a 4"x 4"x 30" scribed oak stake. No bearing trees were found. He set the following accessory:

Tamarack	4"	N 42° W	24 links	(15.84 feet)
----------	----	---------	----------	--------------

Information on file with the US Forest Service Office in Cass Lake. Book 3-142-26, page 75.

1936 C.C.C. notes by Harrison Adams, found a post scribed in fair condition, and established witnesses as follows:

Tamarack (FSLP)*	8"	N 45° E	23 links	(15.18 feet)
Tamarack	6"	S 70° E	23 links	(15.18 feet)
Tamarack	6"	S 85° W	42 links	(27.72 feet)

Information on file with the US Forest Service Office in Cass Lake. Book 3-142-26, page 75. \* FSLP refers to Forest Service Land Poster.

1963 William Okerman found the top and point of a 4"x 4" square post, and a 4" Tamarack N 42° E .24 chains (15.84 feet). He also found an additional wood point and a 1"x 30" iron pipe marking the location of an old fence running East and West. Okerman perpetuated this corner by placing a 2"x 60" iron pipe with a 3" brass cap, and established witnesses as follows:

Tamarack	8"	N 30° E	38.9 feet
Tamarack	9"	N 80° E	25.6 feet
Tamarack	4"	S 43° E	27.2 feet
Tamarack	10"	S 42° E	15.8 feet

Information on file with the US Forest Service Office in Cass Lake. Book 1-142-26, page 73.

**STATEMENT OF EVIDENCE:** Township corner, northeast corner of Section 1, T141N, R26 West of the 5<sup>th</sup> Principal Meridian.

1965 William Okerman, license number 6807, filed a Affidavit As To Location Of Government Corner, document number not shown, but is signed and dated with the Office Of Register Of Deeds. Information shown is from the 1963 entry as shown above.

1994 Milo Stefan, RLS #12261, filed a Certificate of Survey showing the northeast corner of Section 1, Township 141 North, Range 26 West, as a "Found GLO Monument". Information on file with the Cass County Survey Office.

1997 R. Main and C. Krause, U.S. Forest Service, found the 2"x 60" iron pipe with a 3" brass cap set by William Okerman in 1963. Monument was 4" above swamp. They also recovered 3 good bearing trees, and the 10" tamarack is now windfall. They made additional bearing trees as follows:

Tamarack	3 ½"	S 77° W	26.58 feet
Tamarack	4"	N 57° W	24.62 feet
SFP		East	3.8 feet

Information on file with the US Forest Service Office in Cass Lake.

1998 Cass County Survey Office personnel found a 2" x 60" galvanized steel monument 36" in ground with a 3" bronze tablet and lists the following witnesses:

SFP	w/54-9	East	3.8 feet		
Tamarack	10"	N30E	39.09 feet	(Orig. Bt)	
Tamarack	10"	N42E		(Orig. Bt)	(Dead and down)
Tamarack	10"	N80E	25.64 feet	(Orig. Bt)	
Tamarack	5"	S43E	27.28 feet		
Tamarack	3"	S77W	26.58 feet	BT tag 8/97	
Tamarack	3"	N57W	24.62 feet	BT tag 8/97	

Information on file with the Cass County Survey Office.

1998 Milo Stefan, RLS #12261, filed a Certificate of Survey showing the northeast corner of Section 1, Township 141 North, Range 26 West as a "Found GLO Monument". Information on file with the Cass County Survey Office.

2011 Personnel from Short Elliott Hendrickson found a 2"x 60" iron pipe with a 3" brass cap and the 8" Tamarack and 4" Tamarack set in 1963 by William Okerman. They also found 2 bearing trees established by R. Main and C. Krause in 1997. The existing monument was removed and replaced with a 1"x 72" iron pipe with a 3 ½" aluminum cap, with the existing monument buried next to it. Witnesses were found and made as shown on the face of this certificate. An analysis of the record information and field evidence supports this monument as the best evidence of the original corner position.