

CERTIFICATE OF LOCATION OF GOVERNMENT CORNER

A000581317
OFFICE OF COUNTY RECORDER
CASS COUNTY MINNESOTA
CERTIFIED, FILED, AND/OR
RECORDED ON
06/12/2012 11:25:55 AM
AS DOC #: A000581317
PAGES: 3 REC FEES: 0.00
KATHRYN M. NORBY
COUNTY RECORDER

Witness Corner to Meander (#1) Corner of Section 1
 Township 142N, Range 25 W, 5th P.M.
 STATE OF MINNESOTA, COUNTY OF CASS.

On 5-02-2011, found a(n): 5/8" x 4' Rebar with a
with a 2 1/2" aluminum cap up 1.3' from the surface and
surrounded by rocks. Monument is 3' ± from the shore.

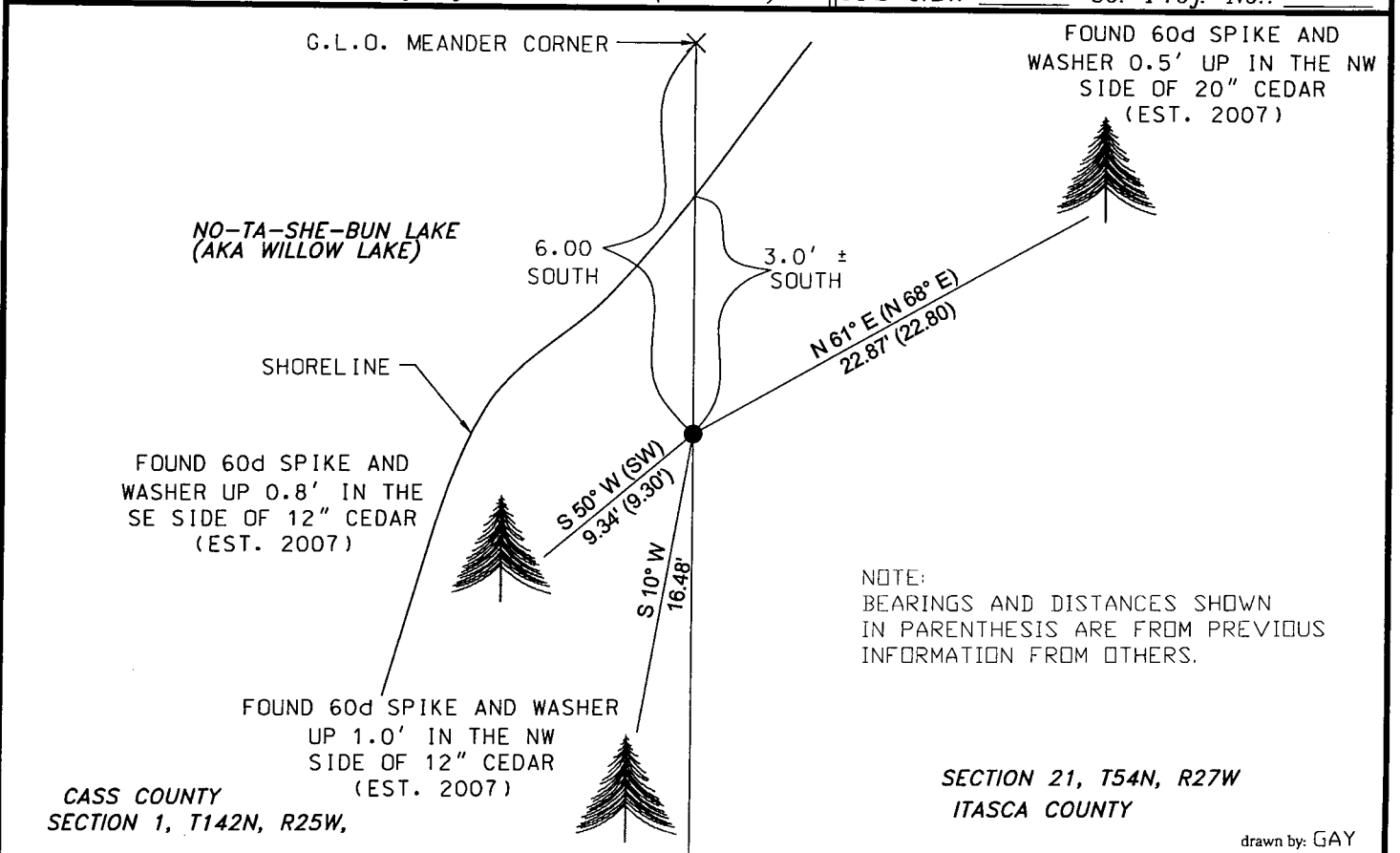
- left monument as found lowered monument
 removed monument (explain) raised monument

On _____, set a(n): _____

(reserved for recording data)

See "Statement of Evidence" for further details (on back)

GPS I.D.: _____ Co. Proj. No.: _____



NOTE:
 BEARINGS AND DISTANCES SHOWN
 IN PARENTHESIS ARE FROM PREVIOUS
 INFORMATION FROM OTHERS.

CASS COUNTY
 SECTION 1, T142N, R25W,

SECTION 21, T54N, R27W
 ITASCA COUNTY

drawn by: GAY

"SKETCH OF REFERENCE TIES"
 (not to scale - bearings are magnetic)
 Ties are measured to center of monument
 unless otherwise noted.
 UNITS = Metric English

NAD 83 Latitude (N):	<u>47°08'55.90379"</u>
Longitude (W):	<u>93°46'28.09150"</u>
CCNZC 83/96 Northing:	<u>226243.37</u>
Easting:	<u>610039.41</u>
NAD 83 S.P. Northing:	<u>1112064.60</u>
Central Zone Easting:	<u>2724996.36</u>

Dennis J. Warner
 signature

5/10/2012
 date

License No. 42656

Printed Name: Dennis J. Warner

County Surveyor Land Surveyor

STATEMENT OF EVIDENCE: Witness Corner to the Meander corner (#1), south shore of No-ta-she-bun Lake, Section 1, T142N, R25West of the 5th Principal Meridian.

1867 The Meander Corner was established by Walker, Geo. R. & Geo. E. Stuntz, Deputy Surveyors, in the township boundary survey. Their notes indicate a post was placed at the corner and established witnesses as follows:

Cedar 6" S 25° W 22 links (14.52 feet)

1950 Old Township Retracement Field Book 51, page 21, reports the GLO witness with the letters "OK". Information on file in the Itasca County Department of Surveying and Mapping.

1952 Personnel from Itasca County Department of Surveying and Mapping (IC/DSM) recovered the GLO Cedar as part of a Township remonumentation program. Itasca County believes this is when the Itasca County monument was set. Old Township Retracement Field Book 9, pages 11 and 12, and established witnesses as follows:

Cedar 10" N 73° E 19.56 feet

1997 IC/DSM recovered the GLO and 1952 witnesses. They note the monument is about 2 feet into the lake. They did not add any new witnesses. Township 54-27 Field Book 1, page 37.

1998 IC/DSM traversed to this corner. Township 54-27 Field Book, page 47.

2007 IC/DSM recovered the Itasca County monument frozen in the ice. They set a 5/8"x 48" rebar with a stamped aluminum cap 6' southerly, on line between the recovered GLO meander corner in the lake and the GLO traceable southeast corner of Section 1. 142-25. Township 54-27, Field Book 2, page 3, and established witnesses as follows:

Cedar 17 1/2" N 68° E 22.80 feet

Cedar 10" S 10° W 16.48 feet

Cedar 15 1/2" SW 9.30 feet

2011 Timothy Wotzka, license number 19526, Itasca County Surveyor, filed a Certificate Of Location Of Government Corner, document number not legible, with the Itasca County Recorder. The 2007 information is shown on the Certificate. In addition is listed the Lat/Long for both the MC and the WCMC as follows:

MC Latitude: 47° 08' 55.962" Longitude: 93° 46' 28.085"

WCMC Latitude: 47° 08' 55.903" Longitude: 93° 46' 28.085"

(NAD83(1996) +/-0.003 Arc seconds)

STATEMENT OF EVIDENCE: Witness Corner to the Meander corner (#1), south shore of No-ta-she-bun Lake, Section 1, T142N, R25West of the 5th Principal Meridian.

2011 Personnel from Short Elliott Hendrickson found the 5/8"x 48" rebar with a 2 1/2" aluminum cap set in 2007 by the Itasca County Department of Surveying and Mapping. The monument was located in a mound of rocks and 1.3' above the surface. The monument was left in place and witnesses were found and made as shown on the face of this certificate. An analysis of the record information and field evidence supports this monument as the best evidence of the corner position.