

# CERTIFICATE OF LOCATION OF GOVERNMENT CORNER

Northeast          Corner of Section   1  

Township 143 N , Range 26 W , 5th P.M.

STATE OF MINNESOTA, COUNTY OF CASS.

**A000581309**  
**OFFICE OF COUNTY RECORDER**  
**CASS COUNTY MINNESOTA**  
**CERTIFIED, FILED, AND/OR**  
**RECORDED ON**  
**06/12/2012 11:25:47 AM**  
**AS DOC #: A000581309**  
**PAGES: 3 REC FEES: 0.00**  
**KATHRYN M. NORBY**  
**COUNTY RECORDER**

(reserved for recording data)

GPS I.D.:                  Co. Proj. No.:                 

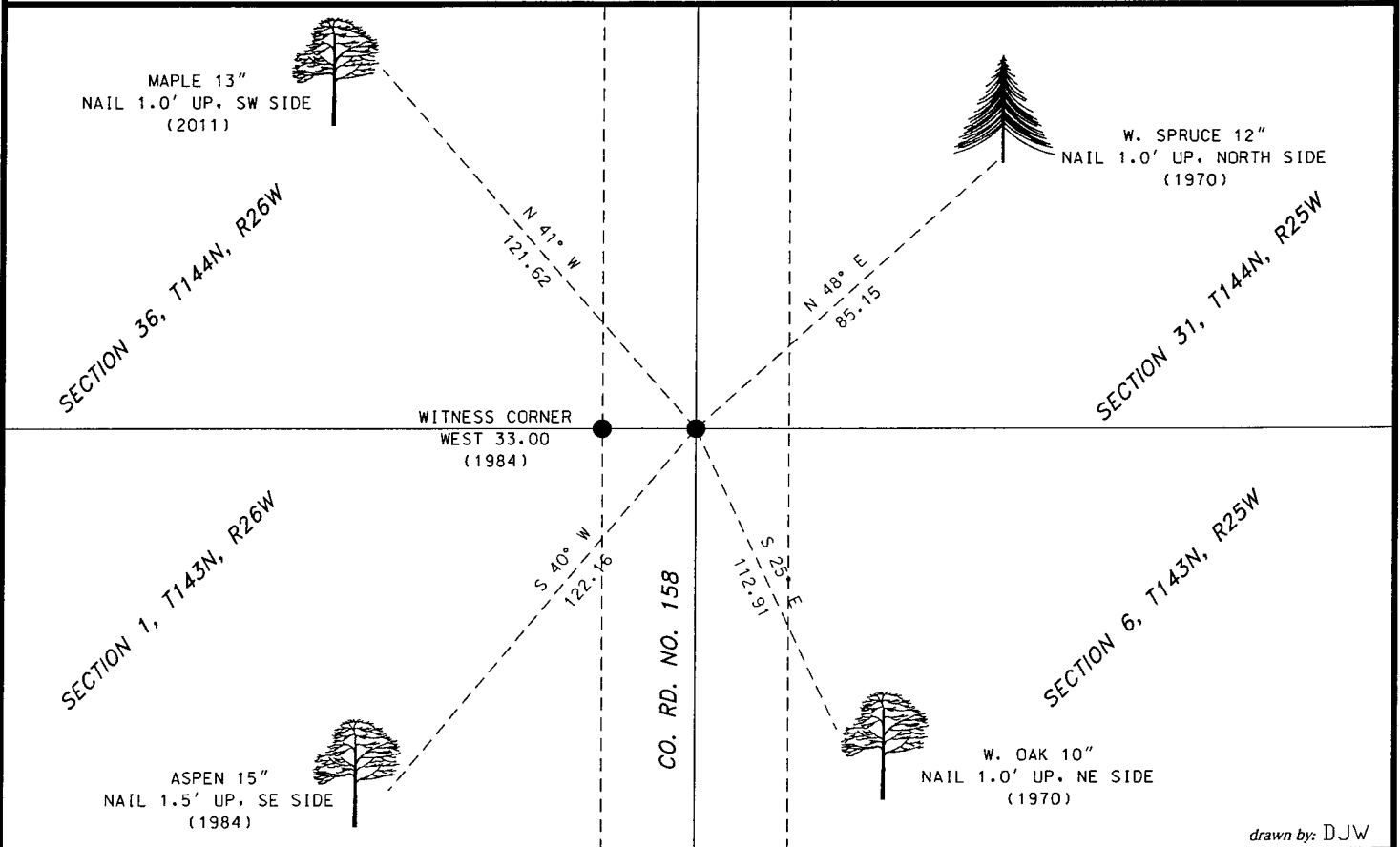
On   3-22-2011  , found a(n):                                 

6' concrete cylinder with a 3" brass cap approximately  
8' below the surface of a gravel road.

- left monument as found       lowered monument  
 removed monument (explain)       raised monument

On                         , set a(n):                                 

See "Statement of Evidence" for further details (on back)



drawn by: DJW

## "SKETCH OF REFERENCE TIES"

(not to scale - bearings are magnetic)

Ties are measured to center of monument unless otherwise noted.

UNITS =  Metric  English

NAD 83 Latitude (N):	<u>47°14'16.324"</u>
Longitude (W):	<u>93°54'06.608"</u>
CCNZC 83 Northing:	<u>258556.15</u>
Easting:	<u>578214.31</u>
NAD 83 S.P. Northing:	<u>1176117.24</u>
(Central) Easting:	<u>2648190.34</u>

Dennis J. Warner  
*signature*  
 Printed Name: Dennis J. Warner

hereby certify that this document and the data contained herein was prepared by me or under my direct supervision.

5/10/2012  
 date

License No. 42656

County Surveyor       Land Surveyor

**STATEMENT OF EVIDENCE:** Township corner, northeast corner of Section 1, T143N, R26 West of the 5<sup>th</sup> Principal Meridian.

1872 This corner was established by Hayward & Griffin, Deputy Surveyors, in the township boundary survey. Their notes indicate a post was placed at the corner and established witnesses as follows:

W. Pine	8"	N33 1/2E	12 links	(7.92 feet)
W. Pine	10"	S48E	20 links	(13.20 feet)
W. Pine	10"	N57W	21 links	(13.86 feet)
W. Pine	8"	S71W	23 links	(15.18 feet)

1914 John Curo, Cass County Surveyor, found all four original BT's (stumps) and a 6" township corner post, plainly marked. Reset old stake. County Record Book "B", pages 413-417.

1930's N.F. Shaw, Engineer, CCC notes. Found a cedar post 30" above ground in good condition. Metal location poster on fence post on west side of road. Poster states corner bears East 33.00 feet. Information on file with US Forest Service Office in Cass Lake, Book 1, 143-25, page 55.

1953 R.W. Fassett, CCC, set a temporary stake N86W, 57 links from true corner, for a witness corner, and established witnesses as follows:

Aspen 6"	N80W	48 links	(31.68 feet)
Birch 6"	S42W	75 links	(49.50 feet)
C&G.S. BM#D-265	N01E	57 links	(37.60 feet)

Information on file with the Cass County Survey Office.

1965 James Ekstrom, USFS, dug in the road 33 feet West of old USFS poster on a very old post. No evidence was found. Information on file with the US Forest Service in Cass Lake.

1970 Curt Krause, USFS, found remains of Fassett resurvey of 1953 as follows:

2"x2" hub (rotted)	N86W	37.62 feet
C&G.S. BM#D-265	N01E	37.60 feet
Aspen stump	N80W	31.70 feet
Stump hole	S42W	49.50 feet

He set a 6" diameter x 24" long cylindrical concrete monument, 6" below the surface of the road, with a 3" brass cap, from which:

W. Spruce	8"	N44E	84.9 feet
W. Oak	7"	S28E	113.1 feet
Aspen	9"	S84W	95.6 feet
USGS benchmark		N45W	55.1 feet
Cedar post	4"	N57E	38.1 feet with signs attached

Information on file with the US Forest Service in Cass Lake.

**STATEMENT OF EVIDENCE:** Township corner, northeast corner of Section 1, T143N, R26 West of the 5<sup>th</sup> Principal Meridian.

1976 BLM dependent resurvey. Found the 1970 USFS monument 8" below FS Road No. 126 and noted the following witnesses:

Balsam                    7"        N44E 85.14 feet

USGS Benchmark                N44W 55.44 feet

USGS Reference monument    N85W 33.00 feet

Information on file with the Cass County Survey Office.

1981 William Okerman filed a Certificate Of Location of Government Corner, Doc. No. 259045, on the 1970 USFS data. On file with the County Recorder.

1982 Whitehorn & Kosenko, USFS personnel, found a brass cap 0.6 feet deep in centerline of N-S road. Also found a ½" iron pipe down 0.4 feet and 1.60 feet N40W. A Certificate of Survey was filed with the with the Cass County Recorder's Office as Document Number 277427.

1984 Personnel from Advance Surveying found the 1970 concrete monument and shows the monument in place on a Certificate of Survey filed with the Itasca County Recorders Office as Document Number 372756.

1990 William Osufsen, filed a Certificate Of Location of Government Corner (Doc. No. 325468) and states that he recovered a 6" concrete monument with a brass cap 6" below the surface of USFS Road No. 126 and makes note of the following witnesses:

Spruce            14"        N48E 85.15 feet        1984

Cedar post                N57E 38.4 feet        1970

W. Oak            9"        S28E 112.91 feet        1984

Aspen            12"        S44W 122.16 feet        1984

Aspen stump                S84W 95.30 feet        1970

USGS Ref Mon                N85W 33.00 feet

Sign post                West 34.00 feet        1990

X Rock                N66W 70.15 feet        1984

USGS BM D-265                N42W 55.13                1948

Maple            8"        N44W 121.62 feet        1990

2001 Cass County Survey Office personnel found the USFS monument down 0.8 feet on centerline of County Road 158. Also recovered the 1984 and 1990 witnesses. Information on file in the Cass County Survey Office.

2011 Personnel from Short Elliott Hendrickson found the 1970 concrete monument and witnesses were found and made as shown on the face of this certificate. An analysis of the record information and field evidence supports this monument as the best evidence of the corner position.