

CERTIFICATE OF LOCATION OF GOVERNMENT CORNER

Northeast Corner of Section 1

Township 143 N, Range 28 W, 5th P.M.

STATE OF MINNESOTA, COUNTY OF CASS.

A000581307
OFFICE OF COUNTY RECORDER
CASS COUNTY MINNESOTA
CERTIFIED, FILED, AND/OR
RECORDED ON
06/12/2012 11:25:45 AM
AS DOC #: A000581307
PAGES: 2 REC FEES: 0.00
KATHRYN M. NORBY
COUNTY RECORDER

(reserved for recording data)

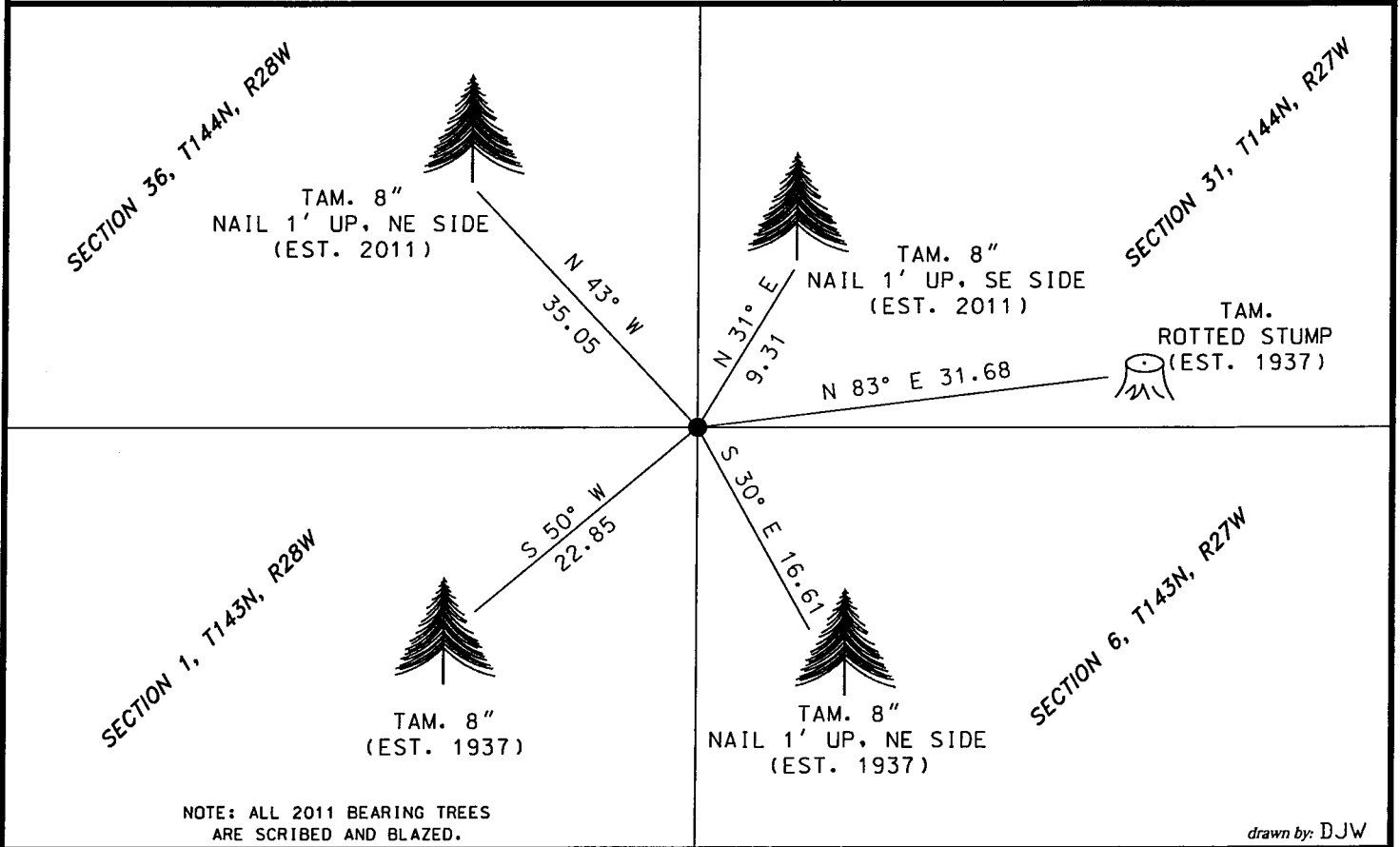
GPS I.D.: _____ Co. Proj. No.: _____

On 2-16-2011, found a(n):
 brass cap in a 7' circular concrete monument 24' in length 1.5 feet below the swamp with a 2 1/2" pipe alongside.

- left monument as found
- lowered monument
- removed monument (explain)
- raised monument

On _____, set a(n):

See "Statement of Evidence" for further details (on back)



NOTE: ALL 2011 BEARING TREES ARE SCRIBED AND BLAZED.

drawn by: DJW

"SKETCH OF REFERENCE TIES"

(not to scale - bearings are magnetic)

Ties are measured to center of monument unless otherwise noted.

UNITS = Metric English

NAD 83 Latitude (N):	<u>47°14'22.921"</u>
Longitude (W):	<u>94°09'20.143"</u>
CCNZC 83 Northing:	<u>259073.08</u>
Easting:	<u>515171.61</u>
NAD 83 S.P. Northing:	<u>1144857.37</u>
(Central) Easting:	<u>2648118.70</u>

Dennis J. Warner
 signature

Printed Name: Dennis J. Warner

I hereby certify that this document and the data contained herein was prepared by me or under my direct supervision.

5/10/2012
 date

License No. 42656

County Surveyor Land Surveyor

STATEMENT OF EVIDENCE: Township corner, northeast corner of Section 1, T143N, R28 West of the 5th Principal Meridian.

1873 This corner was established by P.H. Conger, Deputy Surveyor, in the township boundary survey. His notes indicate a post was placed at the corner and established witnesses as follows:

Tamarack	10"	N70W	14 links (9.24 feet)
Tamarack	9"	S20W	13 links (8.58 feet)
Tamarack	7"	S10E	20 links (13.2 feet)
Tamarack	3"	N80W	17 links (11.22 feet)

1900 US Army Corps of Engineers, surveyed the Pokegama Reservoir, Section 6, T143N, R27W and shows this corner in place. Information on file with the US Forest Service Office in Cass Lake.

1913 John Curo, Cass County Surveyor, and crew, in Book A, page 559, Survey Record No. 226 recovered the bearing trees (stumps to the SW and SE very old and rotted) they find the distance of the SW bearing tree to be 20 links and the SE bearing tree to be 13 links, which are reverse of the notes.

They also recovered the original stake and replaced it with a 2 ½" x 48" galvanized iron with a 3" cap, and established witnesses as follows:

Tamarack	5"	S52 deg 18'E	6.38 feet
Tamarack	5"	S57 deg 11'W	17.31 feet
Tamarack	5"	N10 deg 20'E	16.81 feet
Tamarack	3"	N41 deg 04'W	22.19 feet

1937 During a GLO dependant resurvey, on file with the US Forest Service Office in Cass Lake, personnel found an original tamarack stump 12" bearing S10E at 14 links. They also found a Cass County 2 1/2" x 24" iron pipe. They replaced the recovered iron pipe with a 7" concrete monument, 24" in length with a brass cap, and set the county monument along side of the new monument, and established witnesses as follows:

Tamarack	8"	N83 1/2E	48 links (31.68 feet)
Tamarack	5"	S29 1/2E	25 links (16.5 feet)
Tamarack	5"	S51 1/4W	35 links (23.10 feet)
Tamarack	5"	N45 3/4W	41 links (27.06 feet)

2011 Personnel from Short Elliott Hendrickson found the 1937 monument and witnesses were found and established as shown on the face of this certificate. An analysis of the record information and field evidence supports this monument as the best evidence of the corner position.