

CERTIFICATE OF LOCATION OF GOVERNMENT CORNER

Meander (#14) Corner of Section 12
 Township 144 N, Range 26 W, 5th P.M.
 STATE OF MINNESOTA, COUNTY OF CASS.

A000581303
OFFICE OF COUNTY RECORDER
CASS COUNTY MINNESOTA
CERTIFIED, FILED, AND/OR
RECORDED ON
06/12/2012 11:25:41 AM
AS DOC #: A000581303
PAGES: 2 REC FEES: 0.00
KATHRYN M. NORBY
COUNTY RECORDER

(reserved for recording data)

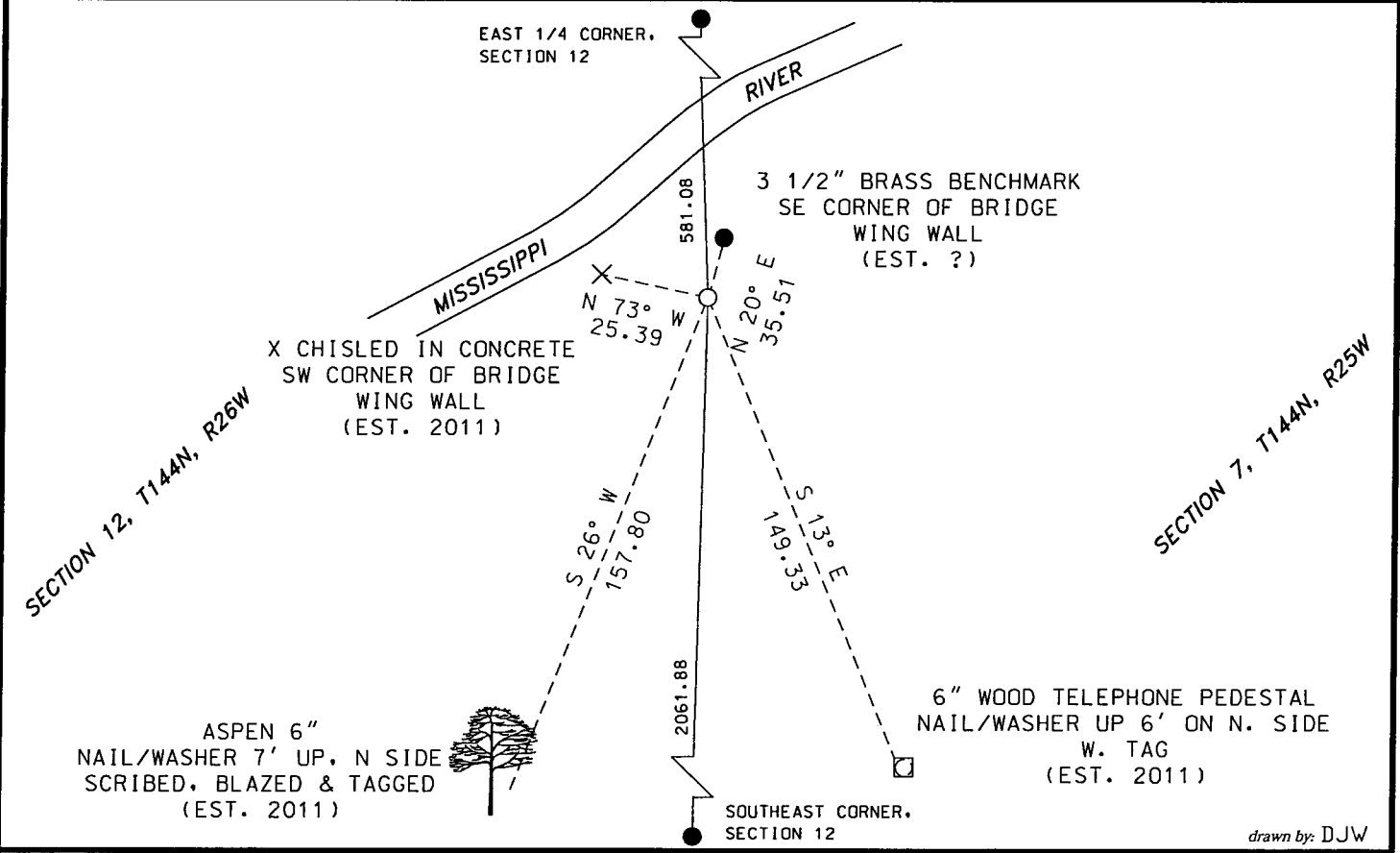
On August 2012, found a(n): 3/8" rebar 35" long buried in road approximately 9 feet below the surface.

- left monument as found
- lowered monument
- removed monument (explain)
- raised monument

On 5-01-2012, set a(n): 5/8" x 2' rebar with a cap, RLS No. 42656 directly above the recovered rebar 1/2" below the bituminous surface.

See "Statement of Evidence" for further details (on back)

GPS I.D.: _____ Co. Proj. No.: _____



drawn by: DJW

"SKETCH OF REFERENCE TIES"

(not to scale - bearings are magnetic)

Ties are measured to center of monument unless otherwise noted.

UNITS = Metric English

NAD 83 Latitude (N):	47° 18' 06.08842"
Longitude (W):	93° 54' 05.31494"
CCNZC 83 Northing:	281837.40
Easting:	578209.70
NAD 83 S.P. Northing:	1167646.077
(Central) Easting:	2711147.327

Dennis J. Warner
 signature
 Printed Name: Dennis J. Warner

5/10/2012
 date

License No. 42656

County Surveyor Land Surveyor

STATEMENT OF EVIDENCE: Meander corner (#14), east line of Section 12, on the south side of the Mississippi River, T144N, R26 West of the 5th Principal Meridian.

1873 This corner was established by P.H. Conger, Deputy Surveyor, in the township boundary survey. His notes indicate a post was placed at the corner and witnesses were established as follows:

White Oak 10" S50W 32 links (21.12 feet)

White Oak 12" N50E 8 links (5.28 feet)

1900 US Corps of Engineers found both trees standing with marks plainly visible. Information on file with the US Forest Service Office in Cass Lake.

1912 John Curo, Cass County surveyor, states that both MC's on the Mississippi are gone (Survey Record No. 211, Book A, 518).

1919 Cass County surveyor Flynn with the aid of Murphey, Robbie and Forsdick, state they "went back to the Mississippi River and to M.C. No. 14, the same being under a Bi-County Bridge now under construction, said post no. 14 now is an iron pipe 4" in diameter, placed at this point some 15 years since by some Federal engineers in the capacity of determining the various water and contour conditions of the upper Mississippi River." On file with the Cass County Surveyors Office, Survey Record No. 415, Book C, page 178.

2011 Cass County Survey Office personnel excavated near the approximate area of the corner south of the Mississippi and recovered a bent 35" rebar about 9 feet below the surface of the road.

2011 Personnel from Short Elliott Hendrickson searched extensively for the evidence of the corner and accessories, but other than the 35" rebar, none were found. A new monument was placed directly above the recovered rebar. New witnesses were made as shown on the face of this certificate.
An analysis of the record information and field evidence supports this monument as the best evidence of the corner position.