

CERTIFICATE OF LOCATION OF GOVERNMENT CORNER

Meander (#12) Corner of Section 24
 Township 145 N, Range 27 W, 5th P.M.
 STATE OF MINNESOTA, COUNTY OF CASS.

A000581295
OFFICE OF COUNTY RECORDER
CASS COUNTY MINNESOTA
CERTIFIED, FILED, AND/OR
RECORDED ON
06/12/2012 11:25:33 AM
AS DOC #: A000581295
PAGES: 2 REC FEES: 0.00
KATHRYN M. NORBY
COUNTY RECORDER

037291
 Tx: 4026798

On _____, found a(n): _____
DATE

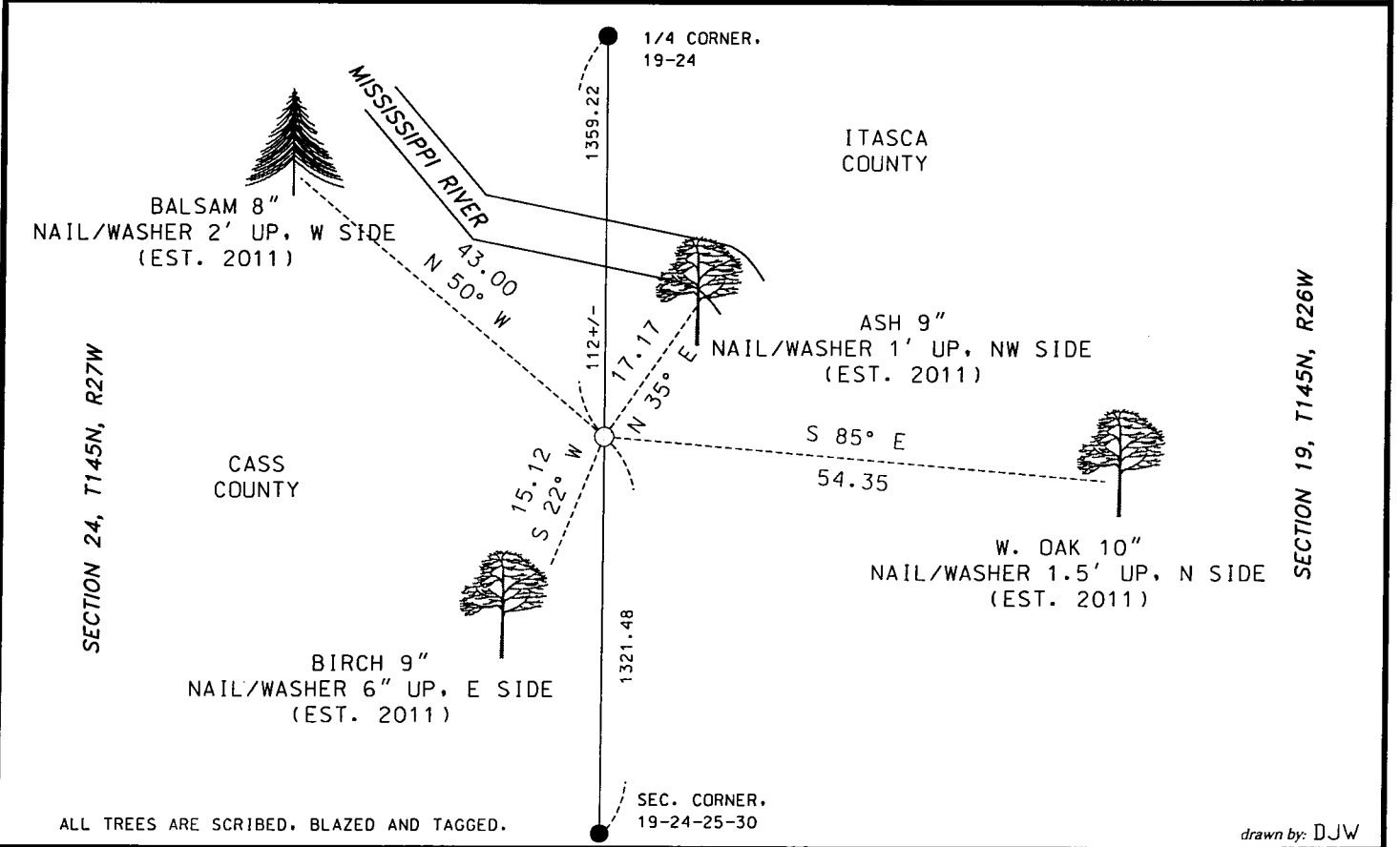
- left monument as found
- lowered monument
- removed monument (explain)
- raised monument

On 3-30-2011, set a(n): 2 1/2" x 3' Aluminum pipe with
a 3 1/4" Aluminum cap. (magnet in cap), 0.5 feet above ground with a 4'
steel fence post 1' north of the monument.

(reserved for recording data)

See "Statement of Evidence" for further details (on back)

GPS I.D.: _____ Co. Proj. No.: _____

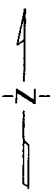


ALL TREES ARE SCRIBED, BLAZED AND TAGGED.

drawn by: DJW

"SKETCH OF REFERENCE TIES"

(not to scale - bearings are magnetic)



Ties are measured to center of monument unless otherwise noted.

UNITS = Metric English

NAD 83 Latitude (N):	47° 21' 28.77114"
Longitude (W):	94° 01' 57.11619"
CCNZC 83 Northing:	302270.84
Easting:	545638.44
NAD 83 S.P. Northing:	1188067.24
(Central) Easting:	2678568.14

Dennis J. Warner
 signature
 Printed Name: Dennis J. Warner

5/10/2012
 date

License No. 42656

County Surveyor Land Surveyor

STATEMENT OF EVIDENCE: Meander Corner (#12) between Sections 19 and 24, T145N, R26-R27 West of the 5th Principal Meridian.

1873 This corner was established by P.H. Conger, Deputy Surveyor, in the township boundary survey. His notes indicate a post was placed at the meander corner between sections 19 and 24, and established witnesses as follows:

Pine	8"	S27E	42 links	(27.72 feet)
Pine	10"	S34W	59 links	(38.94 feet)

2011 Personnel from Short Elliott Hendrickson searched extensively for the evidence of the meander corner and accessories, but none were found. The meander corner was placed using single proportionate methods on line between the Quarter corner common to Sections 19 and 24, and the Section corner common to Sections 19-24-25-30 pro-rated at the Government distance. Witness were made as shown on the face of this Certificate.

An analysis of the record information and field evidence supports this monument as the best evidence of the corner position.