



8 0 3 7 2 8 2

Tx:4026798

A000581286

**OFFICE OF COUNTY RECORDER
CASS COUNTY MINNESOTA
CERTIFIED, FILED, AND/OR
RECORDED ON**

06/12/2012 11:25:24 AM

AS DOC #: A000581286

PAGES: 2 REC FEES: 0.00

**KATHRYN M. NORBY
COUNTY RECORDER**

Index No. C-5

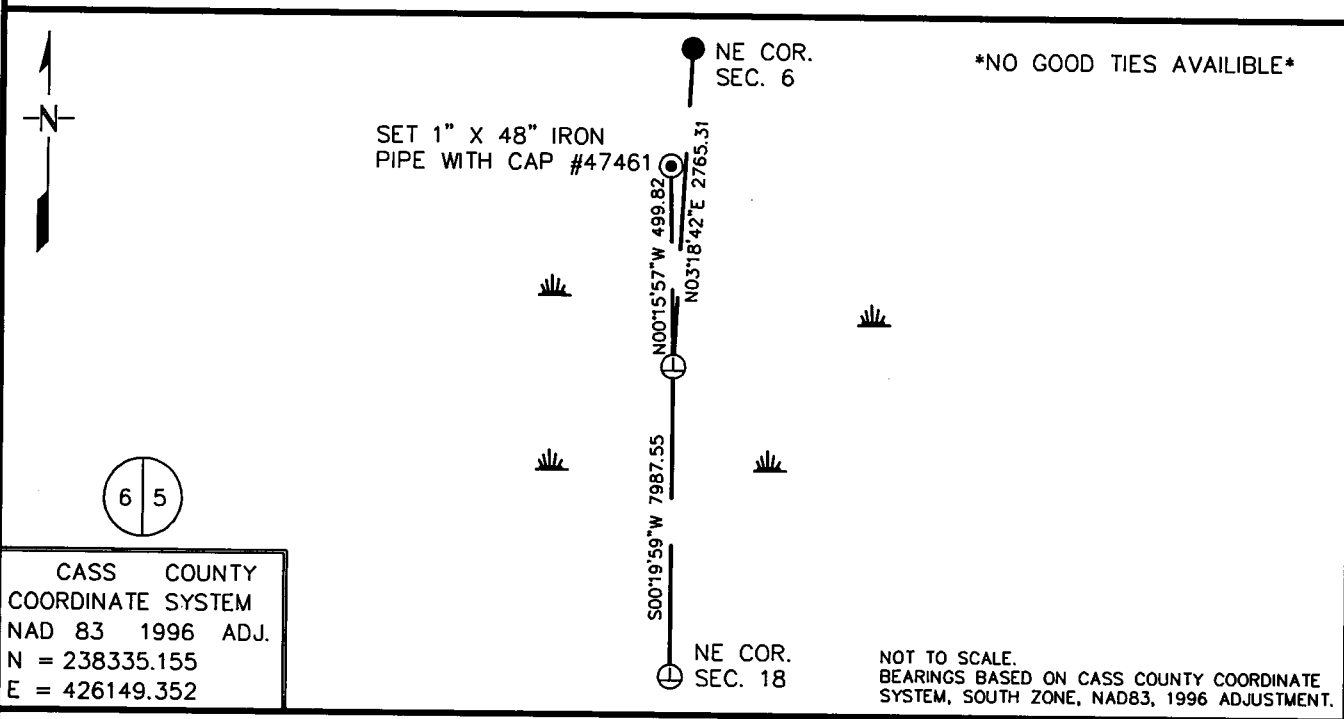
CERTIFICATE OF LOCATION OF GOVERNMENT CORNER

EAST QUARTER Corner of Section 6, Township 135, Range 32

5TH Principal Meridian, State of Minnesota, County of CASS

At the corner location shown on the sketch:

- On _____ found a _____
DATE
- left monument as found, lowered monument, removed monument (explain)
- On 3/29/12 Placed a 6' STEEL "T" STYLE FENCE POST UP 2' IN MARSH
DATE



CASS COUNTY
COORDINATE SYSTEM
NAD 83 1996 ADJ.
N = 238335.155
E = 426149.352

NOT TO SCALE.
BEARINGS BASED ON CASS COUNTY COORDINATE
SYSTEM, SOUTH ZONE, NAD83, 1996 ADJUSTMENT.

Statement of evidence for this corner location is on back of this page.

RAL APRIL 2012
WMA01870.00.00.01

I certify that this document was researched and prepared by me or under my direct supervision.

SIGNATURE *Kathryn M. Norby* DATE 5/15/12 License Number 47461

Title: Land Surveyor County Surveyor

STATEMENT OF EVIDENCE

East Quarter Corner of Section 6, Township 135 North, Range 32 West, 5th P.M.

The Department of Natural Resources, Division of Lands and Minerals, contacted the following offices for information regarding this corner:

MN History Center
 Wadena County Highway Dept.
 Cass County Surveyor
 Wadena County Recorder
 Nyberg Surveying
 Roy A. Smith, Land Surveyor

1866 The US General Land Office field notes, on file in the History Center, show this corner to be marked with a post and the following bearing trees:

Tamarac	12"	N 2° W	4 links
Tamarac	18"	S 80° E	18 links

1962 The DNR surveyed Dry Sand Lake Wildlife Management Area in section 6. The field notes indicate that a "very old fence corner" was found and accepted as the location of the east quarter corner of section 6. A distance of 2765.8 feet was measured from the northeast corner of section 6 to the fence corner and an angle of 87°14' was measured at the northeast corner of the section from the north line of the section to the fence corner.

2012 In March, the DNR survey crew computed a search location for the corner using the 1962 DNR survey information. Using a magnetic locator, the crew located fence remnants below the surface in a marsh in the vicinity of the search location. Other evidence of the corner was searched for but nothing was found. The fence remnants and were considered to be the best available evidence of the corner and accepted as the corner location. An iron monument was set at the corner location as shown on the face of this certificate.

For information on our survey in this area, please contact the MN DNR, Division of Lands and Minerals, Survey Section, 1601 Minnesota Drive, Brainerd, MN 56401