



8 0 3 7 2 8 1  
Tx:4026798

**A000581285**

**OFFICE OF COUNTY RECORDER  
CASS COUNTY MINNESOTA  
CERTIFIED, FILED, AND/OR  
RECORDED ON  
06/12/2012 11:25:23 AM  
AS DOC #: A000581285  
PAGES: 2 REC FEES: 0.00  
KATHRYN M. NORBY  
COUNTY RECORDER**

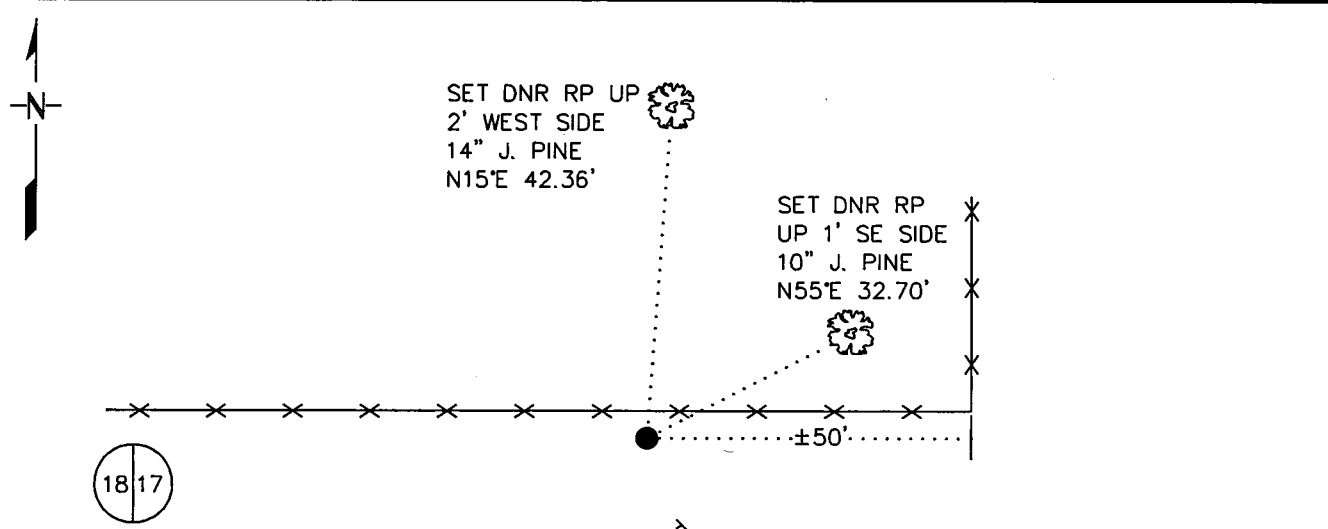
Index No.                      L-5

# CERTIFICATE OF LOCATION OF GOVERNMENT CORNER

                     EAST QUARTER Corner of Section            18           , Township            135           , Range            32  
           5TH Principal Meridian, State of Minnesota, County of                      CASS

At the corner location shown on the sketch:

- On            3/14/12            found a            1" X 36" IRON PIPE BETWEEN TWO 3/4" X 36" IRON PIPES DOWN 1.4'  
DATE
- left monument as found,      □ lowered monument,      □ removed monument (explain)
- On            3/14/12            Placed a            3/4" X 24" REBAR WITH PLASTIC CAP STAMPED "MN DNR LS 47461"  
DATE
- INSIDE FOUND 1" IRON PIPE UP 0.4' WITH STEEL POST ON NORTH SIDE, 8' SOUTH OF FENCE



CASS COUNTY  
COORDINATE SYSTEM  
NAD 83 1996 ADJ.  
N = 227685.935  
E = 426208.075

NOT TO SCALE.  
BEARINGS OBSERVED WITH COMPASS.

Statement of evidence for this corner location is on back of this page.      RAL APRIL 2012  
WMA01870.00.00.01

I certify that this document was researched and prepared by me or under my direct supervision.

SIGNATURE                      DATE            5/15/12 License Number            47461

Title:      ■ Land Surveyor      □ County Surveyor

STATEMENT OF EVIDENCE**East Quarter Corner of Section 18, Township 135 North, Range 32 West, 5<sup>th</sup> P.M.**

The Department of Natural Resources, Division of Lands and Minerals, contacted the following offices for information regarding this corner:

MN History Center  
 Wadena County Highway Dept.  
 Cass County Surveyor  
 Wadena County Recorder  
 Nyberg Surveying  
 Roy A. Smith, Land Surveyor

1866 The US General Land Office field notes, on file in the History Center, show this corner to be marked with a post and the following bearing trees:

Black Pine	5"	S 34° W	54 links (35.64')
Black Pine	6"	S 86° E	109 links (71.94')

1902 Cass County Land Corner Record indicates a W. H. Poore township road order that shows a survey.

1920 County Book "C" page 368, on file at the Cass County Surveyor's office, indicates that E.B. Horst, Cass County Engineer, and Lincoln Mackey, assistant, found old BT's and set an iron monument and took new ties:

Jack Pine	10"	S 38°48' E	66.9'
Jack Pine	14"	N 27°56' W	43.0'

A distance of 2620.9' was measured to the southeast corner of section 18.

1939 Air photos on file with the DNR show an east-west road running from the center of section 17 to the center of section 18.

2012 In February, the DNR survey crew searched for evidence of the corner and located a fence corner of fences north and west. Using the 1920 information, a search area was computed west of the fence corner. In March, the DNR made another search for the corner and found a 1" x 36" iron pipe with two 3/4" pipes on either side 1.4' below the surface and +/-50' west of the fence corner. No other evidence of the corner was recovered. The 1" iron pipe was accepted as a perpetuation of the corner location and ties were taken.

Northeast Corner of Section 18 bears N02°15'45"W 2663.88'

Southeast Corner of Section 18 bears S02°01'59"W 2620.83'

For information on our survey in this area, please contact the MN DNR, Division of Lands and Minerals, Survey Section, 1601 Minnesota Drive, Brainerd, MN 56401