



8 0 3 7 2 7 8

Tx:4026798

A000581282

**OFFICE OF COUNTY RECORDER
CASS COUNTY MINNESOTA
CERTIFIED, FILED, AND/OR
RECORDED ON
06/12/2012 11:25:20 AM
AS DOC #: A000581282
PAGES: 2 REC FEES: 0.00
KATHRYN M. NORBY
COUNTY RECORDER**

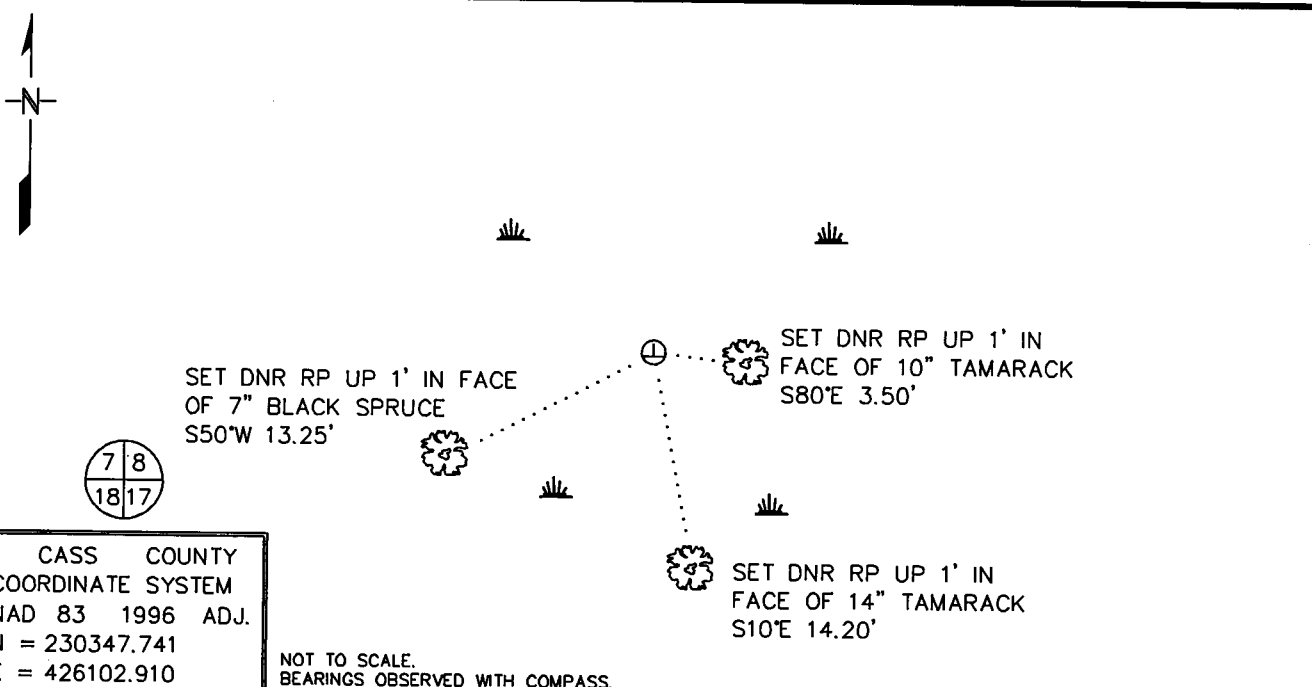
Index No. J-5

CERTIFICATE OF LOCATION OF GOVERNMENT CORNER

NORTHEAST Corner of Section 18, Township 135, Range 32
5TH Principal Meridian, State of Minnesota, County of CASS

At the corner location shown on the sketch:

- On _____ found a _____
DATE
- left monument as found, lowered monument, removed monument (explain)
- On 4/10/12 Placed a 4' "T" STYLE STEEL POST UP 1' IN TAMARACK & SPRUCE SWAMP
DATE



CASS COUNTY
COORDINATE SYSTEM
NAD 83 1996 ADJ.
N = 230347.741
E = 426102.910

NOT TO SCALE.
BEARINGS OBSERVED WITH COMPASS.

Statement of evidence for this corner location is on back of this page.

RAL APRIL 2012
WMA01870.00.00.01

I certify that this document was researched and prepared by me or under my direct supervision.

SIGNATURE *Robert...* DATE 5/15/12 License Number 47461

Title: Land Surveyor County Surveyor

STATEMENT OF EVIDENCE

Northeast Corner of Section 18, Township 135 North, Range 32 West, 5th P.M.

The Department of Natural Resources, Division of Lands and Minerals, contacted the following offices for information regarding this corner:

- MN History Center
- Wadena County Highway Dept.
- Cass County Surveyor
- Wadena County Recorder
- Nyberg Surveying

1866 The US General Land Office field notes, on file in the History Center, show this corner to be marked with a post and the following bearing trees:

Tamarac	5"	N 54° W	4 links (2.64')
Tamarac	4"	S 47° E	29 links (19.14')
Spruce	4"	N 67 3/4° E	12 links (7.92')
Spruce	4"	S 52° W	30 links (19.8')

2012 In February, the DNR survey crew searched for evidence of the corner. The survey crew located swamp edges to the south and east in the vicinity of the corner location. No other evidence of the corner was recovered. In April, the DNR again searched for evidence of the corner but found nothing. The corner was computed by the double proportion method using the east quarter corner of section 6, the northeast corner of section 17, the east quarter corner of section 18 and the north quarter corner of section 18. This position fit the GLO swamp calls to the south and east very well. An iron monument was set at the computed position to mark the corner location as shown on the face of this document.

- East Quarter Corner of Section 6 bears N00°19'59"E 7987.55'
- Northeast Corner of Section 17 bears N89°23'20"E 5289.51'
- East Quarter Corner of Section 18 bears S02°15'45"E 2663.88'
- North Quarter Corner of Section 18 bears N89°01'26"W 2657.46'

For information on our survey in this area, please contact the MN DNR, Division of Lands and Minerals, Survey Section, 1601 Minnesota Drive, Brainerd, MN 56401