

CERTIFICATE OF LOCATION OF GOVERNMENT CORNER

NORTH QUARTER Corner of Section 34, Township 135 N, Range 32 W

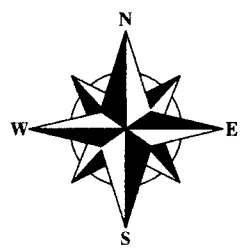
5TH Principal Meridian, State of Minnesota, County of CASS

At the corner location shown on the sketch:

On _____ found a _____
DATE

left monument as found, lowered monument, removed monument (explain)

On 5-3-11 Placed a 1/2 x 14 INCH IRON PIPE MARKED WITH RLS CAP 17768
DATE
1 INCH ABOVE GROUND



NOT TO SCALE
MAGNETIC DECLINATION 6'E

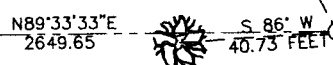
SKETCH OF REFERENCE TIES

SECTION 27

6" INCH BURR OAK
SET SPIKE IN SOUTHWEST FACE
MARKED WITH BLAZING

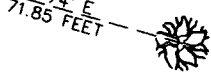


NW COR.
SEC. 34, T. 135N. R. 32W
CASS COUNTY, MN



10" INCH BURR OAK
SET SPIKE IN NORTHWEST FACE
MARKED WITH BLAZING

SOUTH LINE OF SECTION 27
NORTH LINE OF SECTION 34



6" INCH BIRCH
SET SPIKE IN NORTHEAST FACE
MARKED WITH BLAZING

NE COR.
SEC. 34, T. 135N. R. 32W
CASS COUNTY, MN

CLEAR-CUT

SECTION 34

BEARINGS ARE BASED ON
CASS COUNTY COORDINATE SYSTEM,
SOUTH ZONE. NAD 83 1996 ADJ.

CASS COUNTY
COORDINATE SYSTEM - SOUTH ZONE
NAD 83 1996 ADJ.
N = 214565.81
E = 439522.27

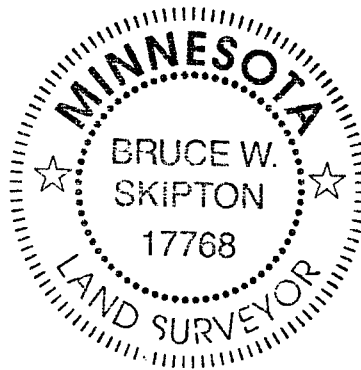
Statement of evidence relative to this corner location is on back of page.

I hereby certify that this document and the data contained herein was prepared by me or under my direct supervision.
Don W. Shaw 3/1/2012
Signature Date
License No. 17768
 Land Surveyor Professional Engineer
 County Surveyor County Engineer

OFFICE OF THE COUNTY RECORDER
County of CASS
I hereby certify that this document was filed in the County Recorders office at _____ M. on the _____ day of _____ A.D., 20____
County Recorder _____
By _____, Deputy
DOCUMENT NO. _____

North Quarter Corner, Section 34, Township 135 North, Range 32, Cass County, MN

- 1866 Oscar E. Garrison, GLO Deputy Surveyor, set post with two bearing trees for this corner. Reference ties: 8 inch Black Pine S 5 degrees East .20 chains; 6 inch Black Pine N 33 degrees East .20 chains.
- 5/2011 Arro Land Surveyors search the area for the GLO reference ties and post and found nothing. There was no visible occupation.
- 5/2011 Arro Land Surveyors has determined the position of for this PLS corner to be lost due to the lack of any evidence to relocate its location. We placed an ½ inch iron pipe 14 inches long with RLS 17768 plastic cap at the lost position being on line and midway between the Southeast corner and the Southwest corner of said Section 27.



A000578694
OFFICE OF COUNTY RECORDER
CASS COUNTY MINNESOTA
CERTIFIED, FILED, AND/OR
RECORDED ON
03/15/2012 10:27:23 AM
AS DOC #: A000578694
PAGES: 2 REC FEES: 0.00
KATHRYN M. NORBY
COUNTY RECORDER