

CERTIFICATE OF LOCATION OF GOVERNMENT CORNER

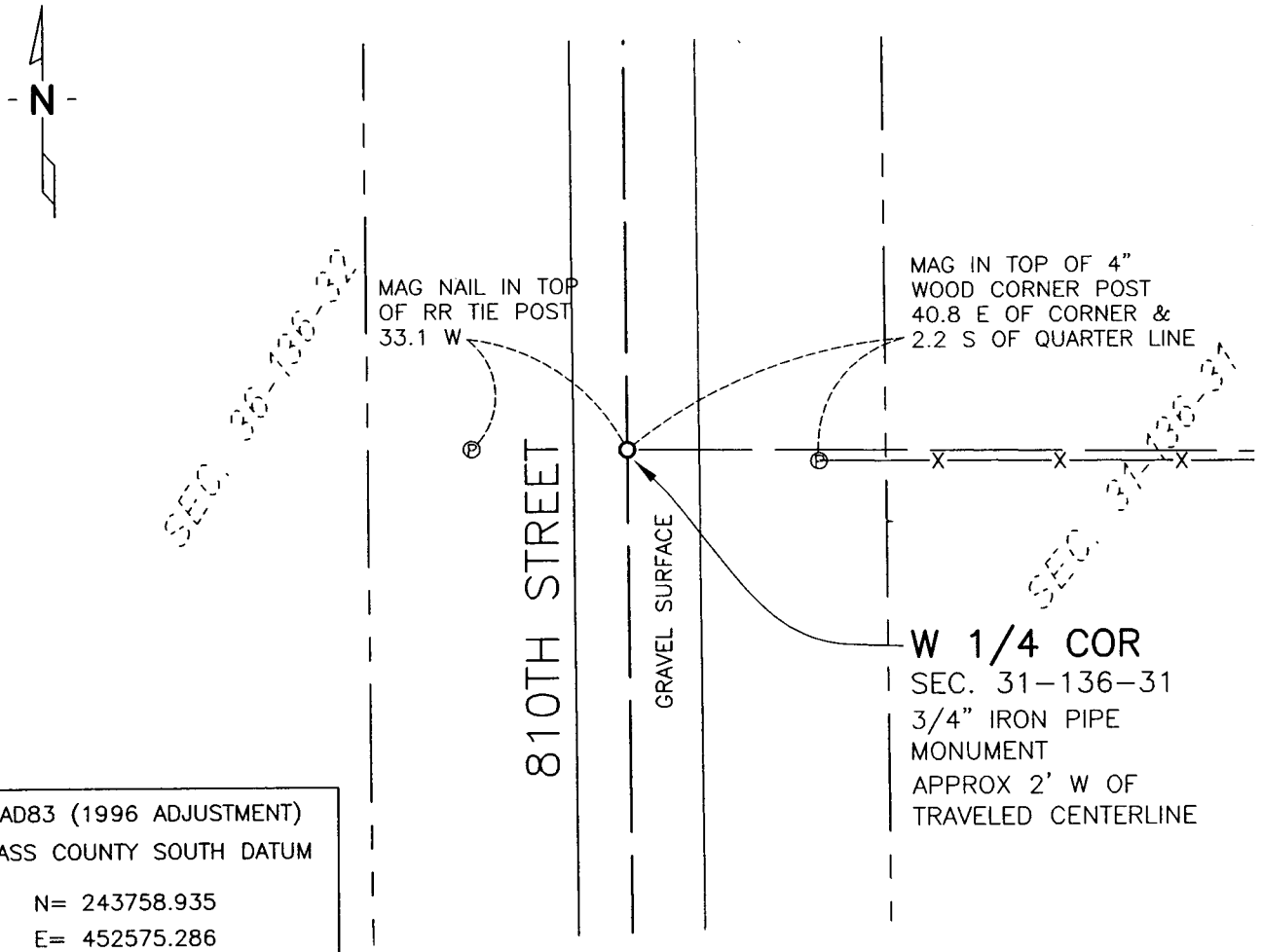
WEST QUARTER Corner of Section 31, Township 136 N, Range 31 W, 5th P.M.

STATE OF MINNESOTA, County of CASS

At the corner location shown on the sketch:

- On 5/17/11 found a NOTHING
DATE
- left monument as found, lowered monument, removed monument (explain)
- On 5/17/11 placed a 3/4" IRON PIPE MONUMENT MIDDWAY AND ONLINE
DATE
BETWEEN THE NW AND SW CORNERS OF SECTION

SKETCH OF REFERENCE TIES



NAD83 (1996 ADJUSTMENT)
CASS COUNTY SOUTH DATUM

N= 243758.935
E= 452575.286

Statement of evidence relative to this corner location is on back of page.

I hereby certify that this document and the data contained herein was prepared by me or under my direct supervision.

Rory Jensen _____ DATE 10/12/2011
Rory Jensen

Registration No. 19789

- Land surveyor, County Surveyor,

MISC 1014 PG.33
I:\CASS\CERTS\2011\W4-31-136-31.DWG



Statement of Evidence:

West Quarter Corner of Section 31, Township 136 North, Range 31 West

- 1870 Deputy Surveyor, Richard Cronk subdivided the township and set a section stake at the corner.
- 1916 A hub was set proportionally with the following ties:
5" Oak - N57°E 25.30'
10 Oak - S10°E 77'
- 1923 John Greene resurveyed County an "I.M." was set.
- 1925 Greene found "I.M." and set new ties:
5" Oak - N48°E 25.3'
6" Oak - S75°E 51.0'
- 2011 On May 17th, a Bolton & Menk Inc survey crew searched for this corner. The survey crew found nothing. A 3/4" iron pipe was set midway and online between the NW and SW corner of the section.

A000578683
OFFICE OF COUNTY RECORDER
CASS COUNTY MINNESOTA
CERTIFIED, FILED, AND/OR
RECORDED ON
03/15/2012 10:27:12 AM
AS DOC #: A000578683
PAGES: 2 REC FEES: 0.00
KATHRYN M. NORBY
COUNTY RECORDER