

# CERTIFICATE OF LOCATION OF GOVERNMENT CORNER

East Quarter corner of Section 13, Township 145 N., Range 29 W., 5th P.M.  
State of Minnesota, County of Cass

At the corner location shown on the sketch:

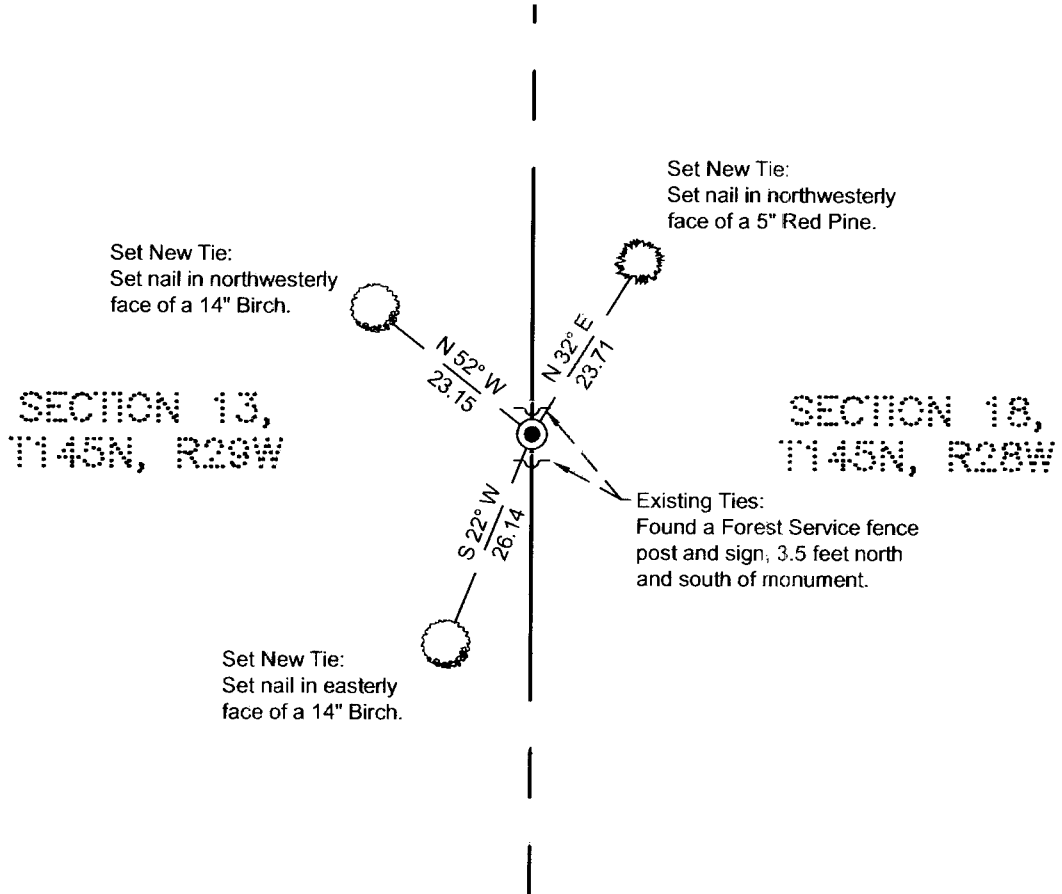
On 06-02-2011 found a 2.5" iron pipe with a 3" diameter brass cap,  
16" above the surface grade.

left monument as found     lowered monument     removed monument (explain)

On \_\_\_\_\_ placed \_\_\_\_\_



## SKETCH OF REFERENCE TIES (NOT TO SCALE)



NOTE: All bearings are true.

Statement of evidence relative to this corner location is on the back of this page.

I hereby certify that this survey, plan, or report was prepared by me or under my direct supervision and that I am a duly Licensed land Surveyor under the laws of the State of Minnesota. I further certify that this United States public land survey monument record is correct and complete to the best of my knowledge and belief.

Terry L. Freeman, Land Surveyor

Date 12/13/11

MN License No. 21367

**A000578285**  
**OFFICE OF COUNTY RECORDER**  
**CASS COUNTY MINNESOTA**  
**CERTIFIED, FILED, AND/OR**  
**RECORDED ON**  
**03/01/2012 2:29:21 PM**  
**AS DOC #: A000578285**  
**PAGES: 2 REC FEES: 0.00**  
**KATHRYN M. NORBY**  
**COUNTY RECORDER**

Index No.   L.0 - 25.0  

**STATEMENT ON EVIDENCE**

**East Quarter Corner of Section 13, Township 145 North, Range 29 West of the 5th Principal Meridian.**

In 1873, P.H. Conger, U.S. Deputy Surveyor, set a wood post in place to mark the location of this corner and established bearing trees as follows: an 8" Jack Pine, West 60 links; a 20" Norway Pine, N84-1/2"E 4 links.

1900 and 1903, U.S. Army Corp of Engineers maps for the Leech Lake and Lake Winnibigoshish Reservoirs show corner found by surveyors Horace Dunaway, T. Milton Fowble, and W.C. Lemen. A copy of the map is on file in the Cass County Survey Department.

In 1955, Survey by Harold Curo in Section 18-145-28 (Curo Bk 270, Pg. 147-158) shows that Harold re-established 1/4 corner from old John Curo survey from 1946. He set an 1-1/2x36" iron pipe and marked BT's: a 14" Jack Pine, S1°W 11.6 feet and an 8" Jack Pine, East 4.95 feet.

In 1958, Pete Meyer, U.S.F.S. surveyor found iron and 1955 ties, set 2x60" iron pipe with a 3" bronze cap, an 8" White Oak, S22°E 44.5 feet; a 7" Red Oak, N47-1/2"E 49.5 feet; and a 9" Jack Pine, N6°E 39.8 feet. Information in U.S.F.S. Cass Lake office T145N R29W Book 1, Pg. 10.

In 1978, Okerman, U.S.F.S. surveyor found the 1958 monument and set the South 1/16 corner by cadastral survey. information on file in the USFS Cass Lake Office T145N R28W Book 1, page 24.

In 1979, MN D.N.R. Engineering office survey found the brass cap pipe. Worksheet on file in Cass County Surveyors office.

In 2004, Landecker & Associates, Inc. plats JUDD'S WEST WINNIE and shows brass cap found at corner. Recorded Sept. 30, 2004 as Doc #T000022932.

On June 2, 2011, a Northern Engineering & Consulting survey crew found a 2-1/2" iron pipe with a 3" diameter brass cap, 16" above the surface grade. Two U.S.F.S. fence posts and signs were found 3.5 feet north and south. Three new ties were set as shown on the front page of this certificate. Found brass cap monument is accepted as corner position established by John Curo in 1946 and perpetuated by the USFS and the MN DNR.

**Minnesota State Plane (Central Zone)**

Northing 1195108.428  
Easting 2615014.936

**County Coordinates (Cass County North)**

Northing 309338.097  
Easting 482089.032

