

CERTIFICATE OF LOCATION OF GOVERNMENT CORNER

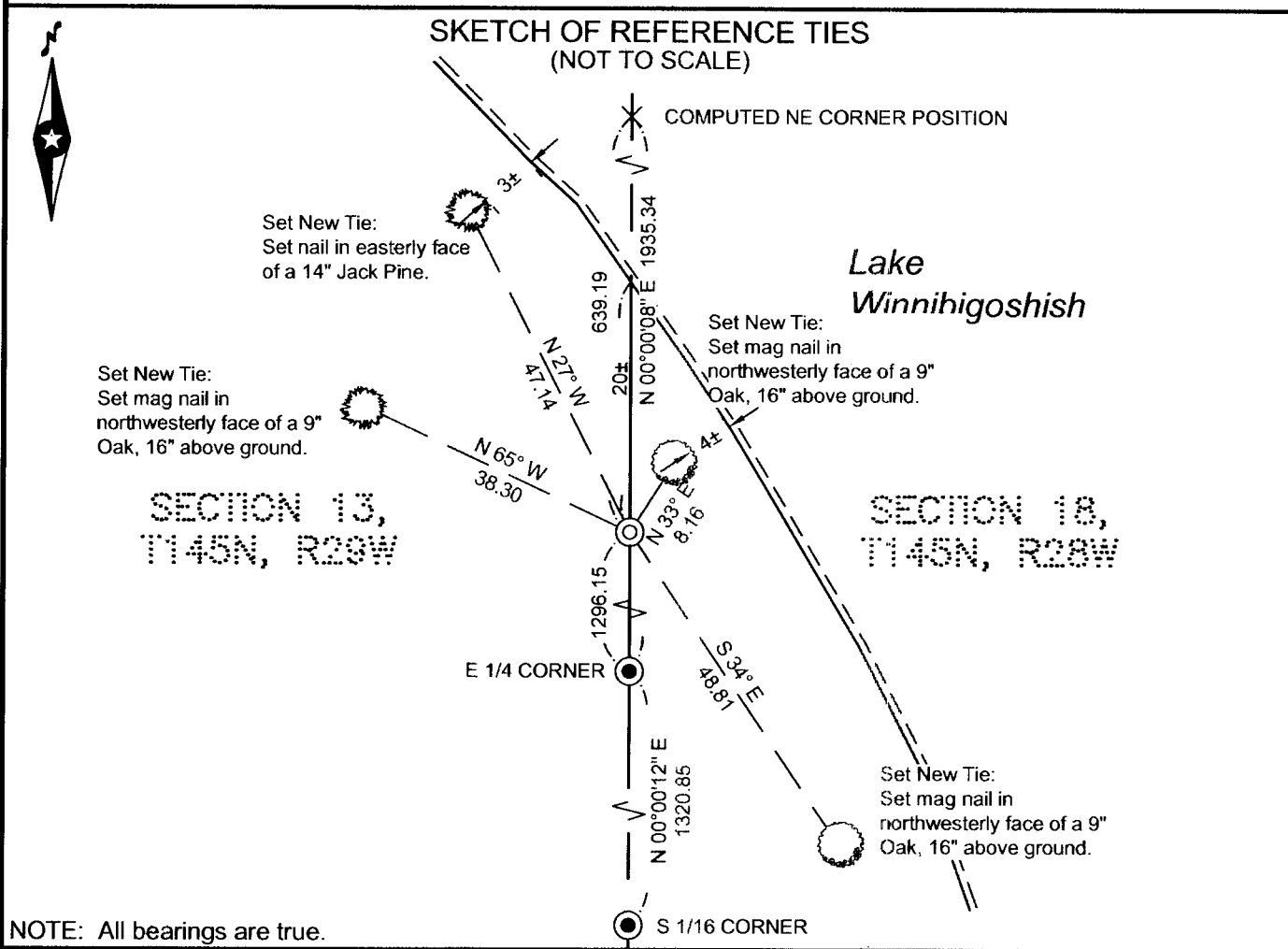
WC to northeast corner of Section 13, Township 145 N., Range 29 W., 5th P.M.
 State of Minnesota, County of Cass

At the corner location shown on the sketch:

On _____ found _____

- left monument as found lowered monument removed monument (explain)

On 06-14-2011 placed _____ a 0.5" rebar, 2 foot long, with a 3.5" diameter brass cap,
 flush with the surface grade.



Statement of evidence relative to this corner location is on the back of this page.

I hereby certify that this survey, plan, or report was prepared by me or under my direct supervision and that I am a duly Licensed land Surveyor under the laws of the State of Minnesota. I further certify that this United States public land survey monument record is correct and complete to the best of my knowledge and belief.


 Terry L. Freeman, Land Surveyor

Date 2/28/12 MN License No. 21367

A000578284
OFFICE OF COUNTY RECORDER
CASS COUNTY MINNESOTA
CERTIFIED, FILED, AND/OR
RECORDED ON
03/01/2012 2:29:20 PM
AS DOC #: A000578284
PAGES: 2 REC FEES: 0.00
KATHRYN M. NORBY
COUNTY RECORDER

Index No. J.6 - 25.0

STATEMENT ON EVIDENCE

WC to Northeast corner of Section 13, Township 145 North, Range 29 West of the 5th Principal Meridian.

In 1873, P.H. Conger, U.S. Deputy Surveyor set a wood post in place to mark the location of this corner and established bearing trees as follows: a 10" Cedar, N55°E 33 links; a 4" Tamarack, N18°W 12 links; a 6" Tamarack, S61-1/2°W 10 links; and a 5" Tamarack, S59-1/2°E 14 links.

1900 and 1903, U.S. Army Corp of Engineers maps for the Leech Lake and Lake Winnibigoshish Reservoirs shows corner found by Surveyors Horace Dunaway, T. Milton Fowble, and W.C. Lemen. A copy of the map is on file in the Cass County Survey Department.

In 1979, Minnesota Department of Natural Resources Engineering Department survey in Section 18-145-28 shows a computed position for the corner in the lake, based on Corp of Engineers. Information on file in Cass County Surveyors office.

On June 14, 2011, a Northern Engineering & Consulting survey crew located the S1/16 Corner and East Quarter Corner of Section 13 as located by the DNR in 1979. They then calculated the line between the E1/4 Corner and the accepted computed position for the Northeast Corner in the lake per the DNR survey and set a 1/2" rebar, 2 foot long, with a 3-1/2" diameter brass cap, flush with the surface grade as a witness to the section corner. Four ties were established as shown on the front page of this certificate.

Minnesota State Plane (Central Zone)

Northing 1196404.598
Easting 2615014.417

County Coordinates (Cass County North)

Northing 310634.246
Easting 482089.074

