

CERTIFICATE OF LOCATION OF GOVERNMENT CORNER

I hereby certify that this survey, plan, or report was prepared by me or under my direct supervision and that I am a duly Licensed Land Surveyor under the laws of the State of Minnesota.

Patrick A. Trottier

 Patrick A. Trottier

Date: 2-14-2011 License No: 41002
 41002

A000568493
OFFICE OF COUNTY RECORDER
CASS COUNTY MINNESOTA
CERTIFIED, FILED, AND/OR
RECORDED ON
02/23/2011 07:53:21 AM
AS DOC #: A000568493
PAGES: 2 REC FEES: 0.00
KATHRYN M. NORBY
COUNTY RECORDER

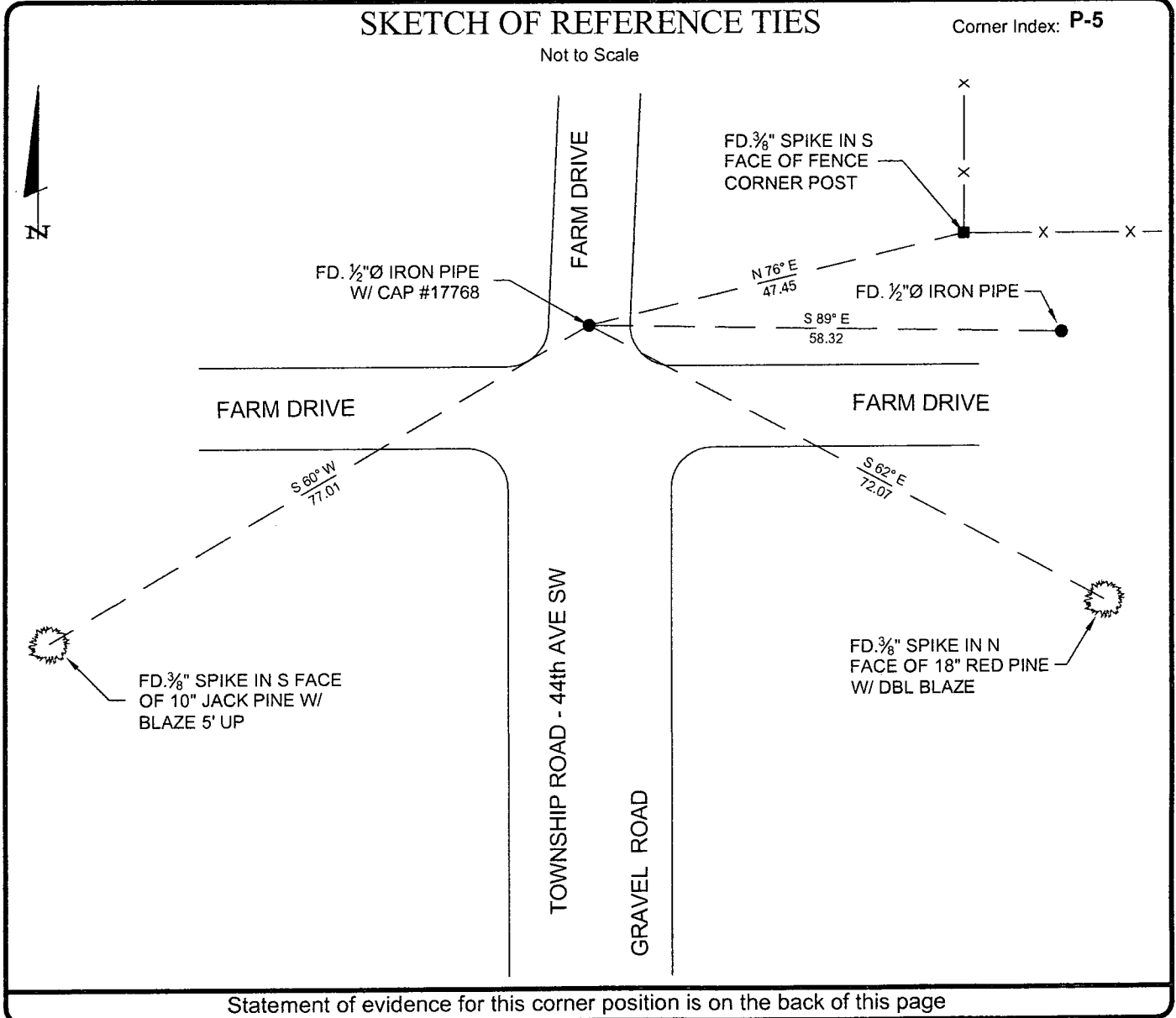


EAST QUARTER Corner of Section 19, Township 138, Range 30, 5th P.M.

On 11-22-2010 found a 1/2"Ø IRON PIPE W/ CAP#17768

left monument as found, lowered monument, removed monument (explain)

On _____ placed a _____



Statement of Evidence

**East quarter corner, Section 19, Township 138 North, Range 30 West,
5th Principal Meridian, Cass County, Minnesota**

1865 – Original U.S. Government Survey establishing this corner was performed. A wood post was set marking its location from which the following witnesses were established:

10" Bl. Pine	N 37° W	7 links
10" Bl. Pine	S 68° E	18 links

2005 – Bruce Grivna, RLS 17253, performed an extensive survey in Section 19. The NE corner of Section 19 was treated as a lost corner and its position established by double proportion method utilizing the found and accepted following corners, all in said Township: NW corner of Section 19, SE corner of Section 19, North quarter corner of Section 20, and the NE corner of Section 18. The East quarter corner of Section 19 was considered lost and then established by single proportion method using the NE and SE corners of Section 19. A ½" iron with plastic cap stamped "RLS 17253" was placed at the position.

2007 – Bruce W. Skipton, RLS 17768, performed a survey in Section 20 of said township. East quarter corner of 19 was treated as obliterated position with evidence of roadbed controlling latitude of corner position. A ½ pipe with cap stamped "RLS 17768" was set as corner on centerline. Pipe set by Grivna lies 58.32 east of Skipton pipe and is not referenced on face of Certificate of Survey signed by Skipton and dated 7-27-07.

2010 – Patrick Trottier, RLS 41002, finds in place both Skipton capped pipe and a ½" pipe without cap which matches position calculated and monumented by Grivna. Trottier agrees with Skipton position which used roadbed as position for obliterated corner. Skipton capped pipe lies equidistant from NE and SE corners of Section 19 at centerline of road. The ½" capped pipe with plastic cap stamped "RLS 17768" is accepted as perpetuation of corner, from which the following witnesses were established:

10" Jack Pine	S 60° W	77.01 feet
18" Red Pine	S 62° E	72.07 feet
8" Wood Post	N 76° E	47.45 feet