

CERTIFICATE OF LOCATION OF GOVERNMENT CORNER

I hereby certify that this survey, plan, or report was prepared by me or under my direct supervision and that I am a duly Licensed Land Surveyor under the laws of the State of Minnesota.

Patrick A. Trottier

Patrick A. Trottier

Date: 2-14-2011 License No: 41002
41002

A000568491
OFFICE OF COUNTY RECORDER
CASS COUNTY MINNESOTA
CERTIFIED, FILED, AND/OR
RECORDED ON
02/23/2011 07:53:19 AM
AS DOC #: A000568491
PAGES: 2 REC FEES: 0.00
KATHRYN M. NORBY
COUNTY RECORDER

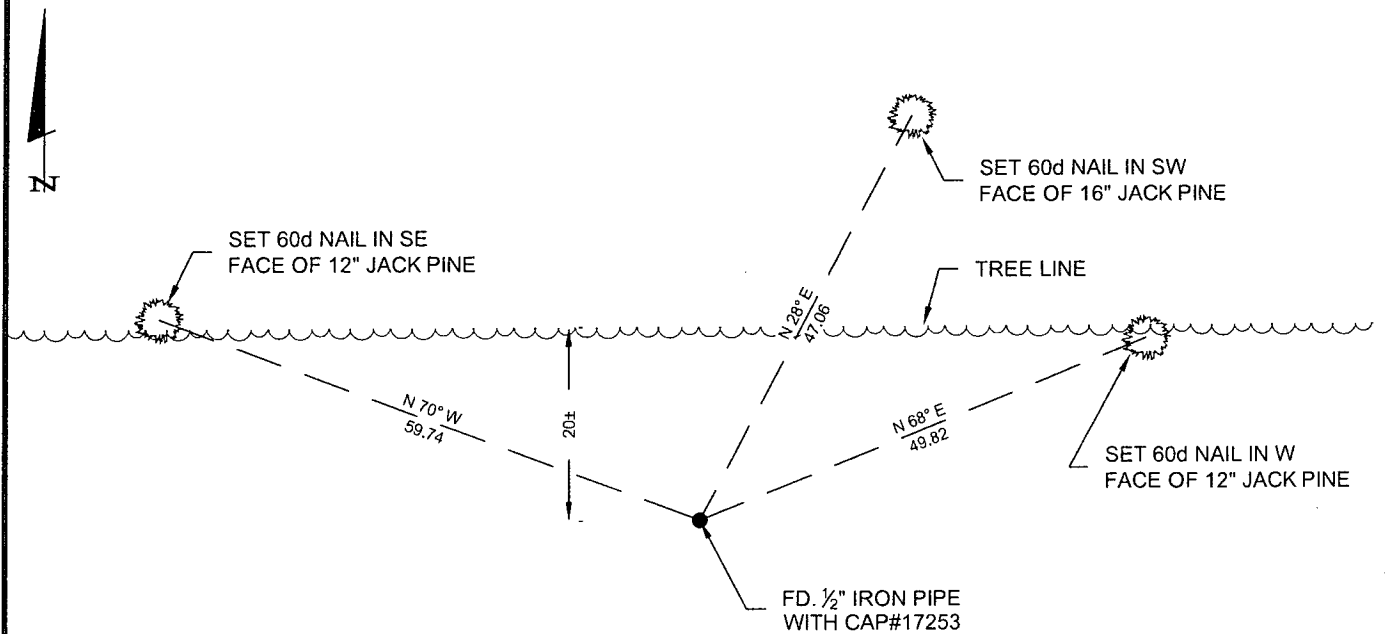
NORTH QUARTER Corner of Section 19, Township 138, Range 30, 5th P.M.

- On 11-29-2010 found a 1/2" Ø IRON PIPE WITH CAP #17253
- left monument as found,
 lowered monument,
 removed monument (explain)
- On _____ placed a _____

SKETCH OF REFERENCE TIES

Corner Index: **N-3**

Not to Scale



Statement of evidence for this corner position is on the back of this page



Statement of Evidence

**North quarter corner, Section 19, Township 138 North, Range
30 West, 5th Principal Meridian, Cass County, Minnesota**

1865 – Original U.S. Government Survey establishing this corner was performed. A wood post was set marking its location from which the following witnesses were established:

18" N. Pine	N 5° W	15 links
16" N. Pine	N 59° W	36 links

2005 – Bruce Grivna, RLS 17253, performed an extensive survey in Section 19. The NE corner of Section 19 was treated as a lost corner and its position established by double proportion method utilizing the found and accepted following corners, all in said Township: NW corner of Section 19, SE corner of Section 19, North quarter corner of Section 20, and the NE corner of Section 18. The North quarter corner of Section 19 was then established by single proportion method using the NW and NE corners of Section 19. A ½" iron with plastic cap stamped "RLS 17253" was placed at the position.

2010 – Patrick Trottier, PLS 41002, reviewed and agreed with the 2003 proration and accepted the ½" iron with plastic cap stamped "RLS 17253" set as North quarter corner of Section 19, from which the following witnesses were established:

12" Jack Pine	N 70° W	59.74 feet
16" Jack Pine	N 28° E	47.06 feet
12" Jack Pine	N 68° E	49.82 feet