

# CERTIFICATE OF LOCATION OF GOVERNMENT CORNER

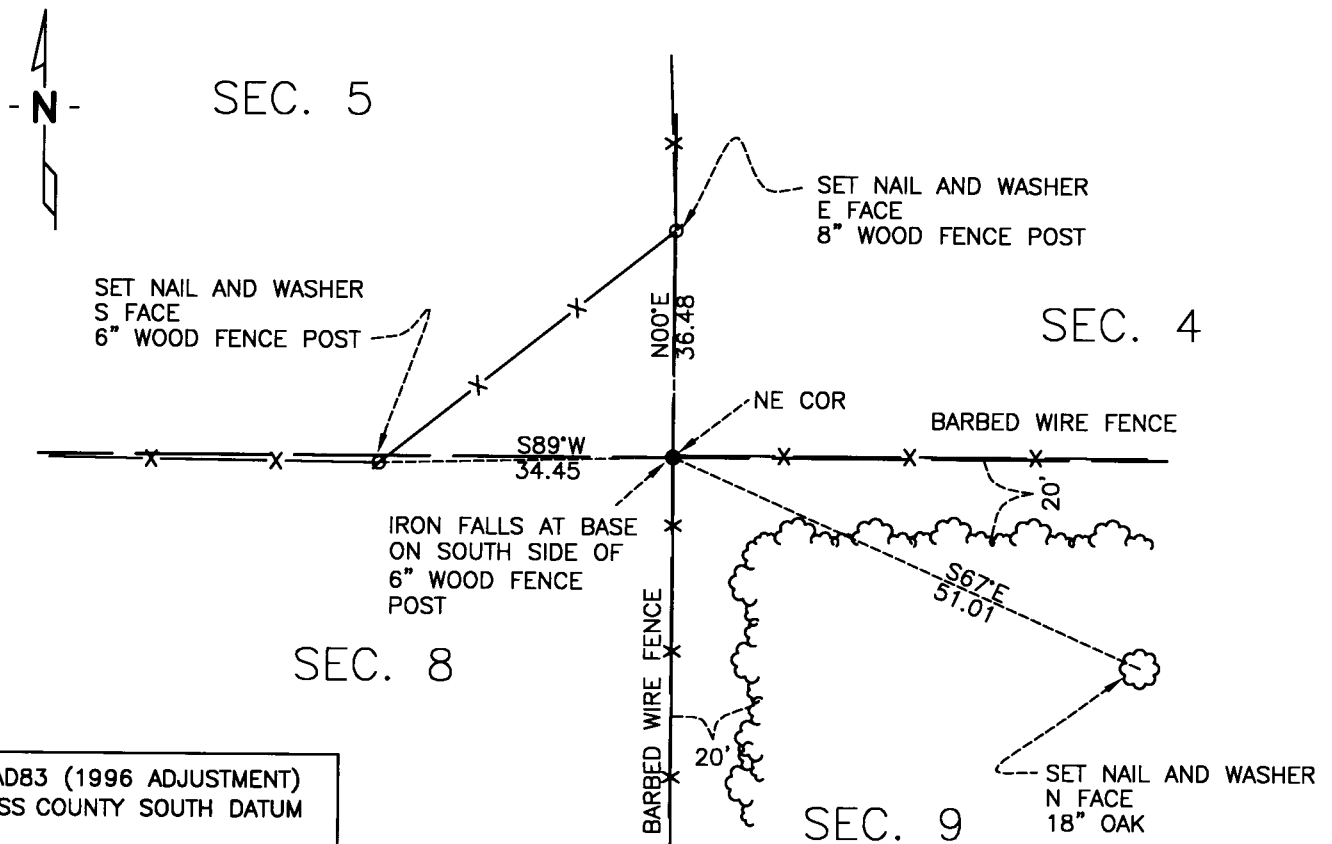
Northeast Corner of Section 8, Township 136, Range 30, 5th P.M.

STATE OF MINNESOTA, County of CASS

At the corner location shown on the sketch:

- On 11/02/10 found SPIKE UP 0.1'
- left monument as found,  lowered monument,  removed monument (explain)
- On \_\_\_\_\_ PLACED \_\_\_\_\_  
DATE

### SKETCH OF REFERENCE TIES



NAD83 (1996 ADJUSTMENT)  
CASS COUNTY SOUTH DATUM

N= 267,466.98700  
E= 497,286.08700

Statement of evidence relative to this corner location is on back of page.

I hereby certify that this document and the data contained herein was prepared by me or under my direct supervision.

*[Signature]*  
SURVEYOR 2/10/11  
DATE

Registration No. 44530

- Land surveyor,
- County Surveyor,

### OFFICE OF THE COUNTY RECORDER

County of \_\_\_\_\_

I hereby certify that this document was filed in the Co. Recorders office at \_\_\_\_M. on the \_\_\_\_\_ day of \_\_\_\_\_ A.D., 20\_\_\_\_

County Recorder \_\_\_\_\_

By \_\_\_\_\_, Deputy

DOCUMENT NO. \_\_\_\_\_



Statement of Evidence:**Northeast corner of Section 8, Township 136 North, Range 30 West**

Oct. 1870 R. Cronk, GLO Deputy Surveyor set a wood post for the original corner and referenced it as follows:

10" Spruce	S69°W	35 links (23.10 feet)
9" Aspen	N63°W	22 links (14.52 feet)
18" Aspen	S52°E	56 links (36.96 feet)
8" Maple	N62°E	45 links (29.70 feet)

June 1909 Township Road Order shows no survey.

Jan. 1917 E.B. Horst found an iron monument, Curo Book 64, Page 84.

1981 Myron Landecker surveyed Section 9 in 1981, their section breakdown shows that they set irons at the NW, W1/4 and SW corners of said section 9.

Nov. Craig E. Johnson, LS, CFedS, found an iron spike at the position that matched the position of the Landecker corner. The spike was accepted as the corner and reference ties set as depicted on the face of this certificate.

**A000568461**  
**OFFICE OF COUNTY RECORDER**  
**CASS COUNTY MINNESOTA**  
**CERTIFIED, FILED, AND/OR**  
**RECORDED ON**  
**02/23/2011 07:52:49 AM**  
**AS DOC #: A000568461**  
**PAGES: 2 REC FEES: 0.00**  
**KATHRYN M. NORBY**  
**COUNTY RECORDER**