



8 0 0 9 9 0 2  
Tx:4007001

**A000561973**

**OFFICE OF COUNTY RECORDER  
CASS COUNTY MINNESOTA  
CERTIFIED, FILED, AND/OR  
RECORDED ON  
07/20/2010 12:31:05 PM  
AS DOC #: A000561973  
PAGES: 2 REC FEES: 0.00  
KATHRYN M. NORBY  
COUNTY RECORDER**

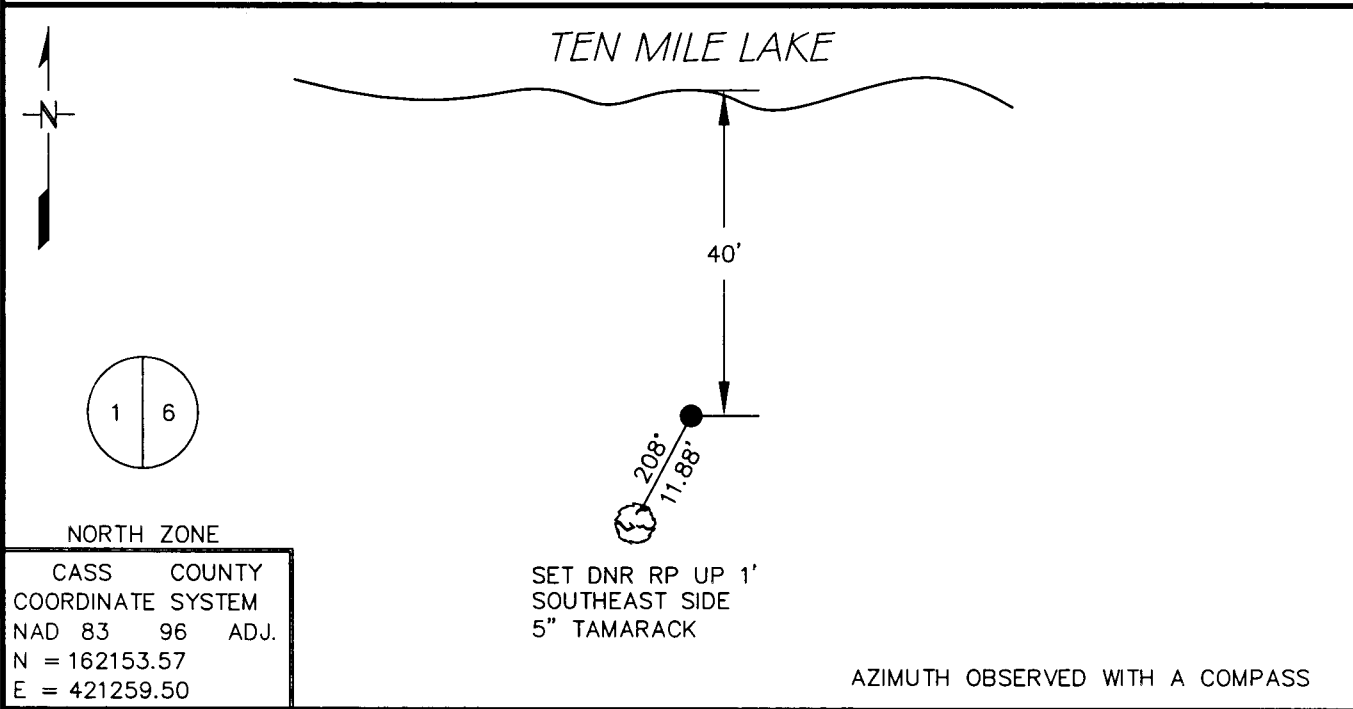
Index No. BC-25

# CERTIFICATE OF LOCATION OF GOVERNMENT CORNER

MEANDER CORNER # 16 of Section 1, Township 140 N, Range 31 W  
5TH Principal Meridian, State of Minnesota, County of CASS

At the corner location shown on the sketch:

- On 12/22/05 found a 2" GALVENIZED IRON PIPE IN SWAMP UP 0.5'  
DATE
- left monument as found,       lowered monument,       removed monument (explain)
- On \_\_\_\_\_ Placed a \_\_\_\_\_  
DATE



Statement of evidence for this corner location is on back of this page.

AUGUST 2006  
AMA00119

I certify that this document was researched and prepared by me or under my direct supervision.

SIGNATURE John DeWalt DATE 7/14/10 License Number 16098

Title:  Land Surveyor       Professional Engineer       County Surveyor       County Engineer

**Meander Corner # 16 Section 1, Township 140 North, Range 31 West**

The Department of Natural Resources, Division of Lands and Minerals, contacted the following offices for information regarding this corner:

MN Secretary of State  
Minnesota Department of Transportation  
Cass County Surveyor's Office  
Landecker & Associates, Inc.  
Northern Lights Surveying and Mapping  
Cass County Recorder's Office

1865 The US General Land Office field notes, on file in the Secretary of State's Office, show this corner to be marked with a post and the following bearing trees were marked:

White Pine 8" N 82° E 727 links (479.82')

GLO measured 6.33 chains (417.78') from the East Quarter of Section 1.

1923 A resurvey of Section 6, Township 140 North, Range 30 West, by County Surveyor John M. Greene, shows a 2" x 48" capped iron monument for the corner a distance of 410.0' from the East Quarter Corner. The bearing listed from the Southeast Corner to the East Quarter Corner is N1°00'E and N1°31'E from the East Quarter Corner to meander corner.

1982 Minnesota Department of Transportation has a subdivision for Section 6, Township 140 North, Range 30 West, but does not show any information on this corner.

2005 In December the DNR survey crew found a 2" galvanized iron pipe in a swamp approximately 50' south of Ten Mile Lake. Our survey reveals a deflection of 0°37'55" right and a distance of 409.92' from the East Quarter Corner. The iron pipe was accepted as marking the obliterated location for the corner and ties were taken.

East Quarter Corner bears S02°16'04"W 409.92'

For more information on our survey in this area, please contact MN DNR, Division of Lands and Minerals, Survey Section, 1601 Minnesota Drive, Brainerd, MN 56401