

# CERTIFICATE OF LOCATION OF GOVERNMENT CORNER

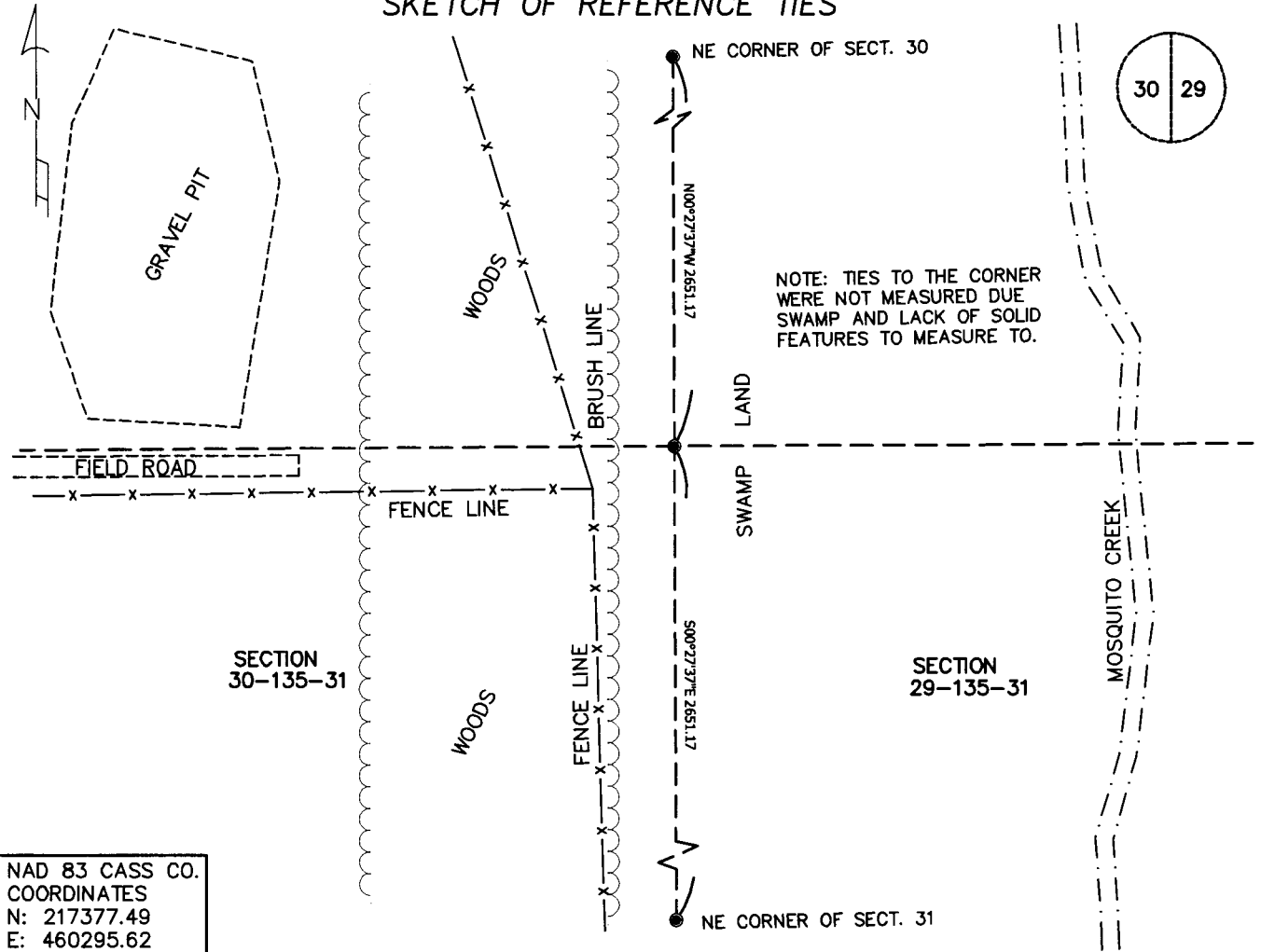
EAST QUARTER Corner of Section 30, Township 135 N, Range 31 W, 5TH P.M.

STATE OF MINNESOTA, County of CASS

At the corner location shown on the sketch:

- On \_\_\_\_\_ found a \_\_\_\_\_  
Date \_\_\_\_\_
- left monument as found,  lowered monument,  removed monument (explain)
- On 04/25/09 placed a 1/2" IRON PIPE WITH CAP INSCRIBED  
Date \_\_\_\_\_  
WITH "BONESTROO 43809" FLUSH WITH THE SURFACE

## SKETCH OF REFERENCE TIES



NAD 83 CASS CO.  
COORDINATES  
N: 217377.49  
E: 460295.62

Statement of evidence relative to this corner location is on back of page.

I hereby certify that this document and the data contained herein was prepared by me or under my direct supervision.

*Timothy D. Larson*  
Timothy D. Larson, PLS 6/28/00  
Date

Registration No. 43809

- Land Surveyor  Professional Engineer
- County Surveyor  County Engineer

OFFICE OF THE COUNTY RECORDER

County of \_\_\_\_\_

I hereby certify that this document was filed in the County Recorders office at \_\_\_\_\_ o'clock \_\_\_\_ M. on the \_\_\_\_\_ day of \_\_\_\_\_, 20\_\_\_\_.

County Recorder \_\_\_\_\_

Document Number \_\_\_\_\_



**Statement of Evidence:**

East Quarter Corner of Section 30, Township 135 North, Range 31 West,  
Meadowbrook Township, 5th Principal Meridian, Cass County, Minnesota.

**1870**

The original government survey for the subdivision lines were ran by Richard Cronk and the original notes show a wood post set with the following bearing trees:

8" Aspen	S 3.5° E	200 Links
7" Aspen	S 75° W	25 Links

**April 25, 2009**

Timothy D. Larson, PLS # 43809, while surveying in Section 29, could not locate the corner. The written history is thin and does not give a conclusive picture as to the true corner location. We established this corner by single proportionate measurements between the Northeast corner of Section 30 and Northeast corner of Section 31. A visit with the landowner (Clarence Nelson) was made and he mentioned that the fence lines near this corner were built on the edge of the swamp for simplicity and were not based on any surveyed lines, therefore, we did not base our decision off any fence lines. The fence line going west from the corner seemed to have been close to the east-west quarter line, however, the landowner also noted that this fence was built in the early 70's based on rough measurements from Co. Rd. 35 on the south line of the section. A capped iron monument was set after performing an unsuccessful secondary search for any evidence of an old corner in the area.

**A000561669**  
**OFFICE OF COUNTY RECORDER**  
**CASS COUNTY MINNESOTA**  
**CERTIFIED, FILED, AND/OR**  
**RECORDED ON**  
**07/07/2010 3:25:16 PM**  
**AS DOC #: A000561669**  
**PAGES: 2 REC FEES: 0.00**  
**KATHRYN M. NORBY**  
**COUNTY RECORDER**