

A000549054

OFFICE OF COUNTY RECORDER  
CASS COUNTY MINNESOTA

CERTIFIED, FILED, AND/OR  
RECORDED ON  
05/12/2009 03:29:28PM

AS DOC #: A000549054  
PAGES: 2  
REC FEES: \$0.00

KATHRYN M. NORBY  
COUNTY RECORDER

BY Kathryn M Norby DEPUTY  
*mm*

Index No. V-25

# CERTIFICATE OF LOCATION OF GOVERNMENT CORNER

NORTHEAST Corner of Section 36, Township 140 N, Range 28 W

5TH Principal Meridian, State of Minnesota, County of CASS

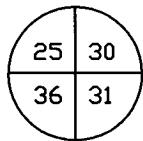
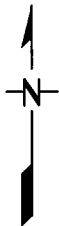
At the corner location shown on the sketch:

On 1/12/2009 found a 2" IRON PIPE 3' BELOW WATER SURFACE AT EDGE OF  
DATE

OPEN WATER AND FLOATING BOG

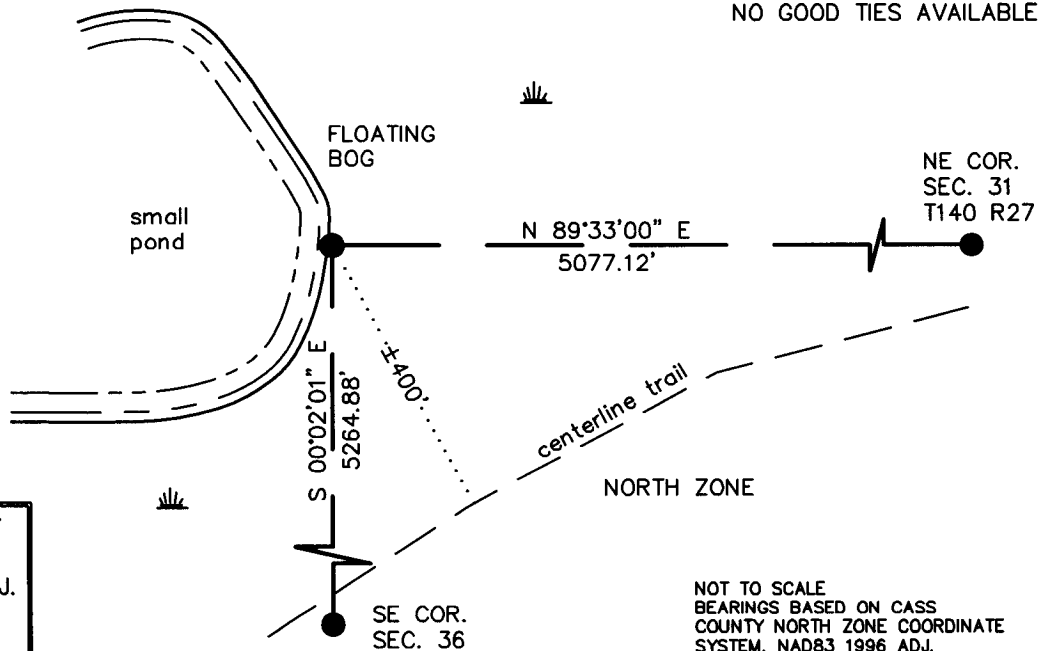
left monument as found,  lowered monument,  removed monument (explain)

On \_\_\_\_\_ Placed a \_\_\_\_\_  
DATE



NORTH ZONE

CASS COUNTY  
COORDINATE SYSTEM  
NAD 83 1996 ADJ.  
N = 137079.099  
E = 515631.597



NOT TO SCALE  
BEARINGS BASED ON CASS  
COUNTY NORTH ZONE COORDINATE  
SYSTEM, NAD83 1996 ADJ.

Statement of evidence for this corner location is on back of this page.

RAL FEBRUARY 2009  
WMA00844

I certify that this document was researched and prepared by me or under my direct supervision.

SIGNATURE Joseph A Fleisher DATE 4/28/09 License Number 44974

Title:  Land Surveyor  Professional Engineer  County Surveyor  County Engineer

STATEMENT OF EVIDENCE**Northeast Corner Section 36, Township 140 North, Range 28 West, 5<sup>th</sup> P.M.**

The Department of Natural Resources, Division of Lands and Minerals, contacted the following offices for information regarding this corner:

MN Secretary of State  
 Cass County Recorder  
 Cass County Surveyor  
 Landecker & Associates Inc.  
 Washburn Lake DNR Forestry

1864 The US General Land Office field notes, on file in the Secretary of State's Office, indicate a post set at the corner with the following bearing trees:

6" Tamarack	N 17° E	23 Links (15.18')
6" J. Pine	S 27° E	29 Links (17.16')
5" Tamarack	S 79° W	8 Links (5.28')
6" J. Pine	N 23° W	22 Links (14.52')

1938 Civilian Conservation Corps field notes Book 9, page 6, located at Washburn Lake DNR Forestry office indicate a found 1.5" iron pipe next to a 3" square stake 2' high for the corner with the following bearing trees:

10" Tamarack	S 33° 30' E	25 feet
10" Tamarack	N 70° E	17.5 feet

1939 Cass County Surveyor's Office notes Book D, page 235, show that surveyor John Curo set a pipe at the corner years prior but when he returned to the corner when running the North line of Section 31, Township 140, Range 27 he found that it had been moved. He reset a 2" x 48" iron pipe at the corner using all four found GLO BT stumps. Curo measures of 5077' to the Northeast corner of Section 31, Township 140, Range 27.

2009 In January, the DNR survey crew made a search for evidence of the corner and found a 2" iron pipe 3' below the surface of the water at the edge of a floating bog and a small pond. No bearing trees were found. The pipe was accepted as marking the corner. No good ties were available.

The Northeast corner of Section 31, T 140, R 27 bears N 89°33'00" E 5077.12'  
 The Southeast corner of Section 36, T 140, R 28 bears S 00°02'01" E 5264.88'

For more information on our survey in this area, please contact the MN DNR, Division of Lands and Minerals, Survey Section, 1601 Minnesota Drive, Brainerd, MN 56401