

CERTIFICATE OF LOCATION OF GOVERNMENT CORNER

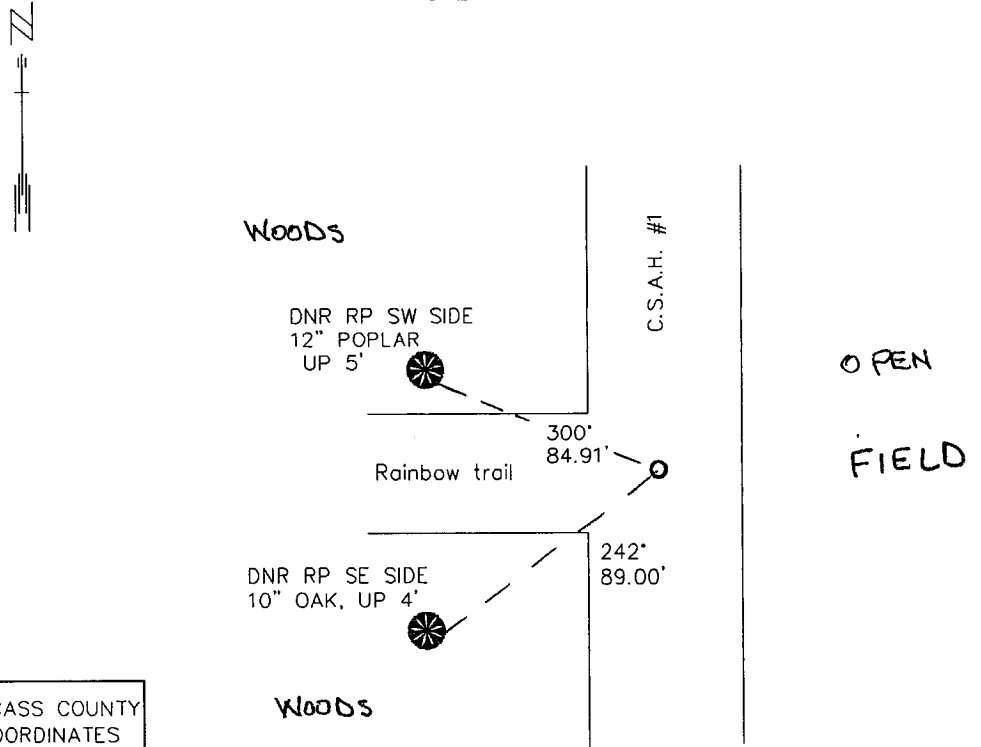
EAST QUARTER Corner of Section 16, Township 135, Range 30, 5th P.M.

STATE OF MINNESOTA, County of CASS

At the corner location shown on the sketch:

- On _____ found a _____
DATE
- left monument as found, lowered monument, removed monument (explain)
- On 3/23/98 Placed a 3/4" X 18" Iron rod with plastic cap marked "DNR Survey
DATE Marker"

SKETCH OF REFERENCE TIES



CASS COUNTY COORDINATES
N 227998.93
E 502911.56

AZIMUTHS OBSERVED WITH COMPASS

Statement of evidence relative to this corner location is on back of page.

2/18/2000
FOM01856

I hereby certify that this document and the data contained herein was prepared by me or under my direct supervision.

John D. Walker 4/30/09
SIGNATURE DATE

License Number 16098

Land Surveyor, Professional Engineer
 County Surveyor, County Engineer

OFFICE OF THE COUNTY RECORDER
County of _____

I hereby certify that this document was filed in the Co. recorders office at _____ .M. on the _____ day of _____ A.D., 19____

County Recorder _____
By _____, Deputy
DOCUMENT NO. _____

East Quarter Corner Section 16, Township 135 North, Range 30 West

The Department of Natural Resources, Bureau of Engineering contacted the following offices for information regarding this corner:

- MN Secretary of State
- Cass County Surveyor
- Widseth, Smith and Nolting of Brainerd
- Landecker and Associates of Pequot Lakes
- Landecker and Associates of Walker
- Central Minnesota Surveying

1869 The US General Land Office field notes, on file in the Secretary of State's Office, show this corner to be marked with a post and the following bearing trees were marked:

- Fir 3" West 4 links (2.64')
- Aspen 12" S 57° E 27 links (17.82')

???? The survey of State Rural Highway No. 80 shows stationing at the section corners to the north and south of this corner. The distance between the section corners is 5298.9'.

1920 Lincoln Mackey surveyed the Rainbow Trail through this township. He didn't find this corner, but found the section corners north and south of the corner. He measured 5293.1' between the section corners and set the quarter corner equidistant from and in line with the section corners. He measured 5224.5' to the East Quarter Corner of Section 17. The Rainbow Trail is on the east - west quarter line of Section 16. E.S. Tusler set an iron monument to mark the corner.

1998 In February, the DNR survey crew the centerline intersection of a north- south county road and a trail west. This intersection was accepted as marking the obliterated location of the corner.

Distances were measured to the following corners:

- Northeast Corner Section 21 - S 00°17'42"E 2648.41'
- East Quarter Corner Section 17 - N 89°36'00"W 5226.04'

For more information on our survey in this area please contact MN DNR, Bureau of Engineering, Survey Section, 1601 Minnesota Drive, Brainerd, MN 56401

A000549045

**OFFICE OF COUNTY RECORDER
CASS COUNTY MINNESOTA**

**CERTIFIED, FILED, AND/OR
RECORDED ON
05/12/2009 03:29:19PM**

**AS DOC #: A000549045
PAGES: 2
REC FEES: \$0.00**

**KATHRYN M. NORBY
COUNTY RECORDER**

BY Kathryn M. Norby ms **DEPUTY**