

A000545720

OFFICE OF COUNTY RECORDER  
CASS COUNTY MINNESOTA

CERTIFIED, FILED, AND/OR  
RECORDED ON  
01/21/2009 02:41:48PM

AS DOC #: A000545720  
PAGES: 2  
REC FEES: \$0.00

KATHRYN M. NORBY  
COUNTY RECORDER

BY Kathryn M. Norby  
DEPUTY

I HEREBY CERTIFY THAT THIS DOCUMENT AND THE DATA  
CONTAINED HEREIN WAS PREPARED BY ME OR UNDER  
MY DIRECT SUPERVISION.

[Signature] 12/11/08  
SIGNATURE DATE

LICENSE NO. 42619

- LAND SURVEYOR       PROFESSIONAL ENGINEER
- COUNTY SURVEYOR     COUNTY ENGINEER

NAD 1983/1996 CASS COUNTY COORDINATES  
N=334243.658      E= 520285.900

### CERTIFICATE OF LOCATION OF GOVERNMENT CORNER

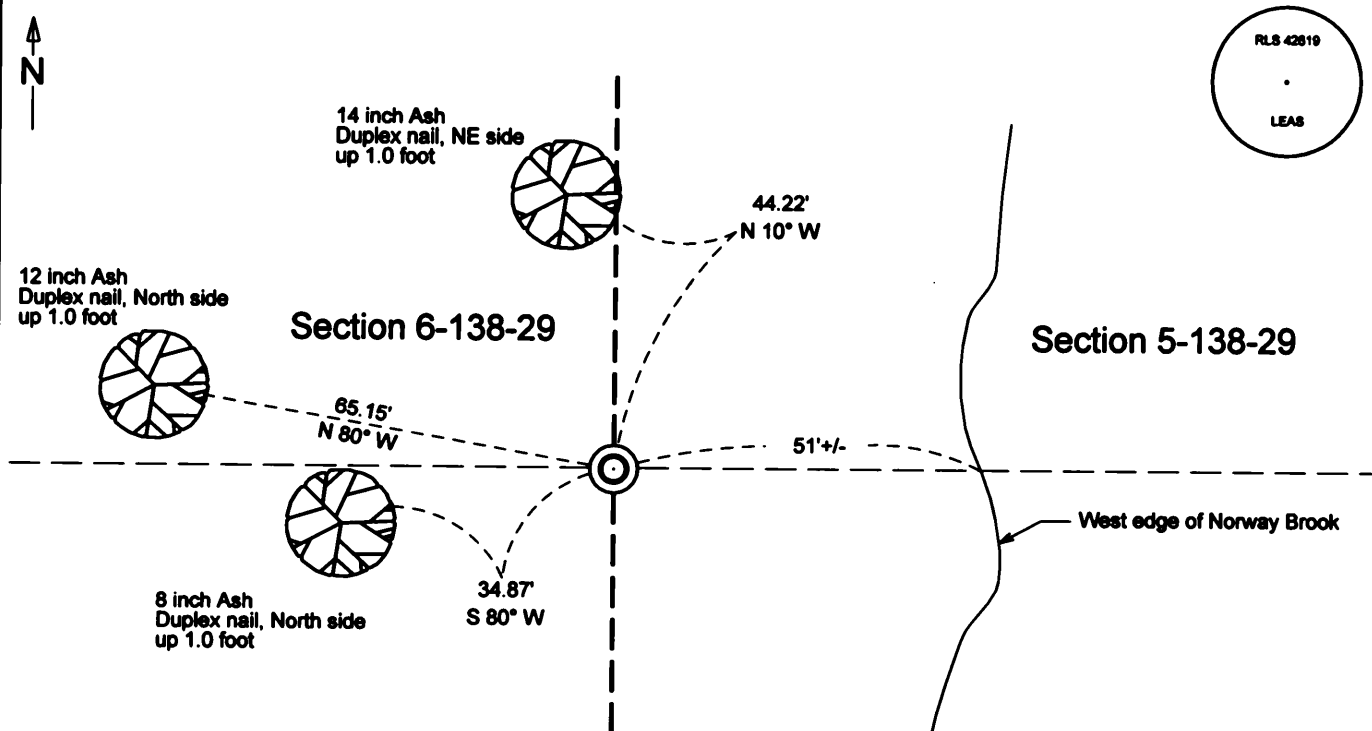
INDEX NO. C-5, East Quarter CORNER OF SECTION 6, TOWNSHIP 138, RANGE 29, 5TH P.M.  
STATE OF MINNESOTA, COUNTY OF CASS

AT THE CORNER LOCATION SHOWN ON THE SKETCH:

- ON \_\_\_\_\_ DATE FOUND A(N) \_\_\_\_\_
- LEFT MONUMENT AS FOUND,       LOWERED MONUMENT,       REMOVED MONUMENT (EXPLAIN)
- ON 12/02/08 DATE PLACED A(N) 1/2 inch x 16 inch iron pipe, with plastic RLS cap

### SKETCH OF REFERENCE TIES

MONUMENT MARKED:



**KLD**  
1120 Industrial Park Road SW  
Brainerd, MN 56401  
719-629-6333

**KRAMER LEAS DELEO**  
SURVEYING • ENGINEERING • PLANNING  
BRAINERD ST. CLOUD

STATEMENT OF EVIDENCE RELATIVE TO THIS CORNER LOCATION IS ON BACK OF PAGE

## **Index No. 13829C.0-05.0**

### **Statement of Evidence**

#### **East Quarter corner of Section 6, Township 138 North, Range 29 West, 5<sup>th</sup> Principal Meridian.**

- Jul. 26,  
1865            T.B. Walker, General Land Office Deputy Surveyor in the subdivision of Township 138 North, Range 29 West set a post for the original corner and referenced it as follows:  
5" Tam N 27 deg. E 90 links (59.40 feet ), 8" Tam N 80 deg. W 28 links (18.48 feet)  
Said records are on file with the Secretary of State, St Paul, Minnesota, copies are filed With the Cass County Surveyor's Office (CCSO).
- Feb. 28  
1918            J.W. Curo, RLS 1428, County Surveyor, working on a road order for Barclay Township, Curo Film Roll 13, Book 206, Page 90, on file in the CCSO, states "walk half a mile N. to ¼ bet 5 and 6. BTs gone." And "2568.72 S goes S. 58.67 To 2627.39 S then E 16.58 to ¼ Cor bet 5-6." On page 96 states "see Brown who says he never saw any BTs at ¼ bet 5 and 6." On page 101 states "go to ¼ cor bet 5 and 6 138-29, and at 2627.39 S run E (90 deg. Random) 16.58 ft and set 3 x 3 x 36" stake for true cor and witnessed as follows:  
12" Tam N 48 deg. 10 min. W 26.10 feet            10" Ash S 31 deg. W 8.80 feet  
Also notes "This ¼ post sets about 50' W of Norway Brook."
- Dec.12,  
2005            B. Hippen, CCSO technician, records of the CCSO, searched area on a small peninsula, 4 feet, more or less, higher than the river. No evidence of corner or witness trees was found.
- Oct. 08,  
2008            J. Leas conducted search of the area, no evidence of corner or witness trees found.
- Dec. 02,            J. Leas sets a ½ inch x 16 inch iron pipe monument with a plastic cap marked RLS 42619 at the computed single proportion position. And witnessed as follows:  
14 inch Ash N 10 deg. W 44.22 feet. 12 inch Ash N 80 deg. W 65.15 feet.  
8 inch Ash S 80 deg. W 34.87 feet. Norway Brook, 51'+/- East.

The monument, recovered and established references for the position are shown on the face of this document.

Analysis of the recovered data, field evidence and survey measurements, indicate that the monument set by J. Leas in 2008 is the correct perpetuation of this corner.