

# CERTIFICATE OF LOCATION OF GOVERNMENT CORNER

N1/4 Corner of Section 35, Township 142, Range 28,  
5th Principal Meridian, Cass County, State of Minnesota

At the corner location shown on the sketch:  
On 5/01/2007 Found a 1.5" Brass Capped  
Monument down 1 foot at the North Quarter corner  
of Section 35, T.142, R.28. Said monument was  
left as found.

## SKETCH OF REFERENCE TIES

BEARINGS SHOWN TO REFERENCE TIES  
ARE MAGNETIC COMPASS BEARINGS  
DISTANCE UNITS FOR THIS DRAWING IS  
U.S. SURVEY FEET

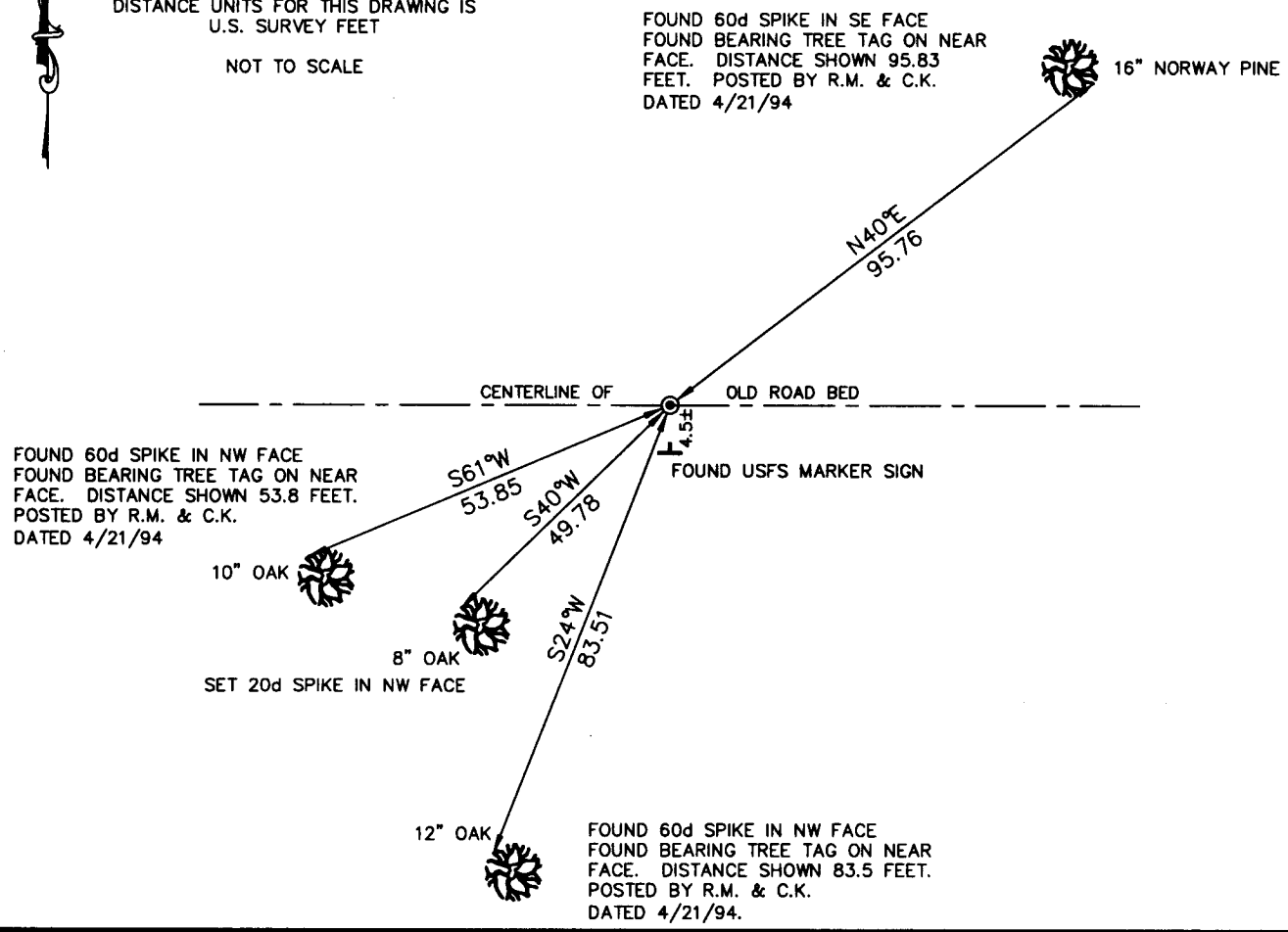
NOT TO SCALE

FOUND 60d SPIKE IN SE FACE  
FOUND BEARING TREE TAG ON NEAR  
FACE. DISTANCE SHOWN 95.83  
FEET. POSTED BY R.M. & C.K.  
DATED 4/21/94

16" NORWAY PINE



114/34



Statement of evidence relative to this corner location is on back of page.

I hereby certify that this document and the data contained herein was prepared by me or under my direct supervision.

Tyler J. Kroschel  
Tyler J. Kroschel

7-28-2008  
Date

License No. 44490

- Land Surveyor
- Professional Engineer
- County Surveyor
- County Engineer

**OFFICE OF THE COUNTY RECORDER**  
County of Cass

I hereby certify that this document was filed in the  
County Recorders office at \_\_\_\_\_ .M. on the  
\_\_\_\_\_ day of \_\_\_\_\_ A.D., 20\_\_\_\_

County Recorder \_\_\_\_\_  
By \_\_\_\_\_, Deputy

DOCUMENT NO. \_\_\_\_\_

Statement of Evidence:

In February of 1874, Deputy Surveyor P.H. Conger set a post to mark the North Quarter Corner of Section 35, Township 142 North, Range 28 West, 5th Principal Meridian.

Between July of 1919 and August of 1928, Earl G. Harrington, U.S. Cadastral Engineer, and Hal D. Craig, U.S. Surveyor, made a dependant resurvey and subdivision of Section 35. They found no evidence of the original corner and set a 1" x 36" Iron Pipe with a Brass Cap to mark the North Quarter Corner of Section 35. They took new ties.

In April of 1994, United States Forest Service Survey crew Rob Main and Curt Krause searched for the North Quarter corner of Section 35. The monument had been removed many years earlier by road construction. They did find evidence of both Oak bearing trees and placed a 2" x 24" Iron Pipe with Brass Cap from tie distances. They also set two large rocks alongside the monument. The larger of the rocks has a very strong magnetic draw. They established reference ties per USFS Corner Restoration Book #2, Page 5.

In December of 2005, Terry Freeman, RLS 21367 made a survey in Government Lots 3 and 5 for William Cooksey. Mr. Freeman found the Brass Cap monument and used it for his survey.

In May 2007, a survey was made around Section 35, Township 142 North, Range 28 West, 5th Principal Meridian for PASF, LLC to locate existing monuments for the purposes of preparing the plat of TOWN LINE PENINSULA PLAT. On May 1, 2007, we found a 1.5" Brass Capped Monument approximately 1 foot below the surface of an old road bed. We also found bearing tree ties and tags set by the USFS in 1994. We verified the existing ties and established one additional reference tie.

**A000540870**

**OFFICE OF COUNTY RECORDER  
CASS COUNTY MINNESOTA**

**CERTIFIED, FILED, AND/OR  
RECORDED ON  
08/05/2008 02:29:54PM**

**AS DOC #: A000540870  
PAGES: 2  
REC FEES: \$0.00**

**KATHRYN M. NORBY  
COUNTY RECORDER**

BY Kathryn M. Norby  
DEPUTY  
JK