

A000530682

OFFICE OF COUNTY RECORDER
CASS COUNTY MINNESOTA

CERTIFIED, FILED, AND/OR
RECORDED ON
09/11/2007 02:31:01PM

AS DOC #: A000530682
PAGES: 2
REC FEES: \$0.00

KATHRYN M. NORBY
COUNTY RECORDER

BY Kathryn M. Norby ^{DEPUTY}

CERTIFICATE OF LOCATION OF GOVERNMENT CORNER

North Quarter Corner of Section 9, Township 133, Range 30

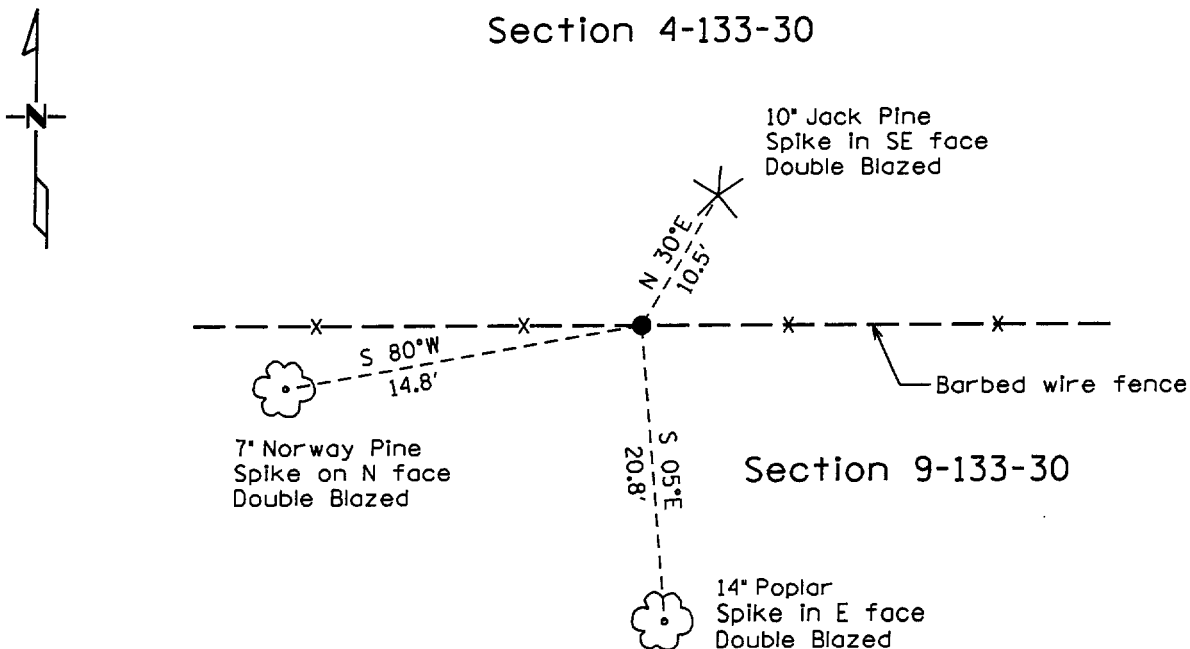
West Principal Meridian, State of Minnesota, County of Cass

At the corner location shown on the sketch:

On 5-29-07 found a 1 1/4" Well Point
DATE

left monument as found lowered monument removed monument (explain)

On _____ placed a _____
DATE



Statement of evidence for this corner location is on back of this page.

I hereby certify that this document was researched and prepared by me or under my direct supervision.

Signature *James Kume* Date 7-6-2007 License No. 23668

Title: Land Surveyor Professional Engineer County Surveyor County Engineer

Statement of Evidence:

North Quarter corner Section 9, Township 133 North, Range 30 West

The Original Public Land Survey was run in 1870 and a wood post was set to mark the corner. Bearing tree ties were made to two Black Pines.

In 2007 Kramer Leas DeLeo recovered 1 1/4" well point, as shown by long time area resident Eugene Pietz, as the location for this corner in a East-West baring fenceline. Bearing tree ties were made to a Norway Pine, a Poplar and a Jack Pine. Previous surveys as filed in the Office of the County Surveyor reflect a lost position used for this corner. Kramer Leas DeLeo accepts the well point as the correct location for the corner.

For details and survey analysis contact Kramer Leas DeLeo in Brainerd, Minnesota.