

CERTIFICATE OF LOCATION OF GOVERNMENT CORNER

I hereby certify that this survey, plan, or report was prepared by me or under my direct supervision and that I am a duly Licensed Land Surveyor under the laws of the State of Minnesota.

Todd R. Johnson

TODD R. JOHNSON

Date: 1/11/07 License No: 44869
44869

OFFICE OF THE COUNTY RECORDER
County of CASS

I hereby certify that this document was filed in the Office of the County Recorder at _____ o'clock _____ M. on the _____ day of _____, 20____ A.D.

County Recorder _____

By: _____, Deputy
DOCUMENT NO. _____

EAST QUARTER Corner of Section 22, Township 139, Range 26, 5TH P.M.

On _____ found a _____

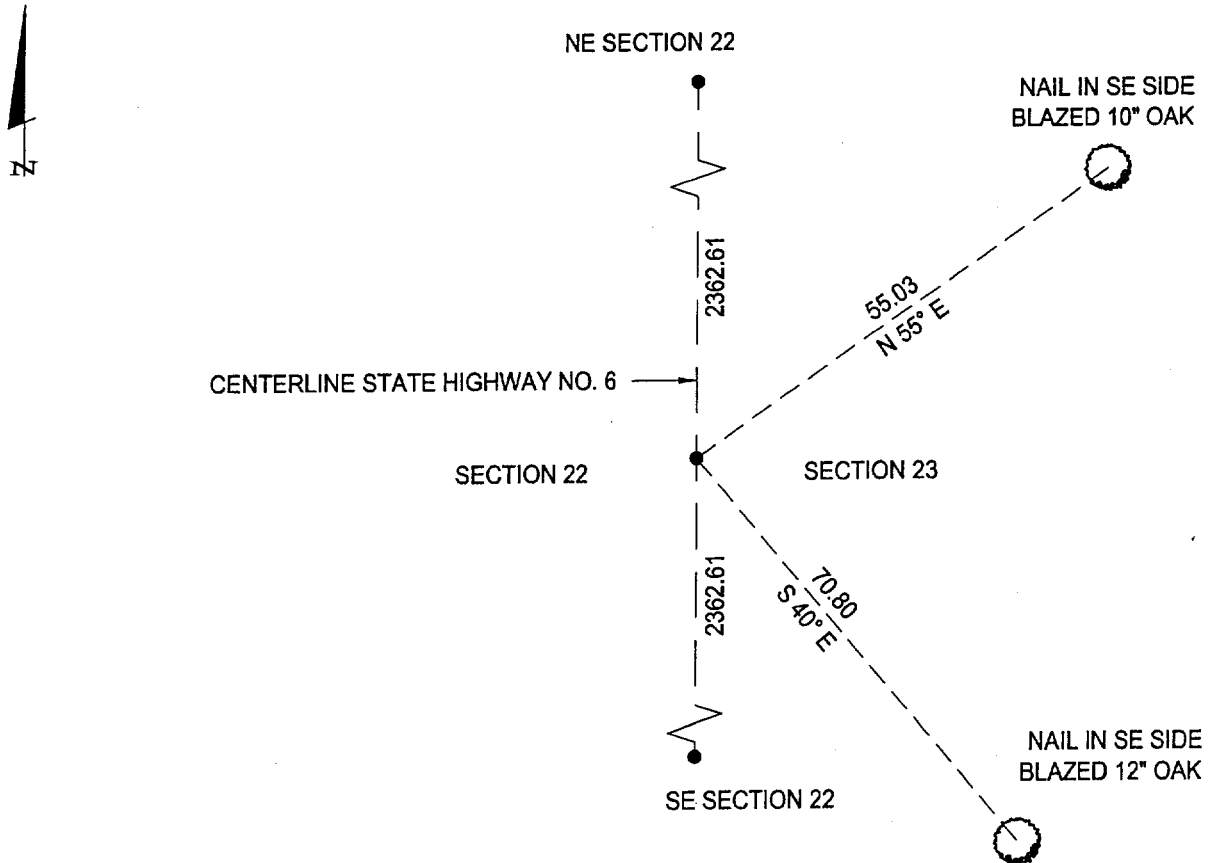
left monument as found, lowered monument, removed monument (explain)

On 11/29/06 placed a SET MAG NAIL IN CENTERLINE OF STATE HIGHWAY NO. 6

SKETCH OF REFERENCE TIES

Corner Index: P-17

Not to Scale



Statement of evidence for this corner position is on the back of this page

STATEMENT OF EVIDENCE

Index No. P - 17

East Quarter Corner, Section 22, Township
139 North, Range 26 West, Cass County,
Minnesota

- 1863 Johnson and Thornton, U.S. Deputy Surveyors originally established this corner position while surveying the interior subdivision lines of Township 139 North, Range 26 West. A wood post was set to mark the corner position with the following witnesses: A 5 inch Aspen, North 73 degrees East, 46 links; A 12 inch Pine, North 78 degrees West, 57 links.
- 1909 County Survey Record Book "A", page 395 shows a survey by John Curo, Cass County Surveyor. He found the Quarter Corner between Sections 22 and 23 to be gone. He found a stake set by B.B. Bartlett and a bearing tree: A 6 inch Poplar, about North 30 degrees West, 5 paces. Curo does not document that he accepts Bartlett's corner position.
- 1930 J.H. Flynn, County Surveyor, shows corner on Township Road survey.
- 2006 November 29th, a Landecker and Associates, Inc. survey crew searches for the corner and finds nothing. In 1909, John Curo, Cass County Surveyor, found the distance between the Northeast and Southeast Corners of Section 22 to be 5266 feet (County Book "A", p.396). Landecker and Associates, Inc. found the distance to be 5265.22 feet. A mag nail is set by proportionate distance between the Northeast and Southeast Corners of Section 22 and the following accessories are established: A 10 inch Oak, North 55 degrees East, 55.03 feet; A 12 inch Oak, South 40 degrees East, 70.80 feet.

A000525260

**OFFICE OF COUNTY RECORDER
CASS COUNTY MINNESOTA**

**CERTIFIED, FILED, AND/OR
RECORDED ON
04/12/2007 08:41:33AM**

**AS DOC #: A000525260
PAGES: 2
REC FEES: \$0.00**

**KATHRYN M. NORBY
COUNTY RECORDER**

BY Kathryn M Norby **DEPUTY**
m