

# CERTIFICATE OF LOCATION OF GOVERNMENT CORNER

I hereby certify that this survey, plan, or report was prepared by me or under my direct supervision and that I am a duly Licensed Land Surveyor under the laws of the State of Minnesota.

*Todd R. Johnson*

TODD R. JOHNSON

Date: 1/11/07 License No: 44867  
44869

OFFICE OF THE COUNTY RECORDER  
County of CASS

I hereby certify that this document was filed in the Office of the County Recorder at \_\_\_\_\_ o'clock \_\_\_\_\_ M. on the \_\_\_\_\_ day of \_\_\_\_\_, 20\_\_\_\_ A.D.

County Recorder \_\_\_\_\_

By: \_\_\_\_\_, Deputy  
DOCUMENT NO.

NORTHEAST Corner of Section 27, Township 139, Range 26, 5TH P.M.

On 8/15/06 found a FOUND RAILROAD SPIKE IN CENTERLINE STATE HIGHWAY NO. 6

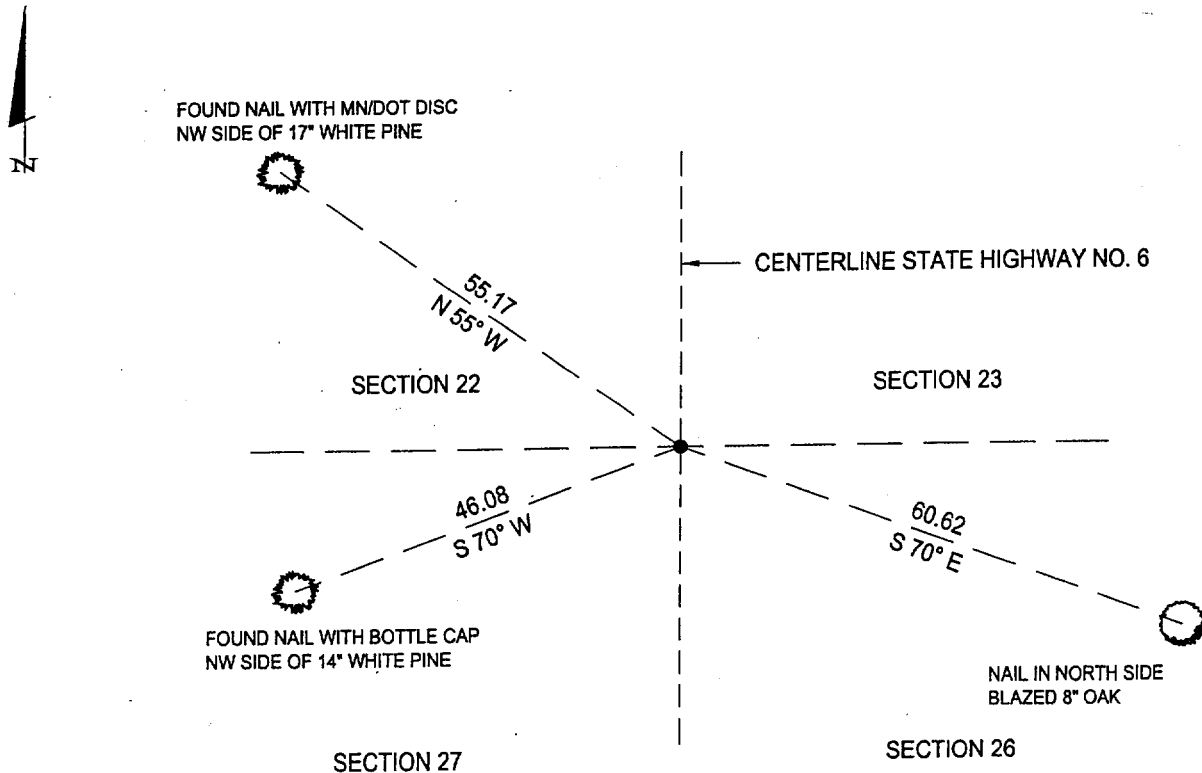
left monument as found,  lowered monument,  removed monument (explain)

On \_\_\_\_\_ placed a \_\_\_\_\_

## SKETCH OF REFERENCE TIES

Corner Index: R-17

Not to Scale



Statement of evidence for this corner position is on the back of this page

STATEMENT OF EVIDENCE

Index No. R - 17

Northeast Corner, Section 27, Township 139  
North, Range 26 West, Cass County,  
Minnesota

- 1863 Johnson and Thornton, U.S. Deputy Surveyors originally established this corner position while surveying the interior subdivision lines of Township 139 North, Range 26 West. A wood post was set to mark the corner position with the following witnesses: A 24 inch White Pine, North 24 degrees East, 149 links; A 30 inch White Pine, North 53 degrees West, 35 links; A 32 inch White Pine, South 30 degrees East, 70 links; A 29 inch White Pine, South 22 degrees West, 90 links.
- 1909 County Survey Record Book "A", pages 395 – 397 shows a survey by John Curo. He found the Northeast, Northwest and Southwest stumps of the original BTS and sets a 5 inch x 5 inch x 40 inch post.
- County Survey Record Book "B", page 90, shows ties to the corner by George Ralph as part of a survey for State Rural Highway No. 83, stake Southwest 48.9 feet and stake Southeast 40.5 feet.
- 1927 Plat of IOWANA HEIGHTS, by J.H. Flynn, shows corner.
- 1930 J.H. Flynn, County Surveyor, shows corner on Township Road Survey.
- 1938 Survey by CCC's Book #20, page 40 at Washburn Lake Ranger Station shows corner is West 15 feet from the centerline of road.
- 1975 Plat of survey by Wallace Buckler, RLS#9672, tie to corner.
- 1995 A Certificate of Survey in Section 26 by Landecker and Associates, Inc. shows tie to corner.
- 1996 A Certificate and Plat of Survey by Bruce Grivna, RLS#17253, in Government Lot 6 of Section 23 shows a found iron monument.
- 2006 July 28<sup>th</sup>, a Landecker and Associates, Inc. survey crew finds a railroad spike and accepts it as the corner position. In 1909, John Curo, Cass County Surveyor, found the distance between the Northeast and Southeast Corners of Section 22 to be 5266 feet (County Book "A", p. 396). Landecker and Associates, Inc. found the distance to be 5265.22 feet. It is also determined that this is the corner used by Grivna. The following accessories are established: An 8 inch Oak, South 70 degrees East, 60.62 feet; A 14 inch White Pine, South 70 degrees West, 46.08 feet; A 17 inch White Pine, North 55 degrees West, 55.17 feet.

A000525257

OFFICE OF COUNTY RECORDER  
CASS COUNTY MINNESOTA

CERTIFIED, FILED, AND/OR  
RECORDED ON  
04/12/2007 08:41:30AM

AS DOC #: A000525257  
PAGES: 3  
REC FEES: \$0.00

KATHRYN M. NORBY  
COUNTY RECORDER

BY Kathryn M Norby m DEPUTY