

# CERTIFICATE OF LOCATION OF GOVERNMENT CORNER

I hereby certify that this survey, plan, or report was prepared by me or under my direct supervision and that I am a duly Licensed Land Surveyor under the laws of the State of Minnesota.

*Todd R. Johnson*  
Todd R. Johnson

Date: 1/29/07 License No: 44869  
44869

OFFICE OF THE COUNTY RECORDER  
County of CASS

I hereby certify that this document was filed in the Office of the County Recorder at \_\_\_\_\_ o'clock \_\_\_\_\_ M. on the \_\_\_\_\_ day of \_\_\_\_\_, 20\_\_\_\_ A.D.

County Recorder \_\_\_\_\_

By: \_\_\_\_\_, Deputy  
DOCUMENT NO.

NORTHWEST Corner of Section 19, Township 143, Range 31, 5th P.M.

On 11/09/01 found a 1 inch diameter iron shaft down ± 1 foot

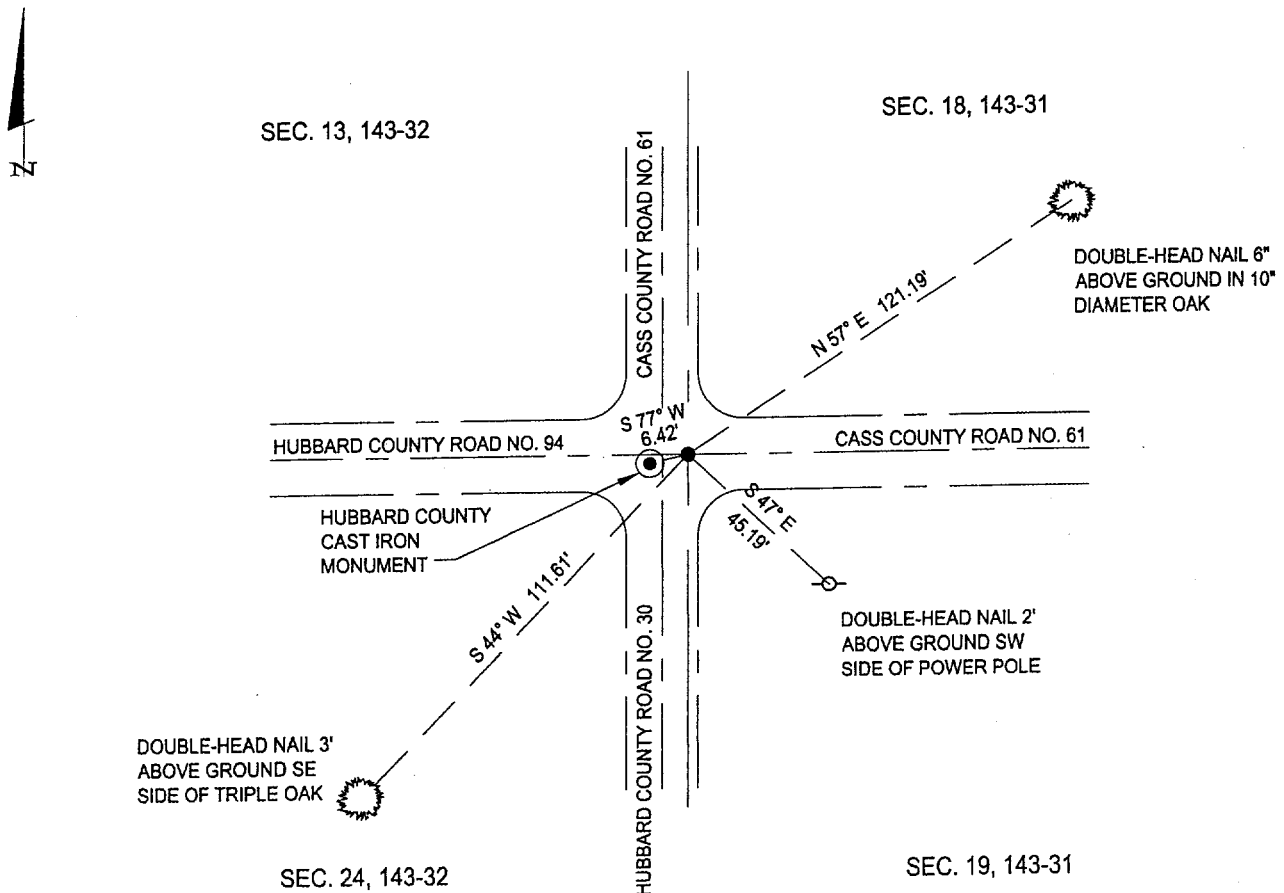
left monument as found,  lowered monument,  removed monument (explain)

On \_\_\_\_\_ placed a \_\_\_\_\_

## SKETCH OF REFERENCE TIES

Corner Index: N-1

Not to Scale



STATEMENT OF EVIDENCE

Index No. N - 1

Northwest Corner, Section 19, Township 143 North,  
Range 31 West, Cass County, Minnesota

- 1875 B.B. Baldwin, U.S. Deputy Surveyor, originally established this corner position while surveying the boundary lines of Townships 143 and 144, Range 30 and 31 of the 5<sup>th</sup> Principal Meridian. A Wood Post was set with the following witnesses: A 25 inch White Pine, South 40 degrees East, 47 links; A 25 inch White Pine, North 8 degrees East, 19 links; A 20 inch White Pine, North 83 degrees West, 44 links; A 20 inch White Pine, South 55 degrees West, 50 links.
- 1917 August 8, A.N. Kimmell, U.S. Cadastral Engineer, conducted a survey of the Re-establishment of a Portion of the Exterior and Subdivisional Lines, Remarking of Allotment Corners and other Surveys with Township 143 North, Range 31 West. His notes indicate that he accepted the corner position as re-established by County Surveyor Spencer of Hubbard County, seven years prior to this survey.
- 1917 August 14, County Book C, p. 77-79, shows a survey by E.B. Horst, Assistant County Surveyor. He chained west from the corner common to Sections 17, 18, 19, and 20, Township 143 North, Range 31 West. At 4445.4 feet West, he found the center of State Rural Highway No. 82 and the corner common to Sections 18, 19, 13, and 24, Township 143, Range 31 and 32, Cass and Hubbard Counties.
- 1969 April, R.F. Schneider, RLS#5740, set a 1 inch diameter shaft at the corner position while conducting a survey in Section 18, Township 143, Range 31. He established this position by using the record distance of 4445.4 feet from the Southeast corner of Section 18 as found by Horst in 1917. His notes indicate that the corner falls 5 feet east of the centerline of the road north and south, and on the centerline of the road east and west. He established the following witnesses: A Power Pole, North 10 degrees East, 161.29 feet; A 6 inch White Pine, North 28 degrees East, 131.15 feet; A Power Pole, South 38 degrees East, 46.37 feet;. Notes of this survey are found in Fieldbook No. 16, p. 52, on record at the office of Landecker and Associates, Inc., Walker, Minnesota.
- 1996 October, the Hubbard County Survey Department conducted a survey along the east line of Township 143, Range 32, between the Northeast corner of Section 36 and the Northeast corner of Section 12. The iron shaft set by Schneider in 1969 was found, but not accepted. Hubbard County had a history dating back to 1910 calling for the intersection of roads as the corner location.
- 2000 August, Hubbard County Survey Department placed a Hubbard County cast iron monument at the intersection of roads 6.5 feet westerly of the iron shaft. The following accessories were established: A 9 inch White Oak, North 57 degrees East, 128.58 feet; A Power Pole, South 47 degrees East, 48.93 feet; A 7 inch Twin White Oak, South 45 degrees West, 83.27 feet.
- 2001 November, A Landecker & Associates, Inc. survey crew finds the 1 inch iron shaft set by Schneider in 1969. Also found was the Hubbard County cast iron monument. The iron shaft was accepted as the corner position.
- 2006 A Landecker & Associates, Inc. survey crew finds and accepts the 1 inch iron shaft as the corner position. The corner was set in consistence with the Horst survey of 1917. The following accessories are established: A Triple Oak, South 44 degrees West, 111.61 feet; A 10 inch Oak, North 56 degrees East, 121.19 feet (Hubbard County Tie); A Power Pole, South 40 degrees East, 46.19 feet (Hubbard County Tie); Hubbard County Cast Iron Monument, South 77 degrees West, 6.42 feet.

A000525255

OFFICE OF COUNTY RECORDER  
CASS COUNTY MINNESOTA

CERTIFIED, FILED, AND/OR  
RECORDED ON  
04/12/2007 08:41:28AM

AS DOC #: A000525255  
PAGES: 3  
REC FEES: \$0.00

KATHRYN M. NORBY  
COUNTY RECORDER

BY Kathryn M Norby / DEPUTY  
mw