

CERTIFICATE OF LOCATION OF GOVERNMENT CORNER

I hereby certify that this survey, plan, or report was prepared by me or under my direct supervision and that I am a duly Licensed Land Surveyor under the laws of the State of Minnesota.

Terry L. Freeman

 TERRY L. FREEMAN

Date: 2/9/07 License No: _____ 21367

OFFICE OF THE COUNTY RECORDER
 County of CASS

I hereby certify that this document was filed in the Office of the County Recorder at _____ o'clock _____ M. on the _____ day of _____, 20____ A.D.

County Recorder _____
 By: _____, Deputy
 DOCUMENT NO. _____

NORTH QUARTER Corner of Section 25, Township 143, Range 31, 5TH P.M.

On 5/22/06 found a FOUND 1" IRON PIPE WITH BRASS CAP UP 8"

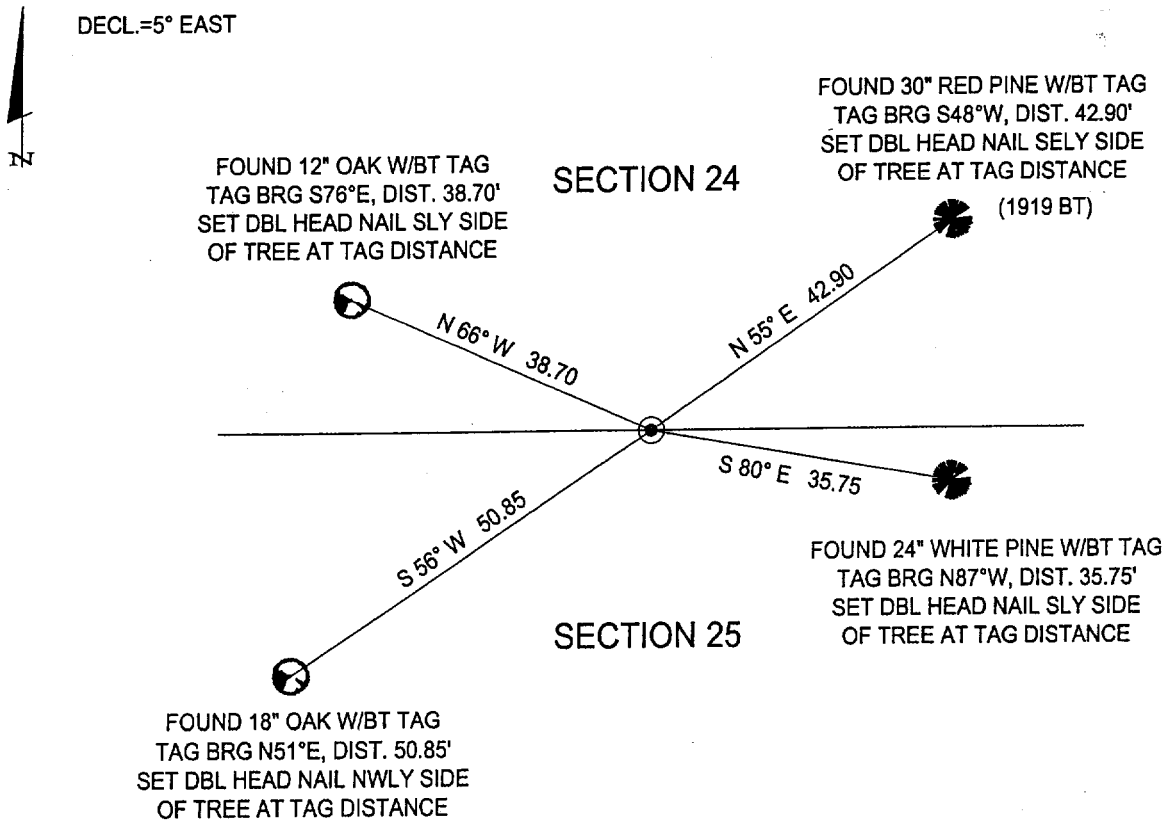
left monument as found, lowered monument, removed monument (explain)

On _____ placed a _____

SKETCH OF REFERENCE TIES

Corner Index: R23

Not to Scale



Statement of evidence for this corner position is on the back of this page

STATEMENT OF EVIDENCE

Index No. R - 23

North Quarter Corner, Section 25, Township 143
North, Range 31 West, Cass County, Minnesota

- 1875 Benjamin C. Baldwin, U.S. Deputy Surveyor, originally established this corner position while surveying the interior subdivision lines of Township 143 North, Range 31 West. A wood post was set to mark the corner position with the following witnesses: A 4 inch Red Oak, South 65 degrees West, 40 links; A 12 inch White Pine, North 15 degrees West, 58 links.
- 1919 Albinus N. Kimmell, U.S. Cadastral Engineer, re-established this corner position from original witnesses. He set a 1 inch x 36 inch iron pipe with brass cap from which the following witnesses: A 14 inch Norway Pine, North 48 1/2 degrees East, 65 links; A 5 inch Birch, South 72 1/2 degrees West, 25 links.
- 2005 December, a Landecker & Associates, Inc. survey crew recovers the brass cap monument and accepts the corner as established.
- 2006 May, a Landecker & Associates, Inc. survey crew recovers the brass cap monument and accepts the corner as a perpetuation of the original corner from which the following accessories: A 30 inch Red Pine, North 55 degrees East, 42.90 feet; A 24 inch White Pine, South 80 degrees East, 35.75 feet; An 18 inch Oak, South 56 degrees West, 50.85 feet; A 12 inch Oak, North 66 degrees West, 38.70 feet.

A000525251

OFFICE OF COUNTY RECORDER
CASS COUNTY MINNESOTA

CERTIFIED, FILED, AND/OR
RECORDED ON
04/12/2007 08:41:24AM

AS DOC #: A000525251
PAGES: 2 (more)
REC FEES: \$0.00

KATHRYN M. NORBY
COUNTY RECORDER

BY Kathryn M Norby DEPUTY
mw