

CERTIFICATE OF LOCATION OF GOVERNMENT CORNER

I hereby certify that this survey, plan, or report was prepared by me or under my direct supervision and that I am a duly Licensed Land Surveyor under the laws of the State of Minnesota.

Todd R. Johnson

 TODD R. JOHNSON

Date: 12/01/06 License No: 44869
44869

OFFICE OF THE COUNTY RECORDER
 County of CASS

I hereby certify that this document was filed in the Office of the County Recorder at _____ o'clock _____ M. on the _____ day of _____, 20____ A.D.

County Recorder _____
 By: _____, Deputy
 DOCUMENT NO. _____

_____ NORTHEAST _____ Corner of Section 27 _____, Township 139 _____, Range 26 _____, 5TH P.M.

On 7/28/06 found a FOUND RAILROAD SPIKE IN CENTERLINE STATE HIGHWAY NO. 6

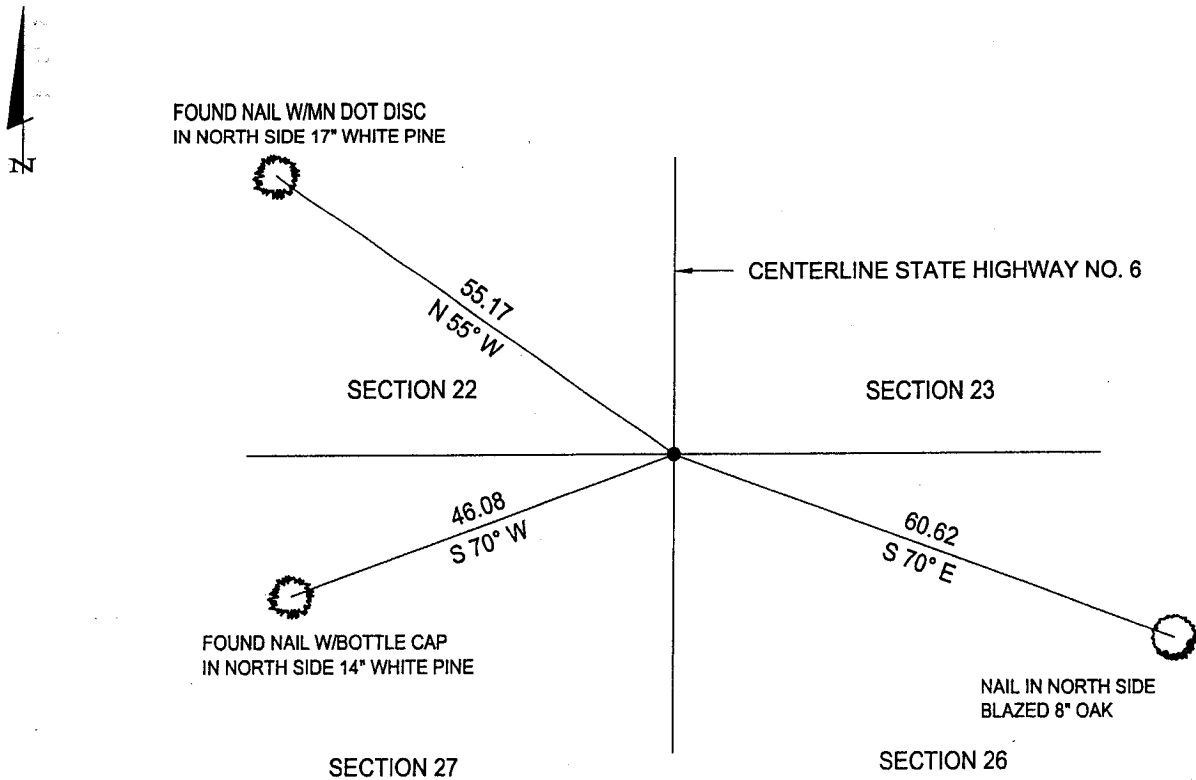
left monument as found,
 lowered monument,
 removed monument (explain)

On _____ placed a _____

SKETCH OF REFERENCE TIES

Corner Index: R 17

Not to Scale



Statement of evidence for this corner position is on the back of this page

STATEMENT OF EVIDENCE

Index No. R - 17

Northeast Corner, Section 27, Township 139
North, Range 26 West, Fifth Principal
Meridian

- 1863 Johnson and Thornton, U.S. Deputy Surveyors originally established this corner position while surveying the interior subdivision lines of Township 139 North, Range 26 West. A wood post was set to mark the corner position with the following witnesses: A 24 inch White Pine, North 24 degrees East, 149 links; A 30 inch White Pine, North 53 degrees West, 35 links; A 32 inch White Pine, South 30 degrees East, 70 links; A 29 inch White Pine, South 22 degrees West, 90 links.

- 1909 County Survey Record Book "A", pages 395 – 397 shows a survey by John Curo. He found the stumps of the original BTS and sets a 5 inch x 5 inch x 40 inch post.

- _____ County Survey Record Book "B", page 90, shows ties to corner by George Ralph as part of road survey, stake Southwest 48.9 feet and stake Southeast 40.5 feet.

- 1927 Plat of IOWANA HEIGHTS, by J.H. Flynn, shows corner.

- 1930 J.H. Flynn, County Surveyor, shows corner on Township Road Survey.

- 1938 Survey by CCC's Book #20, page 40 at Washburn Lake Ranger Station shows corner is West 15 feet from centerline of road.

- 1975 Plat of survey by W. Buckler shows corner found.

- 1995 Certificate of Survey in Section 26 by Landecker and Associates, Inc. shows tie to corner.

- 2006 July 28th, a Landecker and Associates, Inc. survey crew found a railroad spike and accepts the corner as set by others from which the following accessories: An 8 inch Oak, South 70 degrees East, 60.62 feet; A 14 inch White Pine, South 70 degrees West, 46.08 feet; A 17 inch White Pine, North 55 degrees West, 55.17 feet.

A000522183

**OFFICE OF COUNTY RECORDER
CASS COUNTY MINNESOTA**

**CERTIFIED, FILED, AND/OR
RECORDED ON
01/08/2007 03:53:19PM**

**AS DOC #: A000522183
PAGES: 2
REC FEES: \$0.00**

**KATHRYN M. NORBY
COUNTY RECORDER**

BY Kathryn M. Norby
TV DEPUTY