

# CERTIFICATE OF LOCATION OF GOVERNMENT CORNER

I hereby certify that this survey, plan, or report was prepared by me or under my direct supervision and that I am a duly Licensed Land Surveyor under the laws of the State of Minnesota.

*Todd R. Johnson*  
 \_\_\_\_\_  
 TODD R. JOHNSON

Date: 12/01/06 License No: 44869  
 44869

OFFICE OF THE COUNTY RECORDER  
 County of CASS

I hereby certify that this document was filed in the Office of the County Recorder at \_\_\_\_\_ o'clock \_\_\_\_\_ M. on the \_\_\_\_\_ day of \_\_\_\_\_, 20\_\_\_\_ A.D.

County Recorder \_\_\_\_\_

By: \_\_\_\_\_, Deputy  
 DOCUMENT NO. \_\_\_\_\_

NORTH QUARTER Corner of Section 22, Township 139, Range 26, 5TH P.M.

On \_\_\_\_\_ found a \_\_\_\_\_

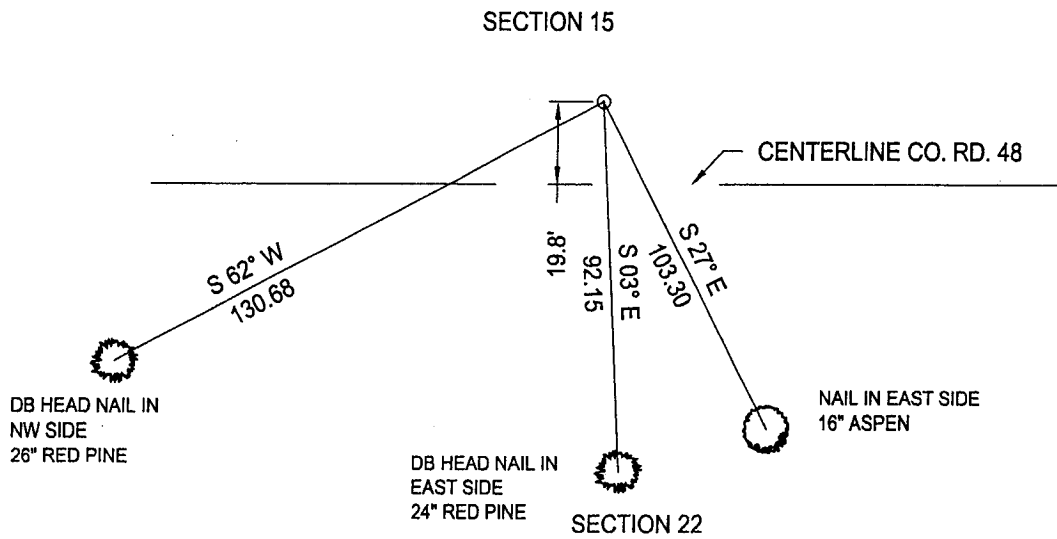
left monument as found,  lowered monument,  removed monument (explain)

On 9/27/06 placed a 3/4" IP WITH PLASTIC CAP RLS #21367

## SKETCH OF REFERENCE TIES

Corner Index: N 15

Not to Scale



Statement of evidence for this corner position is on the back of this page

STATEMENT OF EVIDENCE

Index No. N - 15

North Quarter Corner, Section 22, Township  
139 North, Range 26 West, Fifth Principal  
Meridian

- 1863 Johnson and Thornton, U.S. Deputy Surveyors originally established this corner position while surveying the interior subdivision lines of Township 139 North, Range 26 West. A wood post was set to mark the corner position with the following witnesses: A 24 inch White Pine, North 38 links; A 21 inch White Pine, South 41 degrees West, 29 links.
- 2006 September 27<sup>th</sup>, a Landecker and Associates, Inc. survey crew search for corner and finding nothing, set a 3/4 inch iron pipe at the lost position midway and on line between Northwest and Northeast Corners of Section 22 from which the following accessories: A 16 inch Aspen, South 27 degrees East, 103.30 feet; A 24 inch Red Pine, South 3 degrees East, 92.15 feet; A 26 inch Red Pine, South 62 degrees West, 130.68 feet.

A000522181

OFFICE OF COUNTY RECORDER  
CASS COUNTY MINNESOTA

CERTIFIED, FILED, AND/OR  
RECORDED ON

01/08/2007 03:53:17PM

AS DOC #: A000522181  
PAGES: 2  
REC FEES: \$0.00

KATHRYN M. NORBY  
COUNTY RECORDER

BY Kathryn M. Norby  
DEPUTY