

# CERTIFICATE OF LOCATION OF GOVERNMENT CORNER

I hereby certify that this survey, plan, or report was prepared by me or under my direct supervision and that I am a duly Licensed Land Surveyor under the laws of the State of Minnesota.

*Terry L. Freeman*  
 \_\_\_\_\_  
 TERRY L. FREEMAN

Date: 12/14/06 License No: 21367  
 RLS #21367

OFFICE OF THE COUNTY RECORDER  
 County of CASS

I hereby certify that this document was filed in the Office of the County Recorder at \_\_\_\_\_ o'clock \_\_\_\_\_ M. on the \_\_\_\_\_ day of \_\_\_\_\_, 20\_\_\_\_ A.D.

County Recorder \_\_\_\_\_

By: \_\_\_\_\_, Deputy  
 DOCUMENT NO. \_\_\_\_\_

\_\_\_\_\_ NORTHEAST \_\_\_\_\_ Corner of Section 34 \_\_\_\_\_, Township 142 \_\_\_\_\_, Range 31 \_\_\_\_\_, 5TH P.M.

On 6/30/05 found a 2" GALV. IRON PIPE WITH CAP UP 20"

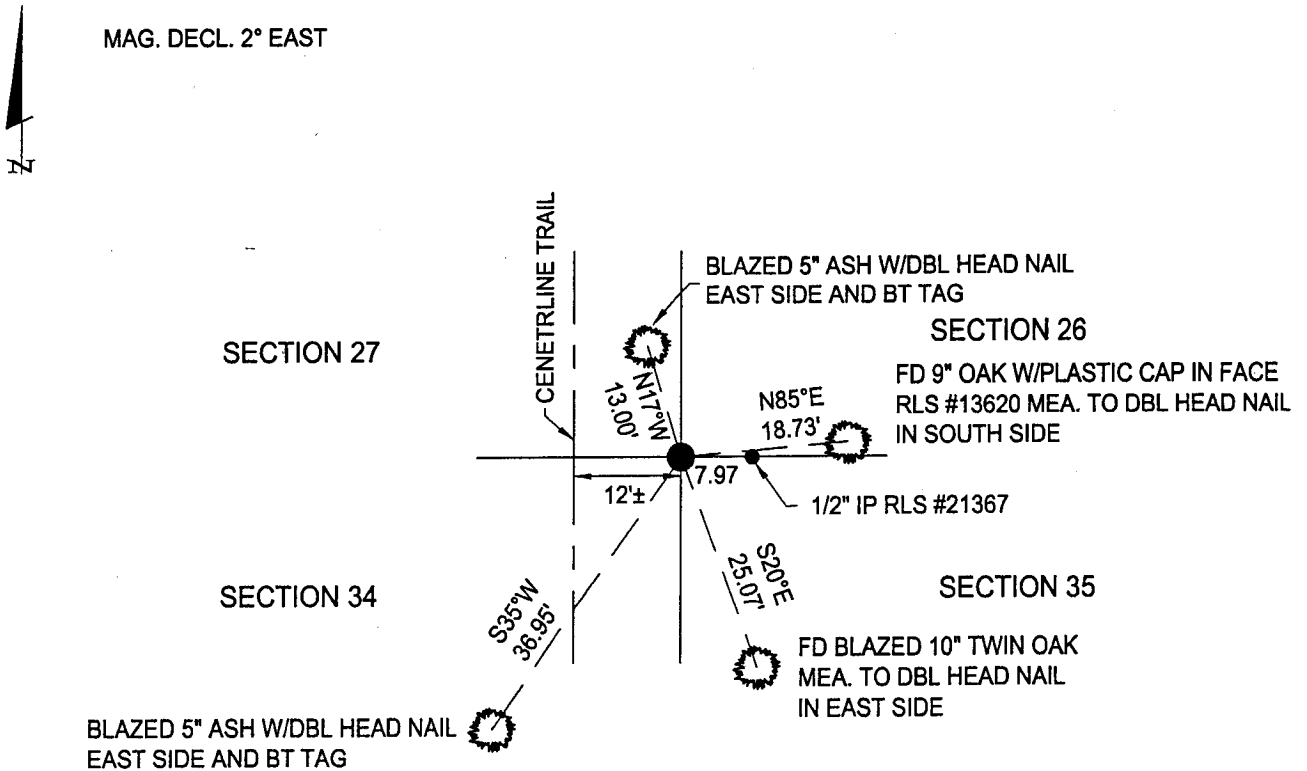
left monument as found,       lowered monument,       removed monument (explain)

On \_\_\_\_\_ placed a \_\_\_\_\_

## SKETCH OF REFERENCE TIES

Corner Index: V17

Not to Scale



Statement of evidence for this corner position is on the back of this page

STATEMENT OF EVIDENCE

Index No. V - 17

Northeast Corner, Section 34, Township 142  
North, Range 31 West, Fifth Principal  
Meridian

- 1873 P.H. Conger, U.S. Deputy Surveyor, originally established this corner position while surveying the interior subdivision lines of Township 142 North, Range 31 West. A wood post was set to mark the corner position with the following witnesses: An 8 inch Jack Pine, North 37 degrees East, 35 links; A 4 inch Red Oak, North 62 degrees West, 54 links.
- 1911 John W. Curo, County Surveyor, County Record Book "A" Pages 338-389 shows he found a 2 inch x 48 inch galvanized iron monument previously set by Todd & Phillips from old government bearing trees, still in evidence.
- 1914 H. Garman, County Deputy Surveyor, on microfilm of Curo notes Roll 11, Book 92, Page 30 shows he recovered monument at position established by John W. Curo.
- 1921 A supplemental survey by General Land Office found a 2 ½ inch galvanized iron pipe at fence corner and alongside set a 2 inch x 36 inch brass cap monument and found the original bearing trees: An 18 inch Pine stump, North 38 ¼ degrees East, 35 links; A 14 inch decayed Oak stump, North 4 degrees West, 54 links and raised a mound of stone west of corner.
- 1940 John W. Curo, County Surveyor, County Record Book D, Pages 242-243 shows he found iron monument as set from government bearing trees and make the following witnesses: A 9 inch Red Oak, North 12 degrees 50 minutes East, 53.75 feet; A 4 inch White Oak, South 6 degrees 12 minutes East, 23.42 feet; A 3 inch White Oak, South 73 degrees 53 minutes West, 28.52 feet; A 6 inch Red Oak, North 54 degrees 08 minutes West, 32.72 feet.
- 1940 Plat of SMOKEYS ADDITION TO WALKER MINNESOTA by Louis Knudsen shows monument found.
- 2002 December, Certificate of Survey by Greg Fordham, RLS#19085, shows monument found.
- 2005 March, Certificate of Survey by Terry Freeman, RLS#21367, shows monument found.
- 2005 June, a Landecker & Associates, Inc. survey crew found a 2 inch galvanized iron pipe with cap up 20 inches and accepts the corner as a perpetuation of the original corner from which the following accessories: A 9 inch Oak with plastic cap in face, North 85 degrees East, 18.73 feet; A Blazed 10 inch Twin Oak, South 20 degrees East, 25.07 feet; A 5 inch Ash, South 35 degrees West, 36.95 feet; A 5 inch Ash, North 17 degrees West, 13.00 feet. No GLO brass monument was found.

A000522177

OFFICE OF COUNTY RECORDER  
CASS COUNTY MINNESOTA

CERTIFIED, FILED, AND/OR  
RECORDED ON  
01/08/2007 03:53:13PM

AS DOC #: A000522177  
PAGES: 2 <sup>3</sup>HV  
REC FEES: \$0.00

KATHRYN M. NORBY  
COUNTY RECORDER

BY Kathryn M. Norby <sup>HV</sup> ~~DEPUTY~~