

A000518645

OFFICE OF COUNTY RECORDER  
CASS COUNTY MINNESOTA

CERTIFIED, FILED, AND/OR  
RECORDED ON  
10/05/2006 08:44:43AM

AS DOC #: A000518645  
PAGES: 2  
REC FEES: \$0.00

KATHRYN M. NORBY  
COUNTY RECORDER

BY Kathryn M Norby  
*(mw)* DEPUTY

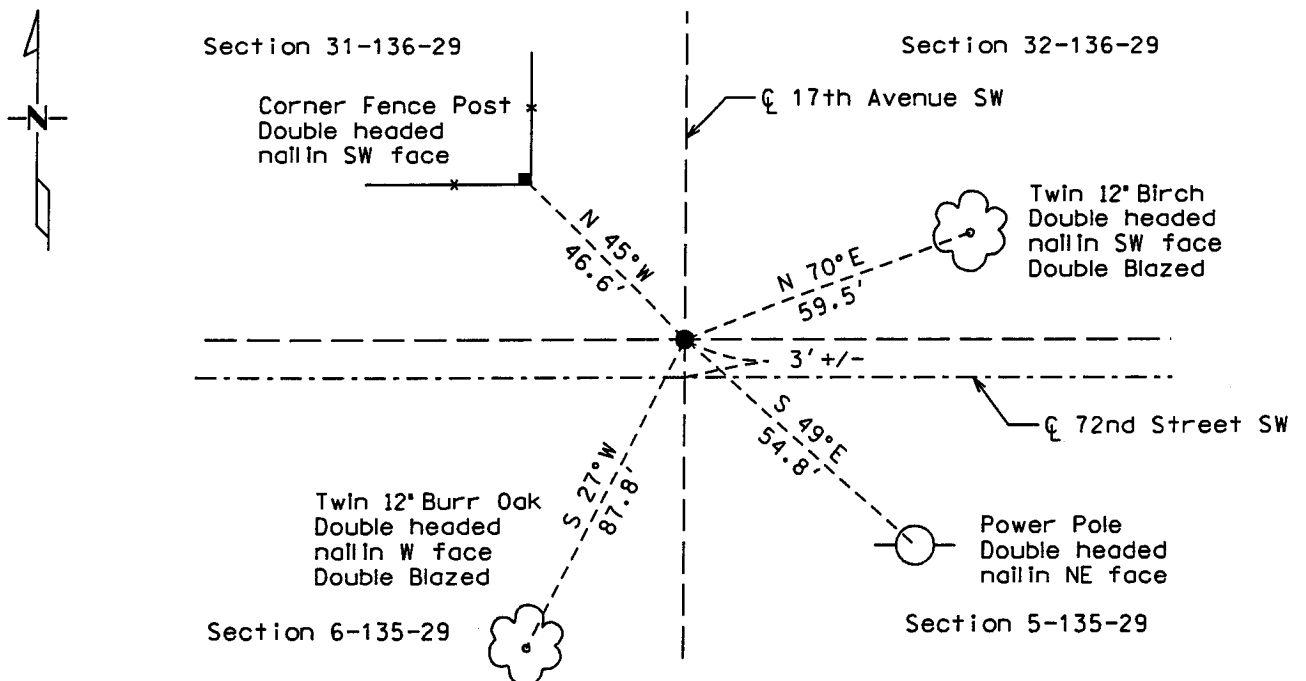
# CERTIFICATE OF LOCATION OF GOVERNMENT CORNER

Northeast Corner of Section 6, Township 135, Range 29

West Principal Meridian, State of Minnesota, County of Cass

At the corner location shown on the sketch:

- On 9/20/06 found a 1/2" pin  
DATE
- left monument as found     lowered monument     removed monument (explain)
- On \_\_\_\_\_ placed a \_\_\_\_\_  
DATE



Statement of evidence for this corner location is on back of this page.

I hereby certify that this document was researched and prepared by me or under my direct supervision.

Signature: *Jewett M Lee*    Date: 9/28/06    License No. 42619

Title:     Land Surveyor     Professional Engineer     County Surveyor     County Engineer

**Statement of Evidence:** Northeast Corner of Section 06, Township 135, Range 29 West, 5<sup>th</sup> Principle Meridian, Cass County Minnesota.

The Original Government Survey was run in 1858 and a post was set to mark the corner. Bearing ties were made to three Pine trees.

In 1909, Mr. John Curo recovered the stake and roots of the bearing tie trees. Bearing ties were made to four Jackpine trees.

In 1916, E.B Horst recovered corner and bearing tie trees. A 2x48 inch iron monument was set to mark the corner.

In 1999, Landecker & Assoc. indicates monument found by Certificate of Survey as evidenced by Cass County Surveyor records.

In March of 2000, the Cass County Surveyor's Office recovered the iron pin. Bearing ties were made to a Red Oak, a Power Pole, a White Oak, and a Corner Fence Post.

In July of 2003, Mr. D. Landecker indicates monument found by Certificate of Survey as evidenced by Cass County Surveyor records.

In June of 2004, Mr. Bruce Grivna indicates monument found by Certificate of Survey as evidenced by Cass County Surveyor records.

In September of 2006, Kramer Leas DeLeo recovered a 1/2" pin and made bearing tree ties to a corner fence post, a power pole, a twin birch, and a twin burr oak. Kramer Leas DeLeo accepts this as the correct location for the corner.

For details and survey analysis contact Kramer Leas DeLeo in Brainerd, Minnesota.