

A000518631

OFFICE OF COUNTY RECORDER
CASS COUNTY MINNESOTA

CERTIFIED, FILED, AND/OR
RECORDED ON
10/05/2006 08:23:08AM

AS DOC #: A000518631
PAGES: 2
REC FEES: \$0.00

KATHRYN M. NORBY
COUNTY RECORDER

BY Kathryn Norby DEPUTY

CERTIFICATE OF LOCATION OF GOVERNMENT CORNER

Northeast Corner of Section 2, Township 133, Range 32

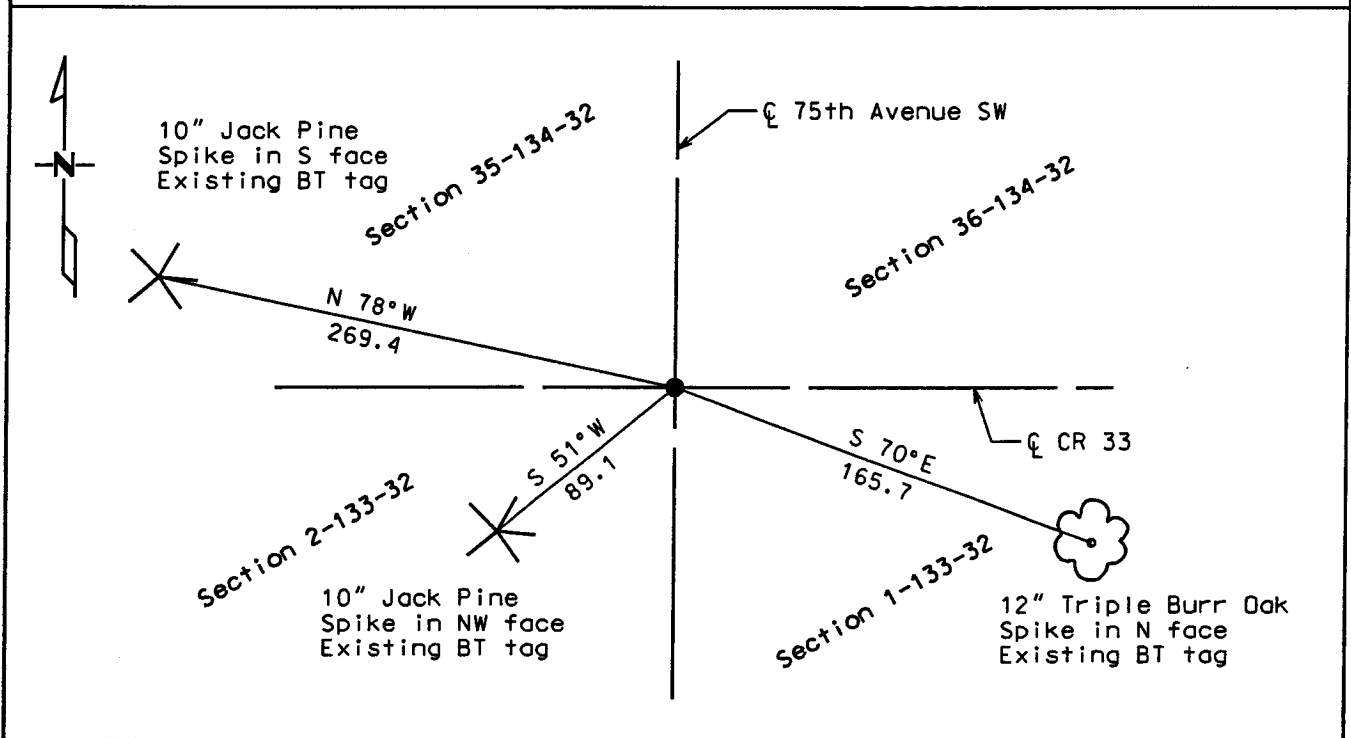
West Principal Meridian, State of Minnesota, County of Cass

At the corner location shown on the sketch:

On 6/20/06 found a Telspar Monument with aluminum cap at the intersection
DATE of County Road #33 and 75th Avenue Southwest.

left monument as found lowered monument removed monument (explain)

On _____ placed a _____
DATE



Statement of evidence for this corner location is on back of this page.

I hereby certify that this document was researched and prepared by me or under my direct supervision.

Signature *James Klum* Date 8-16-2006 License No. 23668

Title: Land Surveyor Professional Engineer County Surveyor County Engineer

Statement of Evidence: Northeast Corner of Section 2, Township 133, Range 32 West, 5th Principle Meridian, Cass County Minnesota.

The Original Government Survey was run in 1858 and a post was set to mark the corner. Bearing ties were made to four Spruce trees.

On June 20, 2006, Kramer Leas DeLeo recovered a Telspar monument. Three existing bearing trees were recovered. Kramer Leas DeLeo accepts this as the correct location for the corner.

For details and survey analysis contact Kramer Leas DeLeo in Brainerd, Minnesota.