

A000516671

OFFICE OF COUNTY RECORDER
CASS COUNTY MINNESOTA

CERTIFIED, FILED, AND/OR
RECORDED ON
08/16/2006 12:39:09PM

AS DOC #: A000516671
PAGES: 2
REC FEES: \$0.00

KATHRYN M. NORBY
COUNTY RECORDER

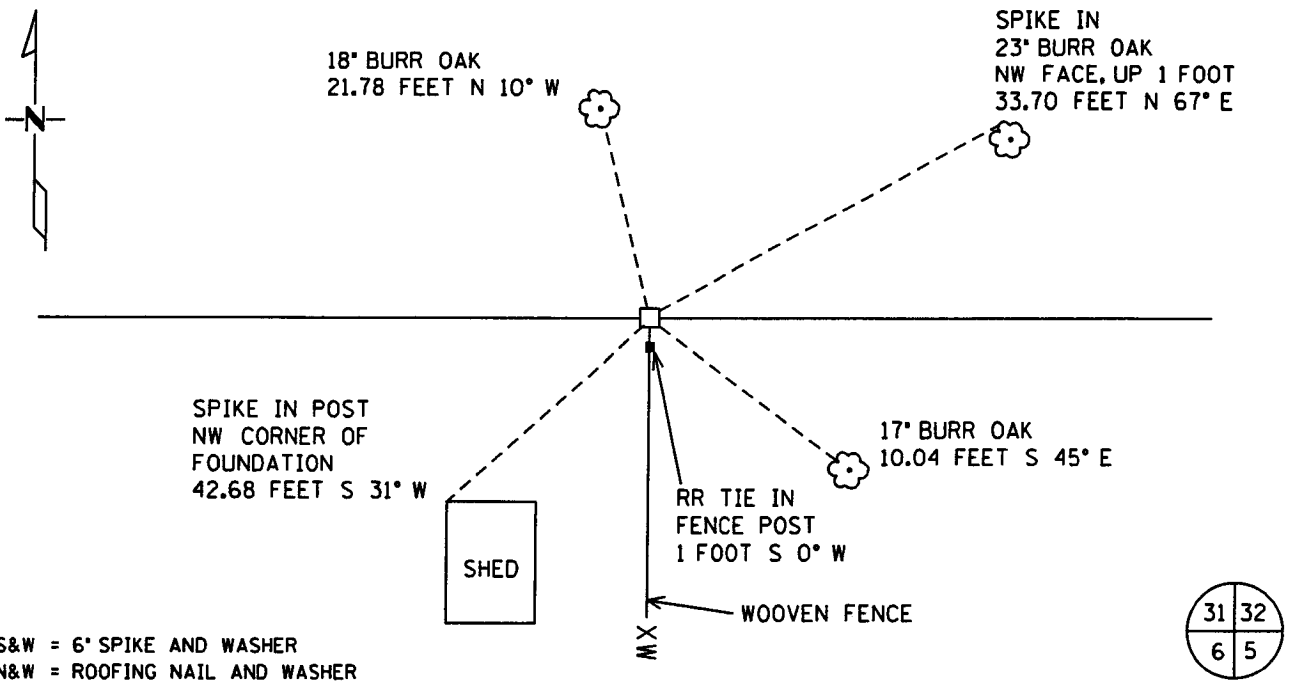
BY Kathryn M. Norby
DEPUTY

CERTIFICATE OF LOCATION OF GOVERNMENT CORNER

Northeast Corner of Section 6, Township 138 N, Range 30 W
5TH Principal Meridian, State of Minnesota, County of Cass

At the corner location shown on the sketch:

- On 3-20-2005 found a 8" x 8" concrete monument.
DATE
- left monument as found lowered monument removed monument (explain)
- On _____ placed a _____
DATE



Statement of evidence for this corner location is on back of this page.

I hereby certify that this document was researched and prepared by me or under my direct supervision.

Signature *Juett W. Lee* Date 3/14/06 License No. 42619
 Title: Land Surveyor Professional Engineer County Surveyor County Engineer

Statement of Evidence: Northeast Corner of Section 6, Township 138, Range 30 West, 5th Principle Meridian, Cass County Minnesota.

The Original Government Survey was run in 1865 and a post was set to mark the corner. Bearing ties were made to a Norway Pine, an Oak, and two Black Pine trees.

In 1906, Mr. John Curo recovered the original post and bearing ties. Mr. Curo set a 8x8x36 inch concrete post.

In 1920, Mr. Ben Clark recovered the concrete post.

In 1924, Cass County Surveyor records indicate that the Minnesota Highway Department recovered the concrete monument.

In 1981, Mr. Al Welle of the Minnesota Department of Transportation recovered the concrete monument. Bearing ties were made to two Burr Oaks and an Elm tree.

In 2006 Kramer Leas DeLeo recovered an 8" by 8" concrete monument and bearing tree ties were made to three oak trees, a shed, and a fence post. Kramer Leas DeLeo accepts this as the correct location for the corner.

For details and survey analysis contact Kramer Leas DeLeo in Brainerd, Minnesota.