

A000516668

OFFICE OF COUNTY RECORDER  
CASS COUNTY MINNESOTA

CERTIFIED, FILED, AND/OR  
RECORDED ON  
08/16/2006 12:39:06PM

AS DOC #: A000516668  
PAGES: 2  
REC FEES: \$0.00

KATHRYN M. NORBY  
COUNTY RECORDER

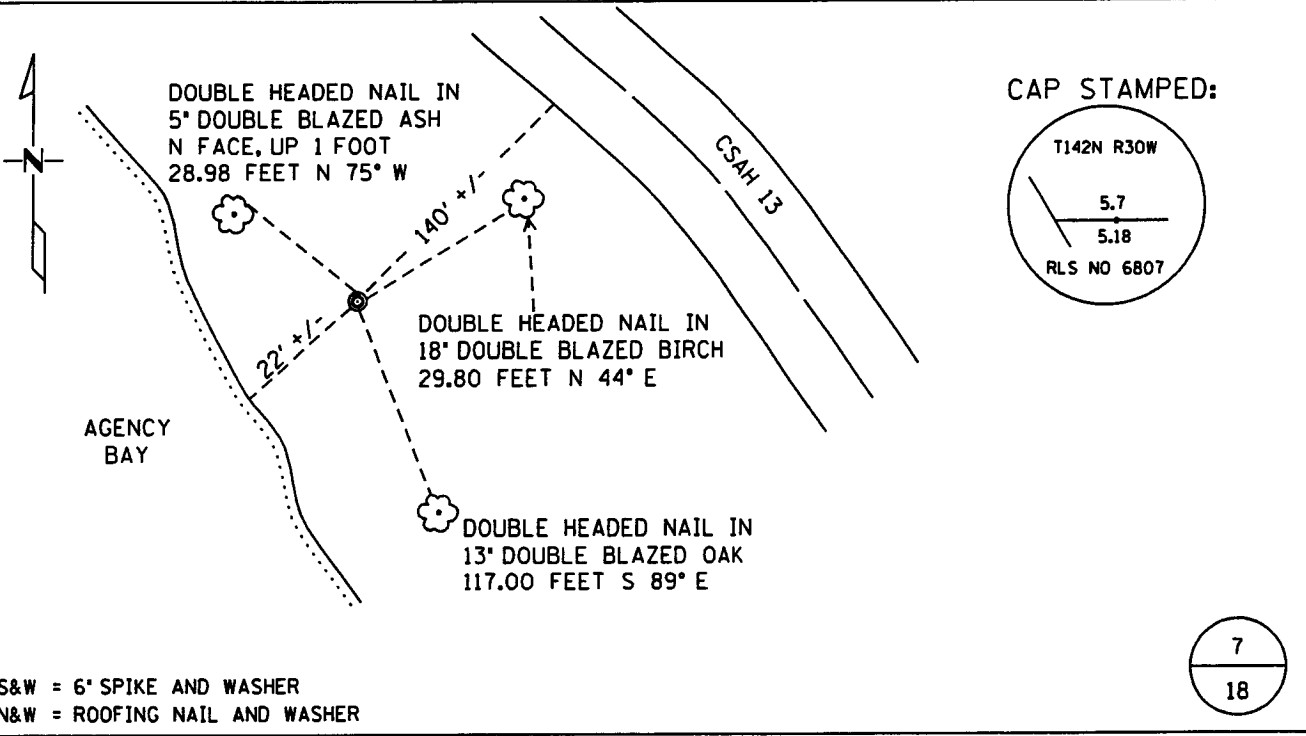
BY Kathryn M. Norby DEPUTY

### CERTIFICATE OF LOCATION OF GOVERNMENT CORNER

Meander Corner on North Line of Section 18, Township 142 N, Range 30 W  
5TH Principal Meridian, State of Minnesota, County of Cass

At the corner location shown on the sketch:

- On 3-20-2005 found a Brass cap monument in concrete.  
DATE
- left monument as found     lowered monument     removed monument (explain)
- On \_\_\_\_\_ placed a \_\_\_\_\_  
DATE



S&W = 6" SPIKE AND WASHER  
N&W = ROOFING NAIL AND WASHER

Statement of evidence for this corner location is on back of this page.

I hereby certify that this document was researched and prepared by me or under my direct supervision.

Signature *Jacobson* Date 3/14/06 License No. 42619  
 Title:  Land Surveyor     Professional Engineer     County Surveyor     County Engineer

**Statement of Evidence:** Meander corner on north line of Section 18, Township 142 North, Range 30 West, Cass County, Minnesota.

The Original Government Survey was run in 1873 and a post was set to mark the corner. Bearing tree ties were made to two oak trees.

In 1918, the GLO set a 1" by 36" iron pipe monument. Bearing tree ties were made to two oak trees.

In 1970, Mr. William Okerman set a 5 ½" by 5 ½" by 60" concrete monument with a brass cap. Bearing tree ties were made to an oak tree, a birch tree, a willow tree, and a cedar post.

In 1999, the Cass County Surveyor's office found inplace brass cap monument set in concrete pillar. Bearing tree ties were made to an ash, a birch, and a red oak.

In 2006, Kramer Leas DeLeo recovered a brass capped monument and bearing tree ties were recovered in an ash, a birch, and oak trees. Kramer Leas DeLeo accepts this as the correct location for the corner.

For details and survey analysis contact Kramer Leas DeLeo in Brainerd, Minnesota.