

A000516660

OFFICE OF COUNTY RECORDER
CASS COUNTY MINNESOTA

CERTIFIED, FILED, AND/OR
RECORDED ON
08/16/2006 12:38:58PM

AS DOC #: A000516660
PAGES: 2
REC FEES: \$0.00

KATHRYN M. NORBY
COUNTY RECORDER

BY Kathryn M. Norby DEPUTY

CERTIFICATE OF LOCATION OF GOVERNMENT CORNER

Northeast Corner of Section 27, Township 140 N, Range 29 W

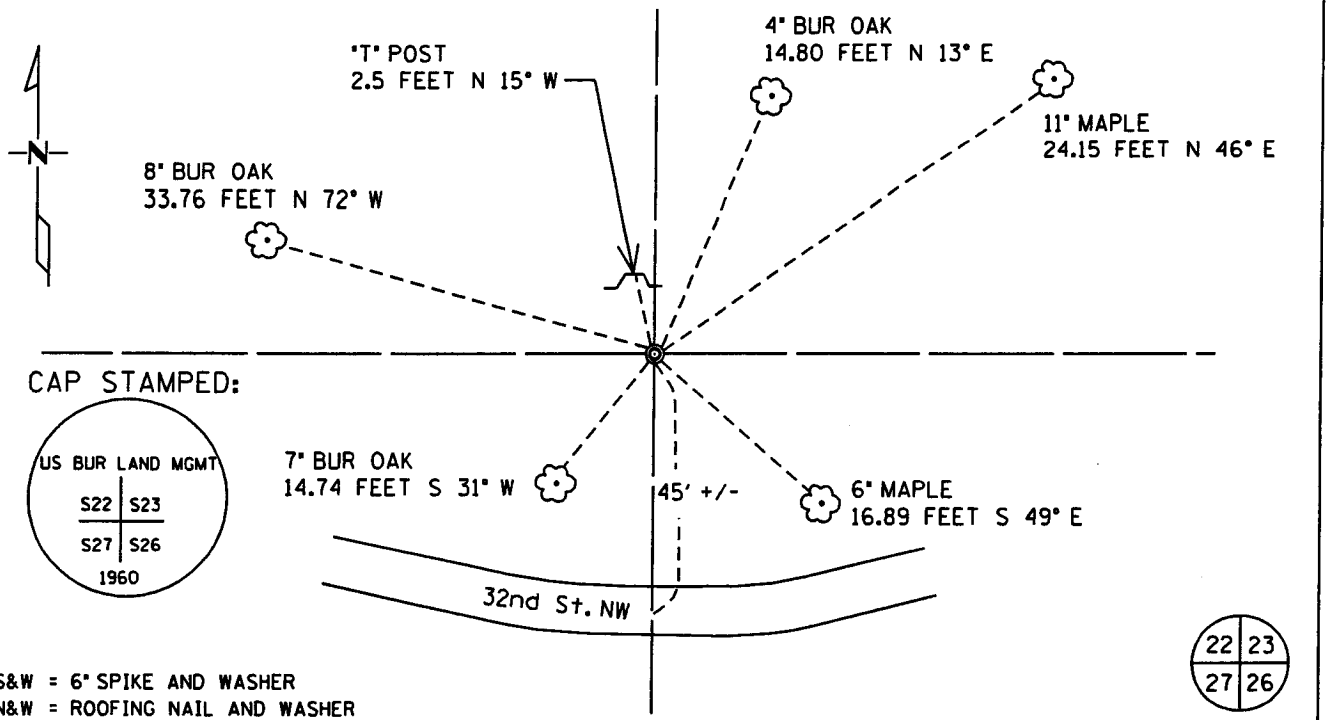
5TH Principal Meridian, State of Minnesota, County of Cass

At the corner location shown on the sketch:

On 3-29-2005 found a BLM 5/8 inch copper rod with a
DATE 1.5 inch bronze cap up 1.0 foot.

left monument as found lowered monument removed monument (explain)

On _____ placed a _____
DATE



Statement of evidence for this corner location is on back of this page.

I hereby certify that this document was researched and prepared by me or under my direct supervision.

Signature [Signature] Date 3/14/06 License No. 42619
Title: Land Surveyor Professional Engineer County Surveyor County Engineer

Statement of Evidence: Northeast Corner of Section 27, Township 140, Range 29 West, 5th Principle Meridian, Cass County Minnesota.

The Original Government Survey was run in 1870 and a post was set to mark the corner. Bearing ties were made to three White Pines and an Ironwood tree.

In 1959, Harold Curo set a 2x30 inch iron monument.

In 1960, BLM recovered the remains of the original bearing tree stump. He set a copper rod monument with a cap reading BLM. Bearing ties were made to a Maple, an Elm, and two Red Oaks.

In 1962, Mr. R.F. Schneider recovered a 2-inch iron pipe monument.

In 1967, Survey Technician T. Freeman and Forrester L. Olson recovered the corners set by H. Curo and by BLM as well as all bearing trees.

In 1981, Mr. Gary Stevenson, utilizes BLM corner and shows H. Curo corner on Certificate of Survey as evidenced by Cass County Surveyor records.

In 1992, Mr. John Walker of the Department of Natural Resources recovered a BLM copper rod with a 1 ½ inch bronze cap. Bearing ties were made to a White Oak, two Maples, and two Black Oaks.

In March of 2003, T. Freeman, RLS #21367, indicates BLM monument found by Certificate of Survey as evidenced in Cass County Surveyor Records.

In July of 2003, Mr. R. Mustonen, RLS #11946, indicates monument found by Certificate of Survey as evidenced in Cass County Surveyor Records.

In Sept. of 2004, T. Freeman, RLS #21367, indicates BLM brass cup monument found by Certificate of Survey as evidenced in Cass County Surveyor Records.

In January of 2004, CCSO recovered the BLM monument.

In January of 2004, Mr. Terry Freeman, RLS #21367, indicates the GLO brass cap monument found by Certificate of Survey as evidenced in Cass County Surveyor Records.

In 2006 Kramer Leas DeLeo recovered a brass capped monument and bearing tree ties were made to three oak trees, two maple trees and a T post. Kramer Leas DeLeo accepts this as the correct location for the corner.

For details and survey analysis contact Kramer Leas DeLeo in Brainerd, Minnesota.