

CERTIFICATE OF LOCATION OF GOVERNMENT CORNER

North Quarter _____ Corner of Section 8 , Township 133 , Range 29
5TH Principal Meridian, State of Minnesota, County of _____ Cass

At the corner location shown on the sketch:

On 12/20/04 found a 1/2" PIPE CAPPED R.L.S. 21367
DATE

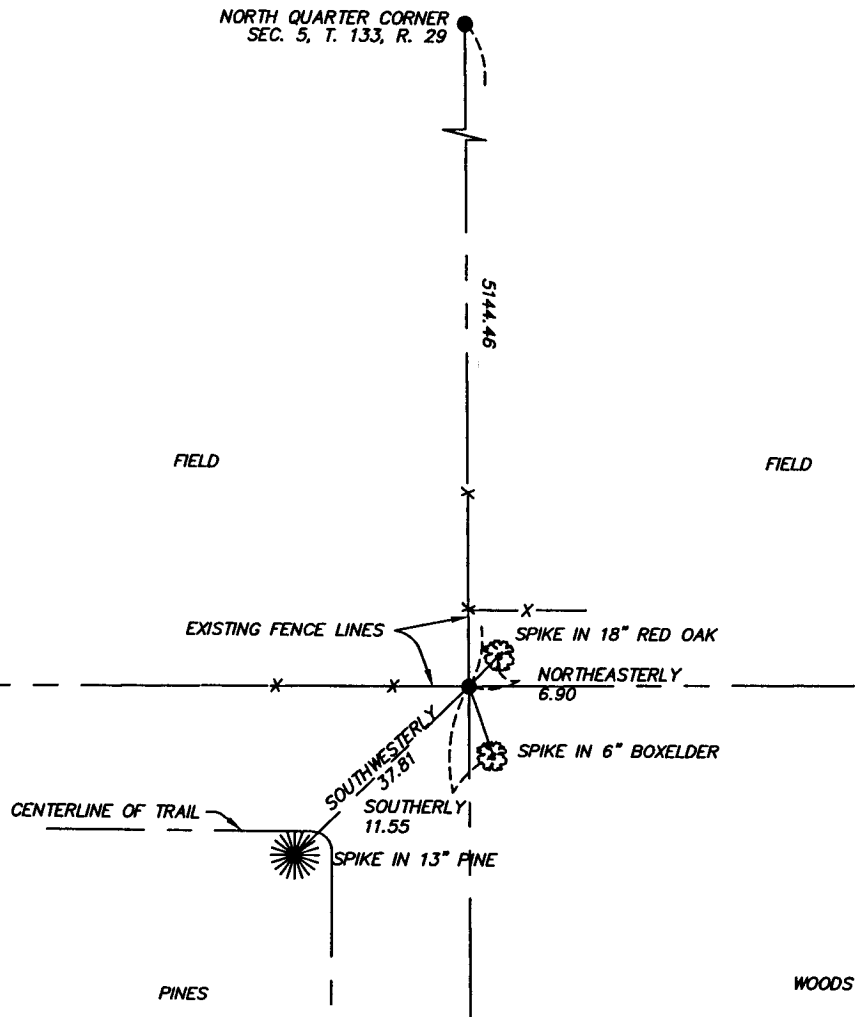
left monument as found lowered monument removed monument (explain)

On _____ placed a _____
DATE

SKETCH OF REFERENCE TIES



NOT TO SCALE



Statement of evidence relative to this corner location is on back of page.

I hereby certify that this document and the data contained herein was prepared by me or under my direct supervision.

Chris Noyes 2/7/06
SIGNATURE DATE

Registration No. 43932

- Land Surveyor Professional Engineer
 County Surveyor County Engineer

OFFICE OF THE COUNTY RECORDER
County of _____

I hereby certify that this document was filed in the Co. Recorders office at _____ M. on the _____ day of _____ A.D., 20____

County Recorder _____

By _____, Deputy

DOCUMENT NO. _____

Statement of Evidence

North Quarter, Section 8, T. 133N. R. 29W., 5th P.M.

1870 – Wood Post Set

1918 – E.B. Hurst found old post, which checked with old Oak B.T.–still standing, he set a 2"x48" I.M. County Book C, Pg. 128

Aug. 2001 – B. Grivna License No. 17253 Certificate of Survey shows Monument found.

12/20/04 – Westwood Professional Services found a 1/2" pipe capped R.L.S. 21367 in place. The ties to which are shown on the front of this Certificate.

A000515689

OFFICE OF COUNTY RECORDER
CASS COUNTY MINNESOTA

CERTIFIED, FILED, AND/OR
RECORDED ON
07/24/2006 09:44:03AM

AS DOC #: A000515689
PAGES: 2
REC FEES: \$0.00

KATHRYN M. NORBY
COUNTY RECORDER

BY Kathryn M. Norby
DEPUTY