

A000515659

OFFICE OF COUNTY RECORDER
CASS COUNTY MINNESOTA

CERTIFIED, FILED, AND/OR
RECORDED ON
07/24/2006 09:43:33AM

AS DOC #: A000515659
PAGES: 2
REC FEES: \$0.00

KATHRYN M. NORBY
COUNTY RECORDER

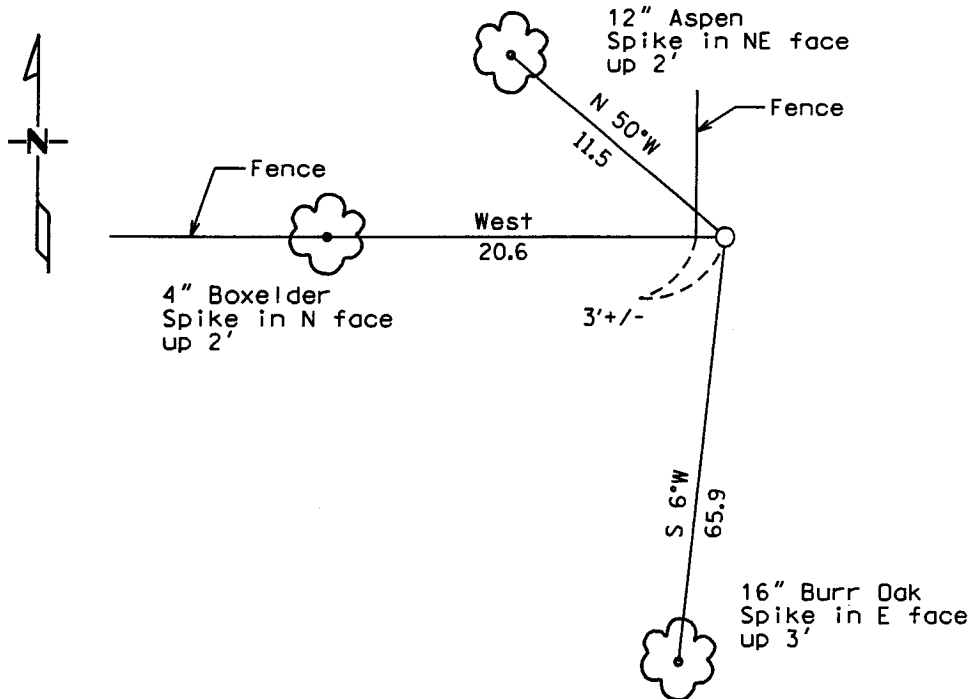
BY Kathryn Norby DEPUTY

CERTIFICATE OF LOCATION OF GOVERNMENT CORNER

East Quarter Corner of Section 15, Township 133, Range 31
West Principal Meridian, State of Minnesota, County of Cass

At the corner location shown on the sketch:

- On _____ found a _____
DATE
- left monument as found lowered monument removed monument (explain)
- On 6/15/06 placed a 1/2" Iron pipe monument capped RLS 42619
DATE



Statement of evidence for this corner location is on back of this page.

I hereby certify that this document was researched and prepared by me or under my direct supervision.

Signature *Jeanette Lee* Date 7/11/06 License No. 42619
 Title: Land Surveyor Professional Engineer County Surveyor County Engineer

Statement of Evidence: East Quarter Corner of Section 15, Township 133, Range 31 West, 5th Principle Meridian, Cass County Minnesota.

The Original Government Survey was run in 1863 and a post was set to mark the corner. Bearing ties were made to two Tamarack trees.

In 2006 Kramer Leas DeLeo set a ½” iron pipe monument capped RLS 42619. Bearing tree ties were made to an aspen, a boxelder and a burr oak. Kramer Leas DeLeo accepts this as the correct location for the corner.

For details and survey analysis contact Kramer Leas DeLeo in Brainerd, Minnesota.