

# CERTIFICATE OF LOCATION OF GOVERNMENT CORNER

NORTHEAST Corner of Section 8, Township 140 N, Range 28 W, 5<sup>th</sup> P.M.

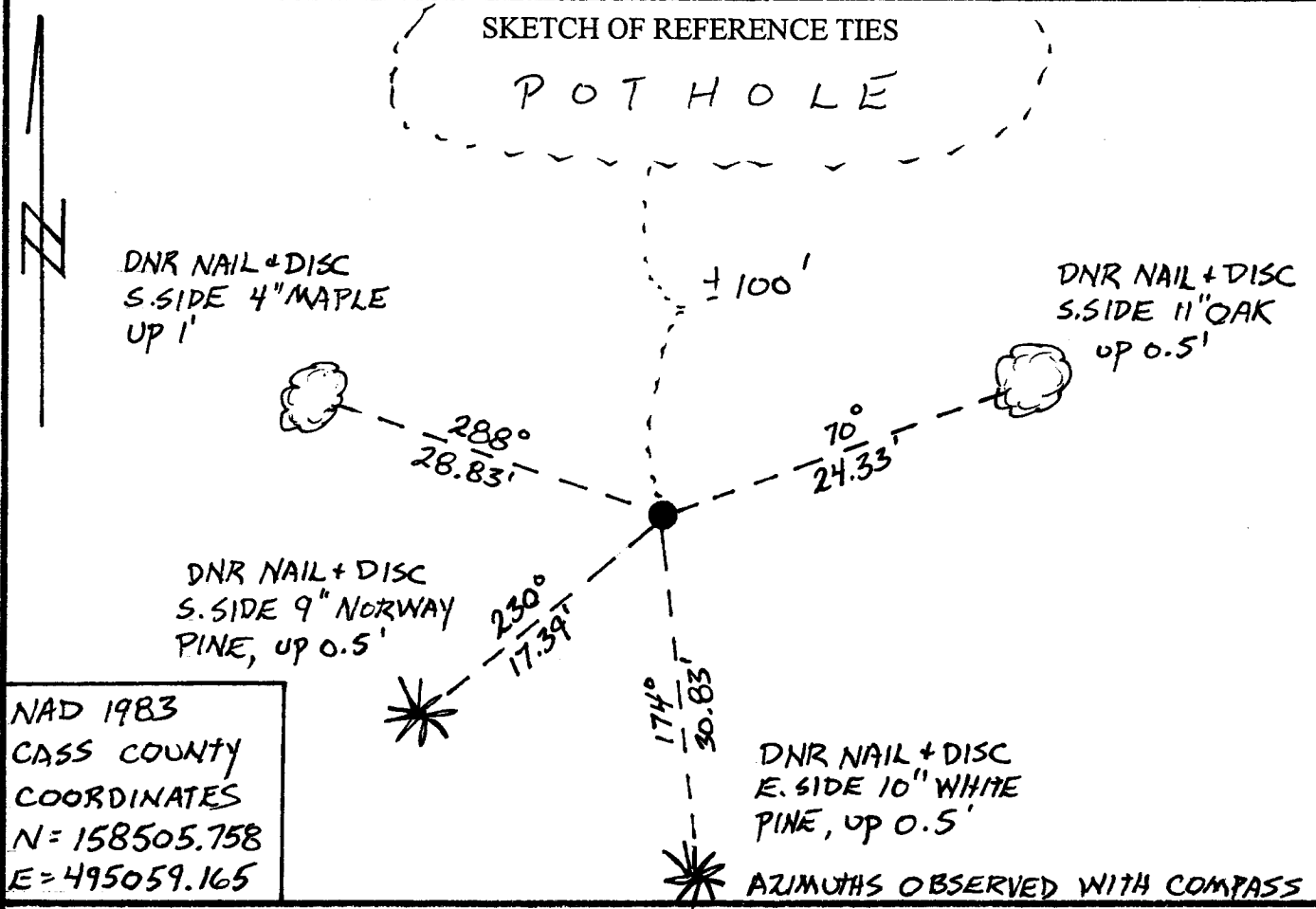
STATE OF MINNESOTA, County of CASS

At the corner location shown on the sketch:

On 4-25-05 found a 1/2" x 14" CARRIAGE BOLT AND REMAINS OF  
Date GLO BEARING TREES  
 left monument as found,  lowered monument  removed monument (explain)

On 4-25-05 placed a 3/4" x 24" REBAR WITH PLASTIC CAP STAMPED  
Date "MN DNR LS 17005", up 0.1

SKETCH OF REFERENCE TIES



NAD 1983  
CASS COUNTY  
COORDINATES  
N = 158505.758  
E = 495059.165

AZIMUTHS OBSERVED WITH COMPASS

Statement of evidence relative to this corner is on the back of this page

I hereby certify that this document and the data contained herein was prepared by me or under my direct supervision.

Lowell R. Pommerene 8-15-05  
Date

Lowell R. Pommerene  
Registration No. 17005  
 Licensed Land Surveyor

OFFICE OF THE COUNTY RECORDER  
County of \_\_\_\_\_

I hereby certify that this document was filed in the Co. Recorders Office at \_\_\_\_ M. on the \_\_\_\_ day of \_\_\_\_ A.D., 20\_\_

County Recorder \_\_\_\_\_  
By \_\_\_\_\_, Deputy  
DOCUMENT NO. \_\_\_\_\_

## Northeast Corner Section 8, Township 140 North, Range 28 West

The DNR Land Survey Unit contacted the following office for survey information on this corner:

MN Secretary of State  
Cass County Surveyor's Office

- 1870 The U.S. General Land Office (GLO) field notes, on file in the Secretary of State's Office, describe this corner as a set post from which:
- a W. Pine 24" dia bears South 70° West 60 links
  - a Dry Pine 18" dia bears North 60° East 8 links
  - a W. Pine 24" dia bears South 45° East 110 links
  - no other tree convenient
- 1941 The Cass County Land Corner Record, on file in the County Surveyor's Office, shows subsequent corner restoration. The CCC's Book 15, page 46 of Washburn Lake, show this corner was a found iron pipe being 153 feet east of and 5277 feet from the Southeast Corner Section 8.
- 1976 A survey by Dean Anderson, RLS #3091, shows a subdivision of Section 9. At this corner is shown a found 1 ½" iron pipe. The north line of Section 9 is shown to measure:
- 5236.64 feet from the northeast corner.
- Apparently Robert Schneider RLS #5740 wrote to Dean Anderson and questioned his north line of Section 9. A letter to Mr. Schneider, dated March 23, 1976, has a discussion concerning the length of the north line of Section 9 and this corner location. The letter relates a John Stark survey that has the north line measuring 5419 feet, northeast corner of Section 9 being the same for both surveys. This would move the northwest corner of Section 9 about 183 feet west. Mr. Anderson does not agree with this and uses the found iron pipe. Anderson survey shows an extreme bearing difference from the west quarter corner to this northwest corner, as opposed to the other north-south section lines on his survey.
- 2005 April, the DNR Land Survey Unit conducted a search for this corner and found the iron pipe from Dean Anderson's survey. The iron pipe was found to measure:
- 5482.98 feet from the northeast corner Section 7
  - 2649.07 feet from the east quarter corner Section 5
- Using the John Stark survey another search was made about 180 feet west of the iron pipe. Found a Pine Stump with axes marks visible, believed to be the GLO bearing tree to the southeast. Using the GLO bearing and distance, a 1" x 14" carriage bolt was found. Additional searching yielded the Pine Stumps to the northeast and southwest of the corner that agree with the GLO bearing and distance to the found bolt. The carriage bolt was found to measure:
- 5309.22 feet from the northeast corner Section 7
  - 2628.67 feet from the east quarter corner Section 5
  - 174.93 feet west of Dean Anderson's iron pipe

Analysis of the available information led the DNR Land Survey Unit to conclude that the found carriage bolt marks the location of the corner. All three found Pine Stumps agree with GLO bearing and distance to the carriage bolt, thereby making them the remains of the GLO bearing trees. This position would also agree with John Stark's distance along the north line of Section 9, possibly making the carriage bolt as John Stark's corner also.

A000509714

OFFICE OF COUNTY RECORDER  
CASS COUNTY MINNESOTA

CERTIFIED, FILED, AND/OR  
RECORDED ON  
02/08/2006 11:46:53AM

AS DOC #: A000509714  
PAGES: 3  
REC FEES: \$0.00

KATHRYN M. NORBY  
COUNTY RECORDER

BY Kathryn M. Norby  
Hv DEPUTY