

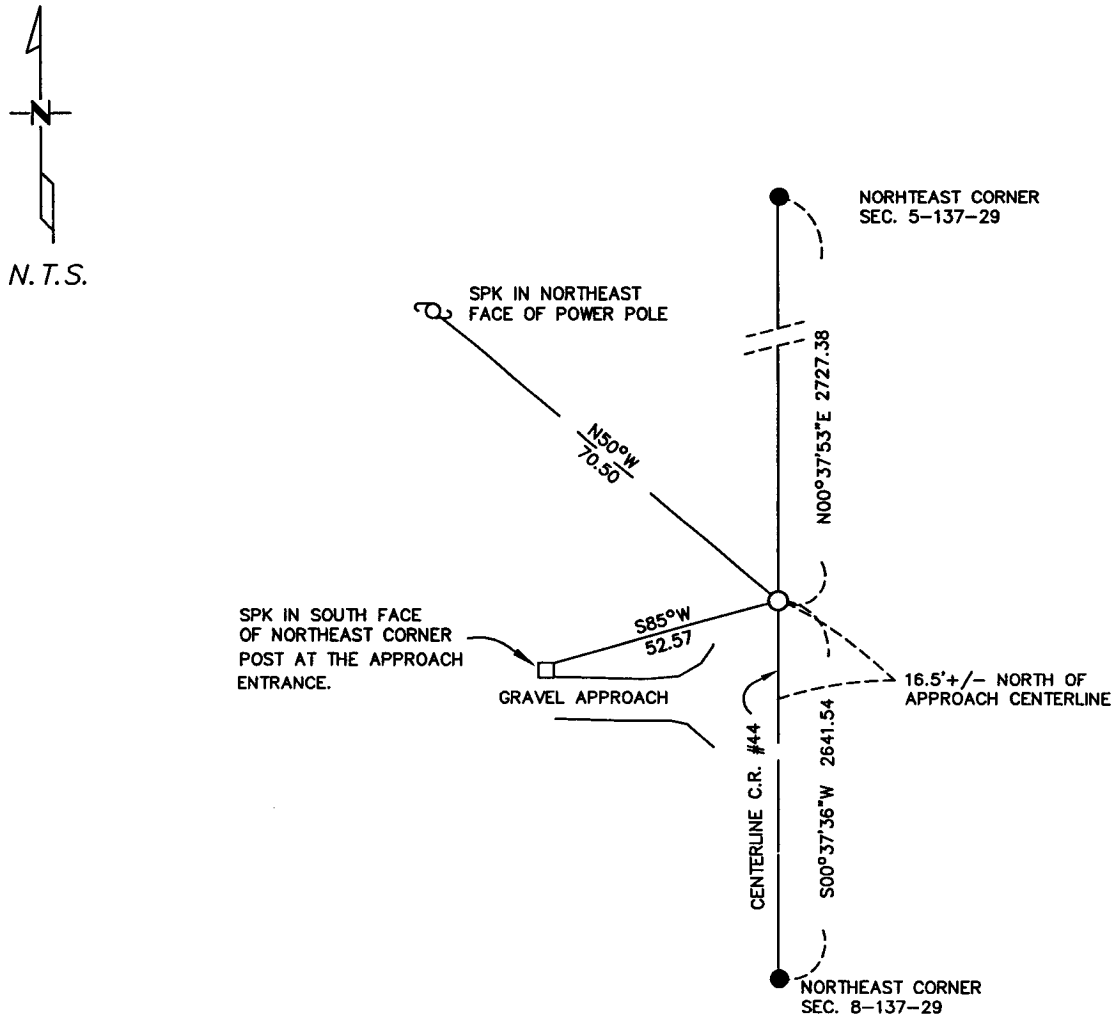
CERTIFICATE OF LOCATION OF GOVERNMENT CORNER

E 1/4 Corner of Section 5, Township 137, Range 29
5TH Principal Meridian, State of Minnesota, County of Cass

At the corner location shown on the sketch:

- On _____ found a _____
DATE
- left monument as found lowered monument removed monument (explain)
- On 10-20-04 placed a P.K. NAIL 1'+/- WEST OF CENTERLINE
DATE

SKETCH OF REFERENCE TIES



Statement of evidence relative to this corner location is on back of page.

I hereby certify that this document and the data contained herein was prepared by me or under my direct supervision.

Bruce Shi 5/27/05
SIGNATURE DATE

Registration No. 17253

- Land Surveyor Professional Engineer
- County Surveyor County Engineer

OFFICE OF THE COUNTY RECORDER
County of _____

I hereby certify that this document was filed in the Co. Recorders office at _____ M. on the _____ day of _____ A.D., 20____

County Recorder _____
By _____, Deputy

DOCUMENT NO. _____

Statement of Evidence

E 1/4, Section 5, T. 137, R. 29 5th P.M.

1865- Post Set

1904- W.H. Hallett, in a Township Road Order indicates a 1/4 Stake.

1983- Freeman and Marcum found a 1" Iron Pilpe in Centerline of Road

10/20/04 - Westwood Professional Services set a P.K. Nail based on Landecker and Associates Inc. postion shown on their section subdivision, the ties to which are shown on the front of this certificate.

A000509704

OFFICE OF COUNTY RECORDER
CASS COUNTY MINNESOTA

CERTIFIED, FILED, AND/OR
RECORDED ON
02/08/2006 11:46:43AM

AS DOC #: A000509704
PAGES: 2
REC FEES: \$0.00

KATHRYN H. NORBY
COUNTY RECORDER

BY Kathryn Norby DEPUTY
HW